

QUEENSLAND RECONSTRUCTION AUTHORITY

Monthly Report

June 2015

Document details:

Security classification	Public
Date of review of security classification	June 2015
Authority	Queensland Reconstruction Authority
Author	Chief Executive Officer
Document status	Final
Version	1.0

Contact for Enquiries:

All enquiries regarding this document should be directed to:

Queensland Reconstruction Authority

*Phone the call centre - **1800 110 841***

Mailing Address

Queensland Reconstruction Authority

PO Box 15428

City East Q 4002

Alternatively, contact the Queensland Reconstruction Authority by emailing info@qldra.org.au

Licence

This material is licensed under a [Creative Commons - Attribution 3.0 Australia licence](#).



The Queensland Reconstruction Authority requests attribution in the following manner:

© The State of Queensland (Queensland Reconstruction Authority) 2011-2014

Information security

This document has been classified using the [Queensland Government Information Security Classification Framework \(QGISC\)](#) as PUBLIC and will be managed according to the requirements of the QGISC.

Message from the Chief Executive Officer

Major General Richard Wilson AO (Ret'd)
Chairman
Queensland Reconstruction Authority

Dear Major General Wilson

It is with pleasure that I present the June 2015 Monthly Report – the 52nd report to the Board of the Queensland Reconstruction Authority (the Authority).

The Authority was established under the *Queensland Reconstruction Authority Act 2011* (the Act) following the unprecedented natural disasters which struck Queensland over the summer months of 2010-11. The role of the Authority has since been extended to cover historical and continuing disaster events in Queensland. The Authority is charged with managing and coordinating the Government's program of infrastructure renewal and recovery within disaster-affected communities, with a focus on working with our State and local government partners to deliver best practice expenditure of public reconstruction funds.

On 3 June 2015, a Bill was passed by Parliament to extend the Authority beyond 30 June 2015 to enable the Authority to continue the work of helping communities effectively and efficiently recover from the impacts of natural disasters that have devastated Queensland over recent times.

The June report provides an update on the progress of recovery. With the next milestone nearing for completion of eligible works for the 2013 events, the Authority is focused on delivery of the remaining program of works from Tropical Cyclone Oswald and other events of 2013 by 30 June 2015 and the progression of the 2014 and 2015 events through the damage assessment, submission preparation and approval and delivery phases.

Following completion of the February 2015 review, the Authority is managing a total program of works for events from 2009 through to 2015 with an estimated total cost of \$13.57 billion.

As at 31 May 2015:

- a cumulative value of \$18.32 billion in submissions have been received by the Authority to 31 May 2015
- a cumulative total of \$18.15 billion has been processed by the Authority to 31 May 2015
- a cumulative value of \$12.43 billion of the revised \$13.57 billion works program (2009 to 2015) has been reported to the Authority as being in progress or delivered by delivery agents as at 30 April 2015.

Since the last report, the Commonwealth has also agreed to cost share Category D packages worth \$27.8 million in relation to the 2015 events, including \$20 million Betterment funding to restore or replace essential public assets damaged in the 2015 events to a more disaster resilient standard.

The June report also profiles completion of the betterment programs for both Rockhampton Regional Council and Somerset Regional Council. Rockhampton's Upper Ulam Road project was the last of Council's betterment projects to be completed but has already delivered benefits to the community by withstanding Tropical Cyclone Marcia whilst under construction. Somerset Regional Council has also marked completion of its 2013 program of works with a ceremony to open 11 bridges and crossings with some funded under Betterment and replaced with new, more flood-resilient concrete bridges .

The report also highlights the opening of two more ferry terminals in Brisbane during May, rebuilt with more resilient, permanent structures with special Category D NDRRA funding following the 2011 floods, and DTMR's completion of restoration works on a popular tourist route in Far North Queensland which was damaged by Tropical Cyclone Ita in 2014.

The June report also tracks the progress of recovery by the functional recovery groups established under the Severe Tropical Cyclone Marcia Recovery Plan (the Recovery Plan). The Recovery Plan was adopted following Severe Tropical Cyclone Marcia to guide the activities which will help ensure that impacted communities recover as quickly as possible from the disaster.

I commend the report to you and recommend its release to the Minister and the public pursuant to Section 41 of the *Queensland Reconstruction Authority Act 2011*.

Yours sincerely



Frankie Carroll
Chief Executive Officer
Queensland Reconstruction Authority

Contents

1.0 Introduction	1
1.1 Background	2
1.2 Purpose	2
1.3 Timing	2
2.0 Disaster Assistance	3
2.1 Queensland Disaster Assistance Framework	4
2.2 Events and relief measures managed by the Authority	5
2.3 Additional assistance measures	7
3.0 Program Status	8
3.1 Recent developments	9
3.2 Combined program status	9
3.3 Program of works expenditure	9
3.4 State-wide pipeline of works	10
3.5 State-controlled roads and highways	11
3.6 Betterment fund status	11
4.0 Progress Reports	12
4.1 Severe Tropical Cyclone Marcia Recovery Plan	13
4.2 Program spotlights	15
5.0 Communications	19
5.1 Communicating progress	20
5.2 Media reports	21
<u>Appendices</u>	
Appendix A: Local Government Areas by Region	23

Section one:
Introduction



1.0 Introduction

1.1 Background

Queensland has been struck by a series of unprecedented natural disasters in recent years. Between November 2010 and April 2011, extensive flooding caused by periods of extremely heavy rainfall and destruction caused by a number of storm cells including Cyclones Tasha, Anthony and Severe Tropical Cyclone Yasi and subsequent monsoonal flooding, resulted in all of Queensland being declared as disaster affected. Since 2011, the State has also repeatedly faced additional large scale natural disasters including a series of events through 2012, Tropical Cyclone Oswald in late January 2013, Tropical Cyclone Ita and other events in 2014 and most recently Tropical Cyclone Marcia in 2015.

The Queensland Reconstruction Authority (the Authority) was established on 21 February 2011 under the *Queensland Reconstruction Act 2011* (the Act) to manage and coordinate the recovery effort for the disaster events of the summer of 2010-11. The Authority also administers the rebuilding program for Natural Disaster Relief and Recovery Arrangements (NDRRA) activated disaster events and works closely with local governments to ensure the effective recovery of Queensland communities.

The Act as passed included a sunset clause to wrap up the Authority after two years, recognising that the focus of the Authority was to fast-track rebuilding efforts and get Queensland back on to a business-as-usual footing as quickly as possible. The Act was extended in 2012 and again in 2013 until 30 June 2015 to ensure the Authority could continue the critical work of helping communities effectively and efficiently recover from the impacts of natural disasters that continued to devastate Queensland.

In June 2015, the Authority's sunset clause of 30 June 2015 was repealed as part of the *Local Government and Other Legislation Amendment Bill 2015* enabling the Authority to continue the work of helping communities effectively and efficiently recover from the impacts of natural disasters that have devastated Queensland over recent times.

1.2 Purpose

The Authority's mission is **to reconnect, rebuild and improve Queensland communities and its economy.**

The Authority is charged with managing and coordinating the Government's program of infrastructure renewal and recovery within disaster-affected communities, with a focus on working with our State and local government partners to deliver best practice expenditure of public reconstruction funds.

The Authority operates with reference to recovery and reconstruction plans established by the State in response to the 2011 disaster events, Tropical Cyclone Oswald in 2013, Severe Tropical Cyclone Ita in 2014 and most recently Severe Tropical Cyclone Marcia in 2015. An overview of the Tropical Cyclone Marcia Recovery Plan and status of recovery is provided in Section 4.1.

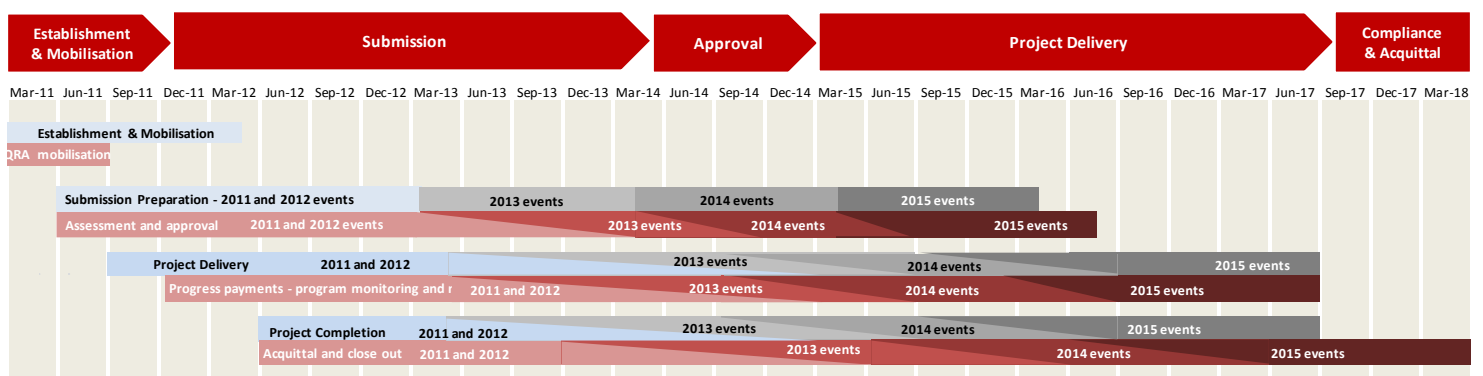
1.3 Timing

On 31 March 2015, the Authority submitted the audited 2013-14 claim for NDRRA financial assistance to the Commonwealth. The claim acquitted more than \$5.7 billion of eligible expenditure and was finalised following the close out and audit of the massive volume of works completed prior to 30 June 2014 on the 2011, 2012, 2013 and 2014 events.

With the next milestone nearing for completion of eligible works for the 2013 events, the Authority is focused on delivery of the remaining program of works from Tropical Cyclone Oswald and other events of 2013 by 30 June 2015 and the progression of the 2014 and 2015 events through the damage assessment, submission preparation and approval and delivery phases.

Following Tropical Cyclone Marcia and other 2015 disaster events that have recently occurred, the Authority is supporting the State's response to the events and is also liaising with relevant delivery agents to assist with damage assessments and progress towards recovery and reconstruction.

With the 2015 disaster season still underway, the Authority remains prepared to respond should additional disasters strike.



Section two:
Disaster Assistance

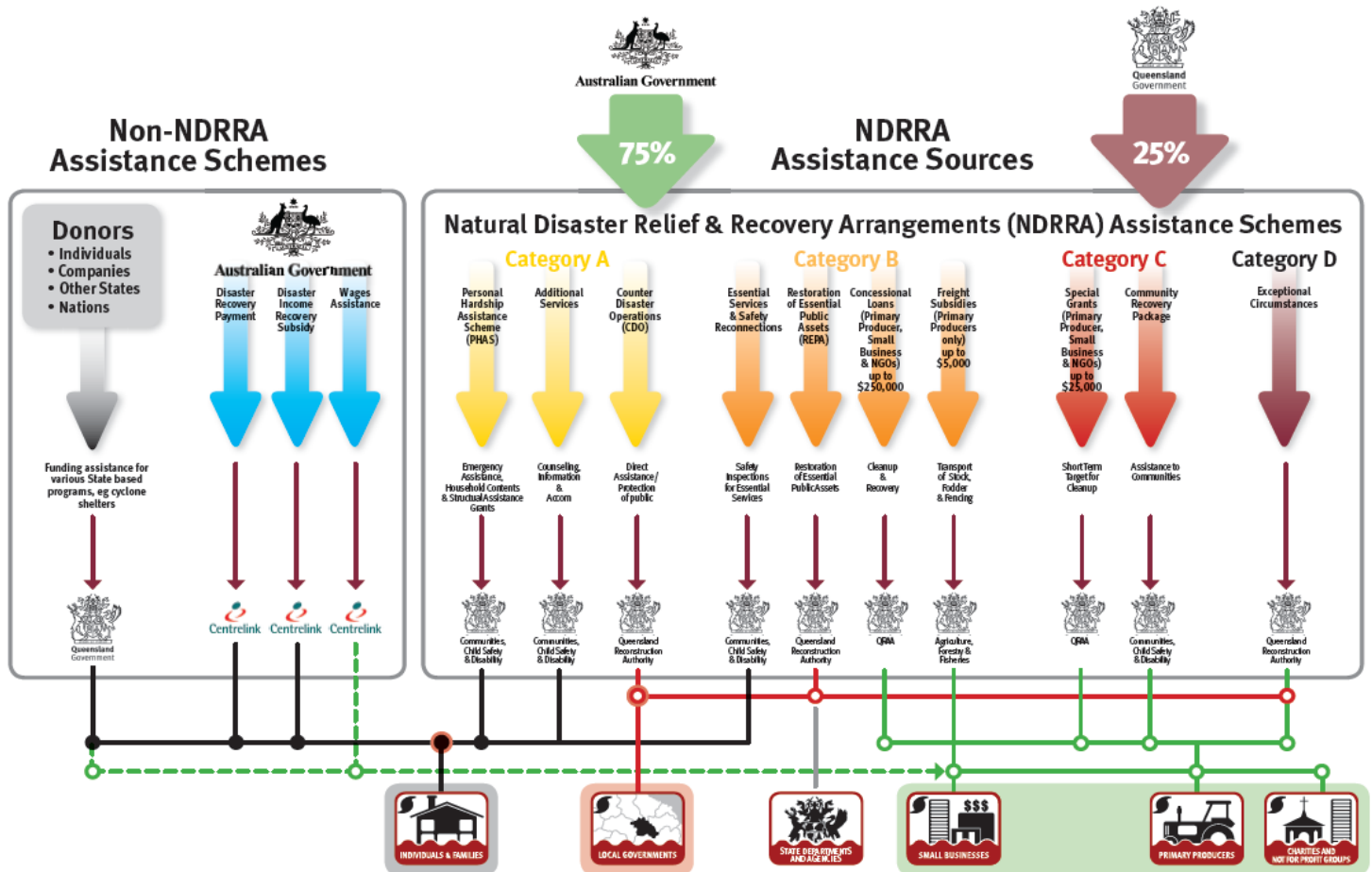


2.0 Disaster Assistance

2.1 Queensland Disaster Assistance Framework

The available Queensland Disaster Assistance schemes are separated between NDRRA (jointly funded by the Commonwealth and State governments) and Non-NDRRA funding schemes. The diagram below indicates the different elements of assistance available and how each element operates.

Figure 2.1.1 Queensland Disaster Assistance Framework



Whilst elements of the assistance schemes are delivered by other State agencies, all of the NDRRA assistance sources (and elements of the non-NDRRA assistance schemes) are administered by the Authority for historical and continuing disaster events in Queensland.

Disaster events managed by the Authority

The list of the activated disaster events managed by the Authority are set out in **Section 2.2** and can also be found on www.disaster.qld.gov.au.

The maps opposite show the LGAs activated for relief measures under NDRRA for each event period under the Queensland Disaster Assistance Framework.

This report includes references to event periods described as follows:

- **2015 events:** Activated disaster events managed by the Authority which occurred in the financial year ended **30 June 2015**
- **2014 events:** Activated disaster events managed by the Authority which occurred in the financial year ended **30 June 2014**
- **2013 events:** Activated disaster events managed by the Authority which occurred in the financial year ended **30 June 2013**, including Tropical Cyclone Oswald and associated rainfall and flooding (January 2013)
- **2012 events:** Activated disaster events managed by the Authority which occurred in the financial year ended **30 June 2012**
- **2011 events:** Activated disaster events managed by the Authority which occurred in the financial year ended **30 June 2011**, including Tropical Cyclone Yasi and Queensland flooding (November 2010 to February 2011)
- **2009-2010 events:** Activated disaster events managed by the Authority which occurred prior to 30 June 2010
- **Combined Program:** relates to all the activated disaster event programs managed by the Authority.

2.2 Events and relief measures managed by the Authority

The Authority has responsibility to administer NDRRA relief measures for historical and continuing disaster events in Queensland. The Authority currently manages and coordinates the infrastructure reconstruction and recovery for 34 disaster events activated for NDRRA relief measures since the Authority's establishment in February 2011 and the remaining program of works for an additional 16 disaster events which occurred prior to the Authority's establishment.

The maps opposite show the LGAs activated for relief measures under NDRRA for the 2011 to 2015 event periods managed by the Authority under the Queensland Disaster Assistance Framework.

Since the last report, additional NDRRA relief measures have been activated for *Severe Tropical Cyclone Marcia and South East Queensland Trough - 19 to 22 February 2015*.

2015 events

- Tropical Cyclone Nathan and associated rainfall and flooding, 11 - 15 March 2015
- Severe Tropical Cyclone Marcia and South East Queensland Trough - 19 to 22 February 2015
- North Queensland Severe Weather and Flooding - 8 to 15 February 2015
- Central Eastern Queensland Heavy Rainfall and Flooding - 21 to 29 January 2015
- Western Queensland Heavy Rainfall and Flooding - 5 to 18 January 2015
- Central Queensland Heavy Rainfall and Flooding - 8 to 14 December 2014
- Brisbane Severe Thunderstorm - 27 November 2014.

2014 events

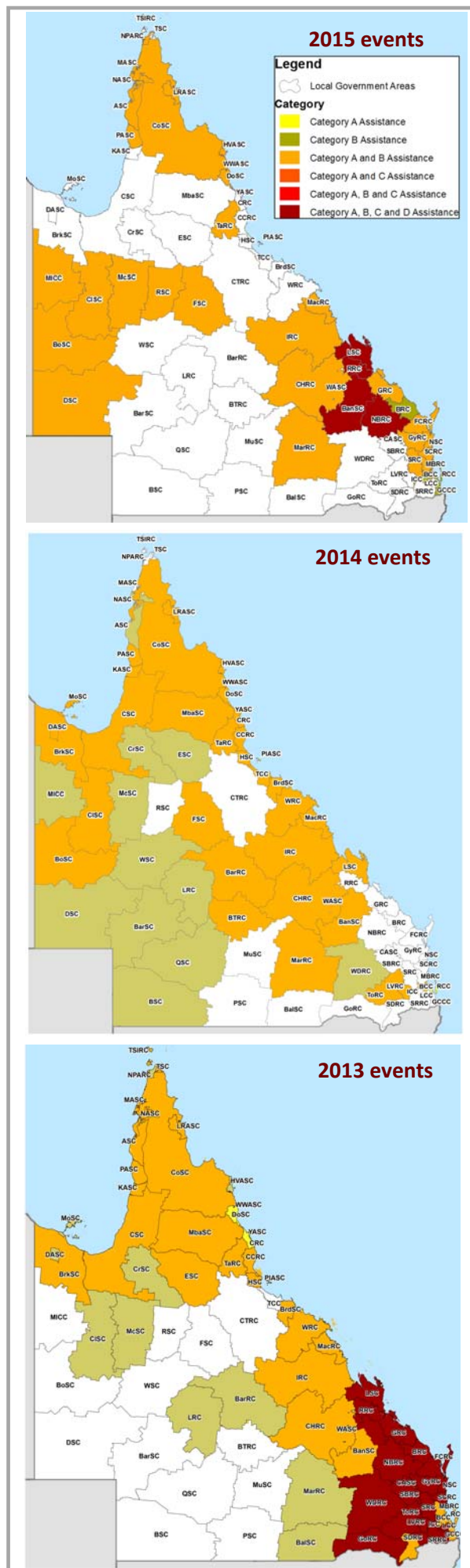
- Tropical Cyclone Ita & Associated Rainfall & Flooding, 11-14 April 2014
- Tropical Cyclone Gillian - 10 to 11 March 2014
- Central Coast & Southern Queensland Trough, 26-30 March 2014
- Central & Western Queensland Flooding & Rainfall, 18-28 February 2014
- North East Queensland Monsoonal Rainfall & Flooding - 7 to 9 February 2014
- Tropical Cyclone Fletcher, commencing 2 February 2014
- Far North Queensland Peninsula Flooding (27-31 January 2014)
- Tropical Cyclone Dylan, 31 January 2014
- North Stradbroke Island Fires, commencing 29 December 2013.

2013 events

- South West Queensland Wildfires, 21 December 2012
- Far Northern Queensland Bushfires, late October - December 2012
- Tropical Cyclone Oswald and Associated Rainfall & Flooding, 21-29 January 2013 *
- Longreach Flood, 18 February 2013 #
- Central & Southern Queensland Low, 25 February - 5 March 2013. #

* Events covered under the National Partnership Agreement for Natural Disaster Recovery and Reconstruction (NPA) between the State and Commonwealth Government signed 8 February 2013 (NPA Events).

Pending agreement to extend the NPA to include two additional 2013 events - Longreach Floods, 18 February 2013 and Central and Southern Queensland Low, 25 February - 5 March 2013.



2.2 Events managed by the Authority (cont.)

2012 events

- Queensland Bushfires, August to October 2011
- Localised Heavy Rainfall Northern Queensland, October 2011 *
- Southern Queensland Flooding, November to December 2011*
- South East Queensland Heavy Rainfall and flooding, 23- 26 January 2012 *
- Western Queensland Tropical Low, January - February 2012 *
- Far Northern Queensland Tropical Low, 3-4 February 2012 *
- North Coast Queensland Storms and flooding and East Coast Hybrid Low, 24 February - 7 March 2012 *
- Northern and Far Northern Queensland Heavy Rainfall & flooding, 15 March 2012 *
- East Coast Low, 22 March 2012. *

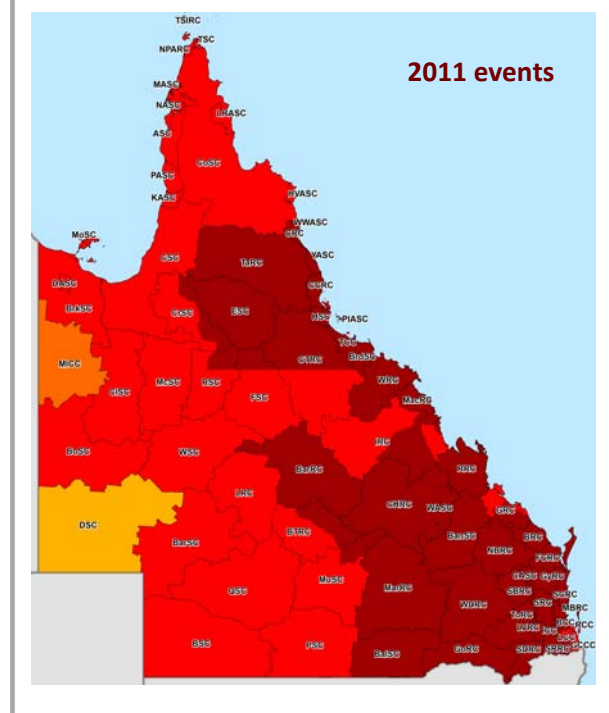
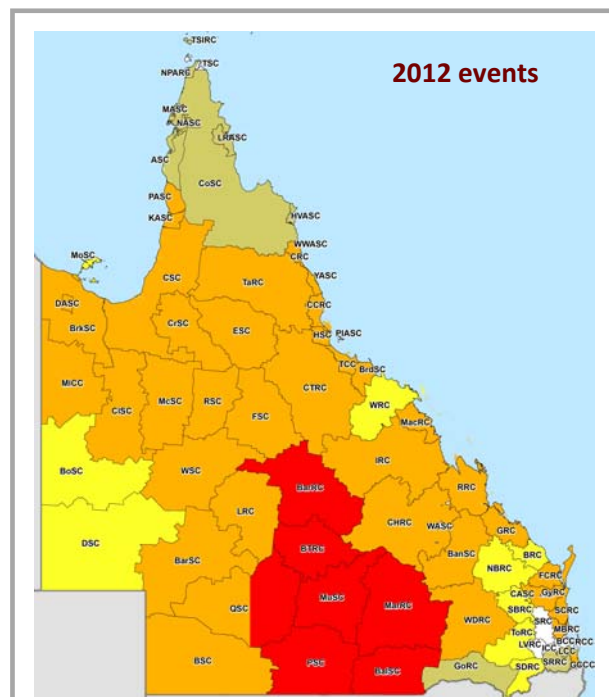
2011 events

- South West Flooding, April 2011*
- Queensland Monsoonal Flooding Event, 28 February 2011*
- Severe Tropical Cyclone Yasi on 2 February 2011*
- Queensland Flooding and Tropical Cyclones Tasha and Anthony, November 2010 to February 2011.*

2007-2010 events managed by the Authority

- Queensland Monsoonal Flooding and Tropical Cyclones Olga, Neville, Ului and Paul, January to April 2010
- Northern, Central and South West Queensland Flooding, 22 December 2009 to 8 January 2010
- South West Flooding, 20 – 25 November 2009
- 2010 South East Queensland Flooding, 9-12 October 2010.
- Queensland Bushfires, September – October 2009
- South West Queensland Low and Associated Flooding, September 2010
- South East Queensland Low, May 2009
- Queensland Monsoonal flooding and Tropical Cyclone Charlotte and Ellie, January - February 2009
- Queensland storms and associated flooding, 16-22 November 2008
- South West Queensland flooding, June 2008
- Queensland Monsoonal flooding, February March 2008
- Queensland Monsoonal flooding, January 2008
- South East Queensland East Coast Low, 27 December 2007 - 7 January 2008
- Central Western Queensland storms and flooding, 22-30 December 2007
- South West Queensland storms and flooding, 23-30 November 2007
- South East and North Coast Queensland East Coast Low, August 2007.

* NPA Events



2.3 Additional assistance measures

The State Government in conjunction with the Commonwealth have activated a range of jointly-funded Category C, Category D and other relief measures to alleviate distress due to the impact of the 2015, 2014, 2013 and 2011 events, summarised as follows:

2015 events (Tropical Cyclone Marcia)

- **Betterment fund - \$20 million** - available for the restoration or replacement of non-State owned assets to a more disaster resilient standard than their pre-disaster standard. The intent of betterment is to increase the resilience of communities to natural disasters, while at the same time reducing future expenditure on asset restoration, reducing incidents, injuries and fatalities and improving asset utility during and after disaster events.
- **Clean-up and restoration of national parks, beaches and recreational assets - \$6 million** - funding to clean-up and repair damaged community infrastructure such as picnic areas, walking tracks and associated amenities.
- **Green waste clean-up - \$1 million** - assist LGAs in the most heavily impacted areas of Rockhampton, Livingstone, Banana and North Burnett with the costs of extensive green waste clean-up and removal activities from private properties and businesses.
- **Industry Recovery Officers - \$750,000** - Placement of Industry Recovery Officers to provide recovery information and support to primary producers in the worst affected areas.
- **Community Recovery Package (Category C) - \$5.1 million** - Funding to engage community development officers and personal support managers and case workers to aid the recovery of severely affected communities in the local government areas of Rockhampton, Livingstone, Banana, North Burnett and part of Gladstone.

2014 events

- **\$1.6 million** funding for the additional costs incurred by Cook Shire Council for disaster reconstruction work on the Peninsula Road Network.

2013 events

- **Betterment fund - \$80 million** - available for the restoration or replacement of essential public assets to a more disaster resilient standard than their pre-disaster standard. The status of the 2013 Events Betterment fund is set out in Section 3.6 of this report.
- **Community Recovery Package (Category C) - \$5 million** - Funding for community development officers in the hardest hit communities of Bundaberg and North Burnett, support for mental health services and a flexible fund that assists communities to implement engagement and development activities.
- **Clean Up and Recovery program - \$10 million** - Program to assist primary producers to clear debris and restore fencing in the worst affected areas; to maintain workers while income generating activities are reduced and to clear debris from watercourse that poses a hazard to downstream infrastructure and activities.
- **Industry Recovery Officers - \$1.5 million** - Placement of Industry Recovery Officers to assist business and primary producers recover from flooding.
- **Enhanced concessional loans and grants** - Loans of up to \$650,000 (with a grant component of up to \$50,000) are available to applicants that have suffered extreme damage such that the existing concessional loan and recovery grants under NDRRA category B and C are insufficient to support recovery.
- **Environmental Recovery program - \$10 million*** - Program to fund existing programs to conduct flood specific clean up and soil conservation work following the 2013 flooding.
- **Rural Financial Counselling Services - \$1.5 million*** - Provision of financial planning advice for rural businesses and primary producers to assist in the recovery of local economies following the disaster.
- **Other measures - \$11.9 million** to fund dredging works to restore Bundaberg Port to its pre-2013 flood clearance depths; and **\$900,000** to assist Bundaberg Regional Council meet the cost of recovery works for community parks and gardens.

2011 events

- **Queensland Local Council Package - \$315 million** - Funding to help local councils repair utilities and infrastructure, and support their efforts in recovering from the floods and Cyclone Yasi. The package comprises two components: \$265 million to fast-track the repair of damaged infrastructure, including the Strengthening Grantham project, Brisbane ferry terminals and Riverwalk; and \$50 million to contribute to regional and remote councils employing people to perform clean-up and repair work.
- **Cassowary Coast Support Package - \$15 million** - Funding to restore vital council infrastructure and restore natural vegetation and beach damage in the Cassowary Coast region. Specifically, the Support Package provides for the repair of Dunk Island Jetty, the repair of Clump Point Jetty and the restoration of Cardwell beach foreshore and its natural vegetation.
- **Exceptional Disaster Assistance Scheme** - Concessional interest loans of up to \$650,000, with grant component of up to \$50,000, to eligible businesses, primary producers and not-for-profit organisations that suffered extreme damage.

In addition, the State Government and Commonwealth have agreed to an extended Day Labour Trial, which enables councils to deliver restoration works with their own workforce on condition that they provide evidence of savings in both time and cost.

* Non-NDRRA measures funded 50% by the State and 50% by the Commonwealth; Commonwealth share is being delivered directly through existing Commonwealth programs.

Section three:

Program Status



3.0 Program Status

3.1 Recent developments

With the next milestone nearing for completion of eligible works for the 2013 events, the Authority is focused on delivery of the remaining program of works from Tropical Cyclone Oswald and other events of 2013 by 30 June 2015 and the progression of the 2014 and 2015 events through the damage assessment, submission preparation and approval and delivery phases.

In late May, the Commonwealth agreed to cost share Category D packages worth \$27.8 million in relation to the 2015 events, including \$20 million Betterment funding.

Following submission of the audited 2013-14 claim for NDRRA financial assistance to the Commonwealth worth \$5.7 billion in March 2015, approximately \$10.8 billion of the Authority's \$13.57 billion program of works has now been acquitted. The Commonwealth's reimbursement to the State of its share of NDRRA expenditure is dependent on lodgement of the audited claim.

Following Tropical Cyclone Marcia and other disaster events of 2015, the Authority is assisting affected Councils complete damage assessment and prepare submissions for NDRRA funding.

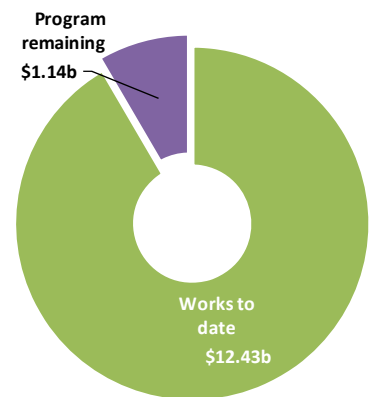
3.2 Combined program status

The estimated program of works for all events actively managed by the Authority (2009 to 2015) is \$13.57 billion.

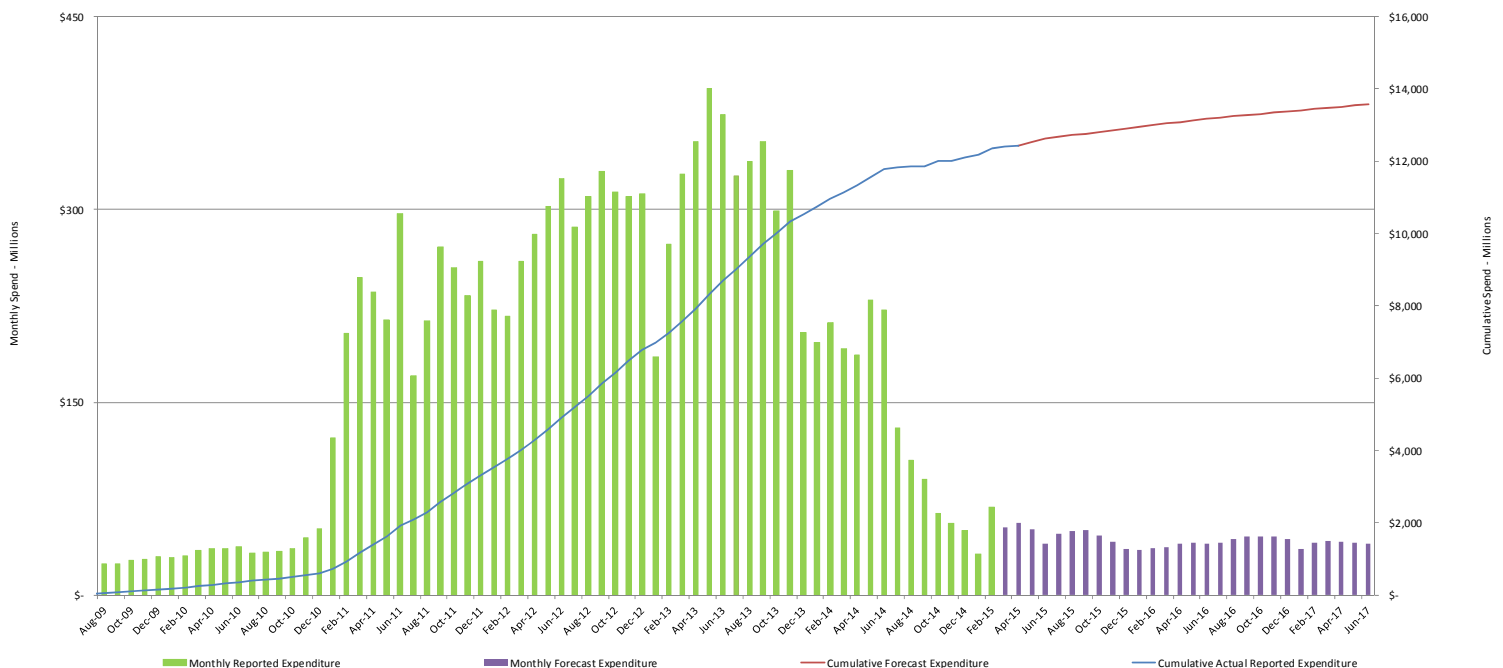
The estimated cost of the damage from the 2015 Events is \$748 million, the damage from the 2014 and 2013 Events is estimated to be \$411 million and \$1.9 billion respectively and the preliminary final cost of the 2012 and 2011 Events is estimated to be \$1.5 billion and \$6.6 billion respectively. The cost of the 2009-10 Events managed by the Authority has been finalised at \$2.4 billion.

Since the last report, the combined program of works for all events managed by the Authority has progressed as follows:

- a cumulative value of \$18.32 billion in submissions have been received by the Authority to 31 May 2015
- a cumulative total of \$18.15 billion has been processed by the Authority to 31 May 2015
- a cumulative value of \$12.43 billion of the revised \$13.57 billion works program (2009 to 2015) has been reported to the Authority as being in progress or delivered by delivery agents as at 30 April 2015.



3.3 Program of works expenditure

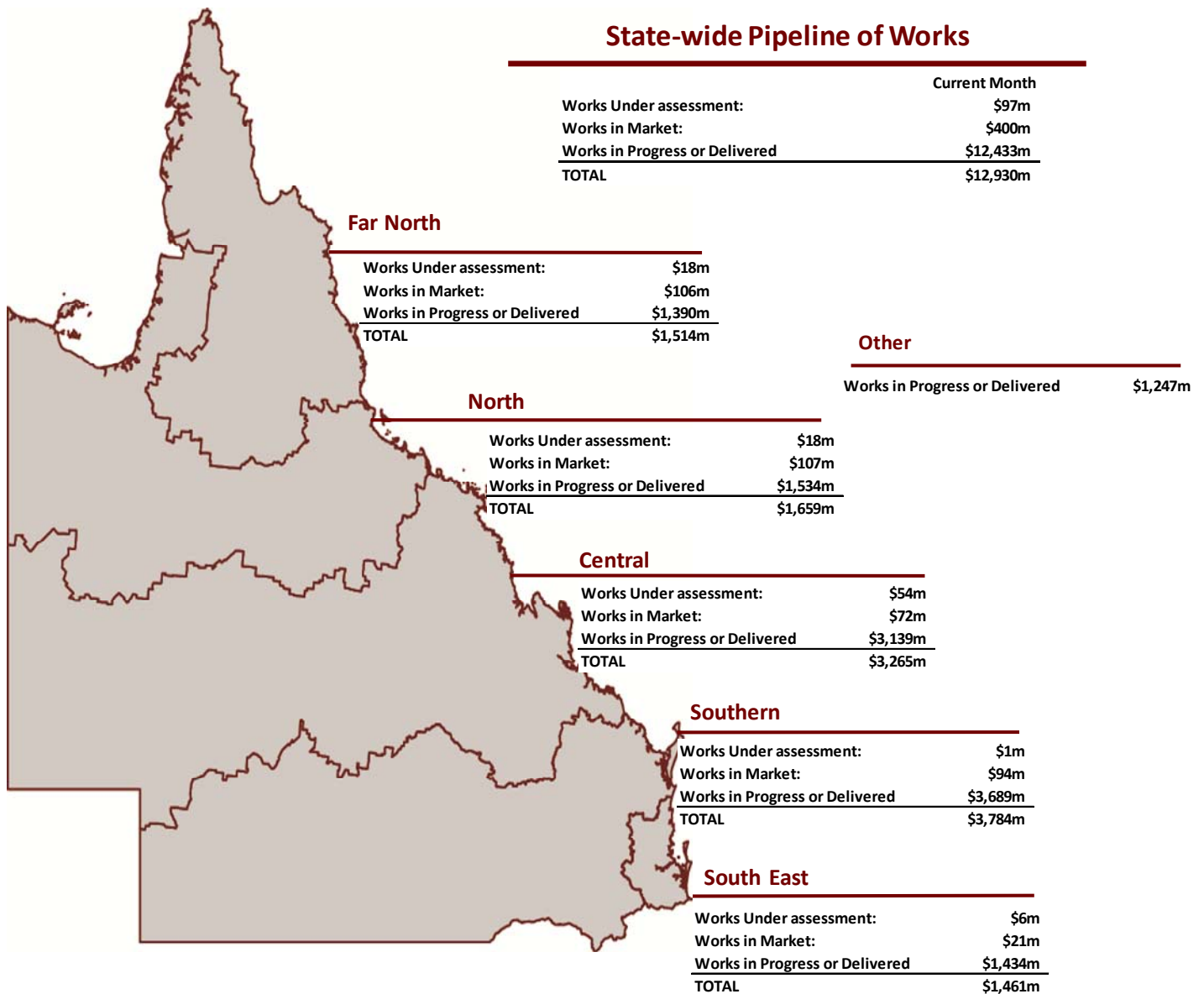


Source: the Authority - February 2015 NDRRA Estimates Review & 31 May 2015

3.4 State-wide pipeline of works

Following completion of the February 2015 NDRRA estimates review process, the Pipeline of works for events actively managed by the Authority (2009 to 2015) has an estimated program value of \$13.57 billion, the status of which is set out below.

State-wide Pipeline of Works



Source: DTMR at 30 April 2015; & Authority at 31 May 2015

Note:

1. Works Under Assessment and Works in Market represents data as at 30 April 2015 (DTMR) and 31 May 2015 (LGAs and Other). Works in Progress or Delivered represents spend by delivery agents to 30 April 2015 as reported to the Authority at 31 May 2015. Additional works have been conducted but are yet to be reported to the Authority
2. Other encompasses SDAs other than DTMR as well as the 2011 and 2013 Other Assistance.

Pipeline of Works Definitions

Stage	Description
Works under Assessment	Applications for packages which are currently under assessment by the Authority or are awaiting additional information from the applicant.
Works In Market	Estimate of spend remaining on works in progress and packages which have been approved by the Authority and are in the tender or contract process.
Works in Progress or Delivered	Expenditure as reported to the Authority on packages in progress or delivered.

Source: DTMR at 30 April 2015; and the Authority at 31 May 2015

3.5 State-controlled roads and highways

DTMR set up its Transport Network Reconstruction Program (TNRP) to manage the recovery and reconstruction of Queensland's integrated transport system following the damage from natural disaster events in 2010, 2011, 2012 and 2013. For the 2014 events, DTMR is managing the recovery and reconstruction works through its Program Delivery and Operations Branch. The reconstruction program required as a result of 2015 event damage to the State's transport network has not yet been scoped.

To 30 April 2015, DTMR has spent more than \$6.4 billion on recovery and reconstruction of the transport network across the State arising from the natural disaster events that occurred between 2010 and 2015. The transport system includes state-controlled roads, ports, navigation aids and the rail network:

Status

- All Queensland Rail lines affected by disaster events have been recovered.
- All ports, navigation aids, jetties and other boating infrastructure damaged by natural disaster events have been recovered.
- DTMR has substantially completed its entire 8,741km road reconstruction works arising from the 2010 to 2013 disaster events with only minor works remaining to be undertaken on some sites.
- DTMR is currently undertaking its 2014 event reconstruction program. Of the 215km of roads forecast to be reconstructed following damage from the 2014 events, 157km of works have been completed and a further 24km is under construction on active works contracts as at 30 April 2015.
- During April 2015, DTMR completed works including works on Clermont–Alpha Road in DTMR's Central West District and Mossman–Daintree Road in its Far North District. DTMR also commenced construction on projects on the Mulligan Highway in the Far North District during the month.
- DTMR is currently scoping its reconstruction program for the 2015 events.



(Source: DTMR, 30 April 2015)

3.6 Betterment fund status

The \$80 million 2013 Event Betterment fund is a Category D relief measure available to LGAs that have been declared for NDRRA assistance for the flood, storm and cyclone disaster events that occurred in Queensland in early 2013 for the restoration or replacement of essential public assets to a more disaster resilient standard than their pre-disaster standard.

The 2013 Event Betterment Fund was announced in February 2013 following Tropical Cyclone Oswald which caused damage to many of the assets which had been repeatedly damaged and restored from earlier disaster events. In August 2013, the Betterment fund was extended to also cover LGAs declared for the two additional disaster events that occurred after Oswald through to June 2013 - Longreach Flood (18 February 2013) and Central and Southern Queensland Low (25 February to 5 March 2013).

In late May 2015, the Commonwealth Government agreed to contribute funding towards an additional \$20 million Betterment fund to restore or replace essential public assets that were damaged in the 2015 events to a more disaster resilient standard.

Where a damaged asset is approved as a betterment project, the normal cost of restoring or replacing the asset to its pre-disaster standard is funded under Category B NDRRA and the incremental cost to 'better' the asset to a more disaster-resilient standard is financed through a capped allocation from the Betterment fund and Council contributions.

Betterment funding is allocated on the basis of the estimated cost of the approved projects. Should the betterment component of a project be delivered for a cost below the capped allocation, then the savings will be returned to the Betterment fund for allocation to other eligible projects.

Status of 2013 Event Betterment Fund

- Expressions of Interest (EOI) were received by the Authority from 48 councils with approximately \$1 billion worth of Betterment projects to improve the resilience of infrastructure to natural disasters following the 2013 events.
- The Betterment 2013 Event Fund has now been allocated to 232 approved projects across 35 LGAs. Betterment projects include improved bridges, floodways, culverts, levees, water treatment plants and numerous roads across Queensland.
- To date, 178 Betterment projects worth approximately \$110 million, and including \$48 million funding from the 2013 Event Betterment fund, have been reported to the Authority as practically complete. The remaining approved projects are due to be complete by 30 June 2015.

Section four: Progress Reports



4.1 Severe Tropical Cyclone Marcia Recovery Plan

The Recovery Plan has been prepared to guide the activities which will help ensure that impacted communities recover as quickly as possible from the devastating and widespread effects of Severe Tropical Cyclone Marcia.

The Recovery Plan provides strategic guidance for the coordination and management of recovery, reconstruction and disaster resilience activities and initiatives undertaken by the Queensland Government, local governments, industry and other stakeholders after the event. It also provides strategies to work with affected communities in their recovery process.

The Recovery Plan identifies key recovery tasks, recovery milestones and estimated completion dates of the projects to be undertaken by Queensland Government lead and support agencies over the recovery and reconstruction phase.

Recovery phases

The recovery activities will be undertaken across three broad phases.

Phase one is already complete with post-impact recovery activities deployed immediately after the cyclone crossed the coast. Phase Two Recovery and Reconstruction is now underway and will conclude on 30 June 2017 when NDRRA funding timelines expire for this event, while Phase Three will see any outstanding recovery initiatives transition to agencies to be managed.



Disaster Recovery Coordinators

On 23 February 2015, Acting Commissioner Katarina Carroll, Queensland Fire and Emergency Services was appointed as the interim Disaster Recovery Coordinator for two weeks before Acting Assistant Commissioner Brian Codd, Queensland Police Service took over the rebuilding task. The Disaster Recovery Coordinator coordinates the recovery process for affected areas, and the recovery and reconstruction efforts of government and non-government agencies.

Functional lines of recovery

Functional Recovery Groups (FRG) have been established to lead and coordinate the planning and implementation of State whole-of-government recovery across five lines of recovery. The roles and responsibilities of the FRGs are set out in the Recovery Plan and are summarised below. The following tables also set out the status of the progress of recovery for each FRG as reported by the Department of Infrastructure, Local Government and Planning (DILP) as at 6 May 2015.

Human & Social

Role	Key responsibilities
To lead and coordinate the planning and implementation of human and social recovery activities in line with the Recovery Plan.	<ul style="list-style-type: none"> Provision of strategic advice on human and social recovery issues and services Coordination of human and social services to support the recovery effort delivered by state, local and Australian Government agencies, non government organisations (NGOs) and other relevant service providers Coordination of financial assistance to eligible applicants for the Personal Hardship Assistance Scheme (PHAS) and Essential Services Safety and Reconstruction (ESSR) Scheme under NDRRA or State Disaster Recovery Arrangements Coordination of the provision of personal support, counselling and specialised mental health services and facilitation of the redevelopment of social networks and community infrastructure to strengthen and build resilience.

Progress of recovery

- NDRRA financial assistance of \$15.49 million has been provided to individuals and families under the PHAS and ESSRS - *refer opposite*
- Commonwealth approval has been received for a \$5.1 million NDRRA Category C Community Recovery Fund to engage community development officers and personal support managers and case workers to aid the recovery of severely affected communities. Planning has commenced for delivery of assistance.
- Outreach continues in Rockhampton and Yeppoon. To date, 4,948 people have been seen on 3,837 outreach visits. There has been 2,877 face to face contact hours and 5,440 referrals to non-government organisations
- Queensland Health has progressed approval for clinical mental health services to Queenslanders severely affected by the event for a two year period.

NDRRA financial assistance to individuals and families				
	Paid (\$'000)	People assisted	Applications approved	Under assessment
Immediate Hardship Assistance	\$5,067k	28,148	12,568	-
Essential Household Content Grants	\$1,228k	3,050	1,237	7
Structural Assistance Grants ^{1,2}	\$444k	216	103 paid 43 pending payment	43
ESSR Scheme Grants ^{1,2}	\$51k	59	32	44
Red Cross Food Vouchers	\$8,700k	41,094	40,605 vouchers	-
Total	\$15,490k			

- Payments may be delayed due to clients deferring payment until completion of relevant contractor works.
- Applications may be delayed due to outstanding documentation required to support application.

4.1 Severe Tropical Cyclone Marcia Recovery Plan (continued)

Economic

Role	Key responsibilities
To advise the Government on economic impacts and provide information on needs of local government and industry getting the economy back to full production.	<ul style="list-style-type: none"> Provision of strategic advice on economic recovery issue and services Identification of economic impacts and key issue that inform recovery efforts Coordinate activities to assist in restoring the economy including assistance business, industry and regional recovery and renewal through targeted support and assistance.

Progress of recovery

NDRRA financial assistance to primary producers, small business & not for profits (NFPs) of \$1.03 million paid as follows:

		Paid (\$'000)	Applications paid	Under assessment
Primary producers	Freight subsidies	\$0.2k	1	1
	Natural Disaster loans	-	-	2
	Category C Grants	\$767k	141	47
Small business/ NFPs	Natural Disaster loans	-	-	8
	Category C Grants	\$261k	58	11

Building

Role	Key responsibilities
To lead, coordinate and action temporary accommodation solutions for displaced people; repair and reconstruct state building assets; and provide building advisory services to support community recovery.	<ul style="list-style-type: none"> Facilitation of solutions to address immediate and longer-term temporary accommodation needs of community members and the recovery workforce Assessment and coordination of the repair and restoration of State public buildings Support and provide advice to the recovery supply chain including contractors, subcontractors and material suppliers.

Progress of recovery

Recovery complete

- All 99 emergency housing assistance requests have been finalised
- All 1,466 units of damaged social housing accommodation are operational
- All 147 damaged government assets have been restored to service
- All schools and other government facilities have been made safe and operational. The final education facility closed during Cyclone Marcia, Goodstart Rockhampton Early Childhood Centre, reopened on 30 March 2015
- QBCC, the Insurance Council of Australia and Industry Groups continue to support the recovery of impacted communities through facilitation of advice and dissemination of information including holding community forums on 18 and 19 March 2015

Environment

Role	Key responsibilities
To guide the Government in achieving sustainable and resilient environmental recovery and coordinate activities which the make best use of resources.	<ul style="list-style-type: none"> Identification and monitoring of impacts on the environment and the provision of strategic advice to inform recovery efforts Coordinate and prioritise the rehabilitation of impacted ecosystems, wildlife, natural resources, cultural heritage values and heritage places Consideration of strategies to reduce future impacts on the environment.

Progress of recovery

- All national parks affected by Tropical Cyclone Marcia have since reopened. Of 77 protected areas affected by the event:
 - 74 parks are fully open
 - 3 parks are partially open.
- During April, 4 parks that had previously been partly reopened were fully opened.
- Minor repairs have been completed to a groundwater monitoring site in the Don and Dee Rivers ahead of full restoration. Repairs to surface water gauging station supporting actions on Mount Morgan Mine site scheduled during May.
- Water quality data for sampling taken during the event is currently being analysed.

Roads and Transport

Role	Key responsibilities
Coordinates the efficient and effective delivery of road and transport recovery activities.	<ul style="list-style-type: none"> Deliver the state-controlled roads and transport response and reconstruction, including assessing damage, prioritising and delivering recovery and reconstruction activities and considering resilience and disaster mitigation measures as part of the works.

Progress of recovery

- DTMR districts are currently responding with emergent repairs and detours where necessary
- All damaged roads have reopened or have alternative access routes in place
- DTMR responded with emergent repairs and detours where necessary during the 60-day emergent works period
- The majority of reconstruction works arising from the 2015 events are expected to be planned, designed and let to market by late 2015
- Options to replace and realign the Burnett River Bridge and its approaches are currently being investigated with invitations for offer for business case and design having closed on 1 May 2015.

(Source: DILP, 6 May 2015)

4.2 Program spotlights

Brisbane City Council Ferry Terminals update

The January 2011 floods damaged all of Brisbane City Council's CityCat and City Ferry terminals. To return service as soon as possible, Council replaced the seriously damaged terminals with temporary terminals.

Seven temporary terminals were built to pre-flood standards meaning that in the event of another major flood, it was likely it would need to be rebuilt again.

Works to replace the terminals with more resilient, permanent structures are being delivered as part of a Category D (exceptional circumstances) funding package. The new terminals are designed to withstand a one-in-500-year flood event with the designs incorporating robust piers engineered with the capacity to deflect heavy objects in flood waters, and gangways that detach at the shore end in the event of a flood, allowing it to swing behind the pontoon and avoid being struck by debris.

The replacement ferry terminals are located at The University of Queensland (St Lucia), Regatta (Toowong), North Quay (CBD), Maritime Museum (South Brisbane), QUT Gardens Point (CBD), Holman Street (Kangaroo Point) and Sydney Street (New Farm).



Sydney Street terminal opened



UQ St Lucia terminal opened



Status of works

Four ferry terminals have now opened with the three remaining terminals under construction at Holman Street, North Quay and Maritime Museum on schedule for completion in June.

The ferry terminal works are being delivered by McConnell Dowell Constructors.

During May, **Sydney Street** terminal and the **University of Queensland (UQ)** terminal at St Lucia opened. Following the opening of the **Regatta** terminal on 25 March and **QUT Gardens Point** terminal on 14 April 2015, Sydney Street opened on 6 May 2015 and UQ St Lucia was completed and opened on 25 May 2015.

Marine works commenced in mid-April 2015 at the **Holman Street** terminal site with all piles installed by month-end. Works on the waiting area are ongoing with installation of the gangway and pontoon scheduled for mid-June.

Works on the waiting areas for the **North Quay** terminal are nearing completion. The pontoon and gangway at the site have now been installed with fit-out works ongoing.

Following recommencement of works on the **Maritime Museum** terminal in March 2015, works on waiting area and walkway structure works are underway and landside works are approximately 95% complete. Installation of the

Left: Works on waiting areas—Maritime Museum terminal (top); and installation of deflection pier at

4.2 Program spotlights (continued)

Rockhampton Regional Council Upper Ulam Road, Bajool built back better

The last of Rockhampton Regional Council's 10 betterment projects to build stronger, more disaster-resilient infrastructure in the region has been completed with the upgrade of the floodway on Upper Ulam Road at Bajool.

The community of Bajool, about 40km south of Rockhampton, had seen the benefits of building back better even before the Upper Ulam Road floodway project was finished.

Bajool residents saw first-hand the benefits of betterment with the floodway upgrade receiving little damage in the recent Tropical Cyclone Marcia event, despite it being submerged under more than a metre of floodwaters.

The low-level Upper Ulam Road concrete floodway, which crosses Station Creek, had suffered repeated damage in previous natural disasters but remained resilient in the face of Tropical Cyclone Marcia's onslaught despite being only three-quarters finished at the time.

The floodway was damaged and rebuilt to the same standard in 2011, only to be damaged again in 2013, costing the community time and money. Upper Ulam Road is the only reliable access route to the Bruce Highway for the community of Bajool and understandably its residents don't want to be isolated in floods.

Thanks to a \$475,000 contribution from the Betterment Fund, Rockhampton Regional Council has made the floodway more resilient by increasing the height and capacity of the culverts to prevent the impact of overtopping floodwaters.

Rockhampton Regional Council Mayor Margaret Stelow said Council was pleased with the way the betterment project for Upper Ulam Road had fared in the aftermath of Tropical Cyclone Marcia.

"Upper Ulam Road holding up to that event goes to show building stronger, more resilient infrastructure is a much better way to go rather than just repairing the asset only to have it damaged time and time again," Cr Stelow said.

"Council worked closely with the Queensland Reconstruction Authority on the betterment project and after it was damaged in 2013, instead of just repairing the crossing to its original standard, we are building it back bigger, better, and stronger.

"The Rockhampton Regional Council thanks both the Queensland Government and the Commonwealth Government for establishing the Betterment Fund and allowing us to build stronger and more resilient infrastructure," she said.

The Upper Ulam Road project is last of 10 projects throughout the Rockhampton region to be completed by Council as part of the Betterment Fund. Other projects include upgrades to Black Gin Creek Road, Bycroft Road, Dunning Road, Flaherty Road, Hopkins Road, Kalapa-Black Mountain Road, San Jose Road, Smith Road, and Weir Park Road.



Upper Ulam Road damage post-Cyclone Oswald – January 2013



Upper Ulam Road floodway under construction survives Cyclone Marcia - March 2015



Betterment works complete and in use on Upper Ulam Road.

4.2 Program spotlights (continued)

Somerset Regional Council Completion of Council's 2013 event and betterment program

Somerset Regional Council Mayor Graeme Lehmann was joined by Senator for Queensland Barry O'Sullivan, Federal Member for Blair Shayne Neumann, State Member for Ipswich West Jim Madden and Authority Chairman Major-General Richard Wilson AO (ret'd) at a ribbon cutting ceremony on Tuesday 9 June to mark completion of Council's 2013 event program.

Eleven bridges linking rural communities in Somerset have been upgraded thanks to more than \$10 million NDRRA and Betterment funding. The ageing timber bridges provided crucial access for primary production communities.

With funding from the Betterment Fund, Council has been able to replace its old timber bridges with new purpose-built concrete bridges that have higher flood immunity. Time and time again Somerset residents have seen their roads and bridges repaired only to be damaged again in the next flood. In some cases the bridges have been completely washed away.

Cr Lehmann said in addition to the new bridges, works also included upgrades to culverts, the restoration and sealing of approaches to bridges and the installation of rock protection where required.

"Somerset Regional Council has committed almost \$2 million towards these projects and we are grateful to our Federal and State counterparts for the opportunity to strengthen these vital links in our community," Cr Lehmann said.

"Reliable bridges and road networks are vital but they are even more important when you have farmers and families relying on the road network which is the basis of the local economy and employment.

"The completion of these bridge projects brings to a close Council's betterment and restoration program to repair the extensive damage caused by the 2013 floods and I commend our contractors and staff for getting the job done on time."

Council was approved for 30 Betterment projects to upgrade bridges, crossings and floodways that were damaged in 2011 and 2013 with an estimated total project cost of \$14 million, including about \$7.2 million from the Betterment Fund.



Damage to Ted Skinner Crossing on Esk-Crows Nest Road following 2013 flood



George Bell Crossing washed away in 2013 flood event



Damage to girders on Wunulla Lane Bridge from 2013 events



Above: Ribbon cutting ceremony to mark completion of Council's 2013 program on 9 June 2015—Kropps Bridge (left) and Toogoolawah Pedestrian Bridge (right)



Left: Completed works at Kropps Bridge on Grigor Creek Road which was upgraded to a more flood resilient standard with Betterment funding

The 11 bridges in Somerset damaged in the 2013 events and restored or made better with NDRRA funding assistance are:

- Kropps Bridge at Gregors Creek Road
- Toogoolawah Pedestrian Bridge
- Ted Skinner Bridge on Esk-Crows Nest Road
- George Bell Bridge on Ivory Creek Road
- Wunulla Lane Bridge on Wunulla Lane
- Scrub Creek Road Bridge on Scrub Creek Road
- Jones Bridge on Gregors Creek Road
- Gerald Ryan Bridge on Mt Stanley Road
- Ted Gault Bridge on Maronghi Creek Road
- Glenmaurie Road Bridge on Glenmaurie Road
- Dunning's Bridge on O'Leary's Lane.

4.2 Program spotlights (continued)

DTMR

Reconstruction works completed on popular tourist route



Rising flood waters on Mossman–Daintree Road following Tropical Cyclone Ita in April 2014 (courtesy abc.net.au)



Completed pavement rehabilitation on Mossman–Daintree Road prior to linemarking

Mossman–Daintree Road is a 35km long road between Mossman and Daintree in Far North Queensland. It is a popular tourist route linking Captain Cook Highway with the Daintree River ferry service and coastal destinations further north.

In the days after Severe Tropical Cyclone Ita made landfall as a Category 4 system on 11 April 2014, Mossman experienced torrential rainfall, with several properties threatened by the resulting flooding.

Severe Tropical Cyclone Ita was the strongest tropical cyclone to impact Queensland since Cyclone Yasi three years prior and brought damaging wind gusts of more than 100km/h to coastal areas around Cooktown. The greatest impact was from the associated heavy rainfall, with many areas receiving up to 300 mm in 24 hours. This caused moderate flooding throughout most of north Queensland, including the Daintree and Mulgrave Rivers.

Damage to the road network included areas of seal and pavement failures, longitudinal ruts, potholing, shoving, depressions, crocodile cracking, numerous shoulder washouts and the accelerated deterioration of the road due to pavement and subgrade saturation.

Restoration works undertaken between Mossman township and Mossman Rotary Park were completed in April 2014.

Works involved removing failed pavement material, treating unsuitable subgrade and replacing it with asphalt overlay. Works also involved full width road reconstruction at two sites north of Mossman. At numerous sites along the Mossman–Daintree Road, shoulder washouts from the torrential rainfall were reinstated with new material.

Section five: Communications



5.0 Communications

The Authority is focused on building stakeholder confidence in the reconstruction by ensuring consistent and regular communication of public information.

5.1 Communicating progress

Media analysis

There has been a total of 429 media items in May 2015 (177 print – 41%, 48 TV – 11%, 204 radio – 48%), which reached a cumulative audience of over 15 million people, with the focus this month being on the ongoing recovery efforts from Tropical Cyclones Marcia and the South East Queensland storm of 1 May 2015.

There were media mentions for regions recovering from the current and previous natural disaster events, including articles in The Australian, Ayr Advocate, Cairns Post, Canungra Times; Capricorn Coast Mirror, Central Telegraph, The Courier-Mail, Daily Mercury, Daily News, Dalby Herald, Gladstone Observer, Gympie Times, Herbert River Express, Innisfail Advocate, News Mail Bundaberg, North Lakes Register, Port Douglas & Mossman Gazette, Queensland Times, Rockhampton Morning Bulletin, South Burnett Times, Sunday Mail, Toowoomba Chronicle, and the Tully Times; TV coverage on the ABC, Channel 10, Nine, WIN, and Seven networks throughout the State; and radio mentions on ABC Radio Queensland, 4BC, 4KQ, River FM, 4WK Toowoomba, 4BC, 4CA Cairns, 4KZ Innisfail, and Zinc FM.

Also making news this month was the announcement of a \$5.1 million NDRRA Category C package for community recovery. This saw articles in the Central Telegraph, Morning Bulletin, Gladstone Observer, and the Toowoomba Chronicle, as well as TV and radio mentions on the ABC, Channel 10, ABC Radio Queensland, and 4RO Rockhampton.

Engagement activities

On 5 May 2015, **Queensland Deputy Premier and Minister for Infrastructure, Local Government and Planning Jackie Trad** and **Authority Chief Executive Officer (CEO) Frankie Carroll** met with Federal Minister for Justice, the Hon Michael Keenan MP to discuss the Productivity Commission's inquiry into natural disaster funding and day labour.

On 13 May 2015, **Deputy Premier Trad** and Authority representatives visited Rockhampton Regional Council and Livingstone Regional Council to inspect and discuss their respective reconstruction programs.

Communications

There are a number of methods available to the public to communicate with the Authority.

The Authority's website provides information to the public and continues to be enhanced with ongoing updates, including information about Betterment projects and current recovery efforts. There have been a large number of visits to the website since it was launched on 18 February 2011. At 31 May 2015, total website visits amounted to 465,976 - a 1% increase since last month. *(See Figure 5.1.1)*

In May, the Authority received an additional 50 calls to its dedicated hotline and 257 additional pieces of written correspondence were received. *(See Figure 5.1.2)*

Fig. 5.1.1 Website traffic

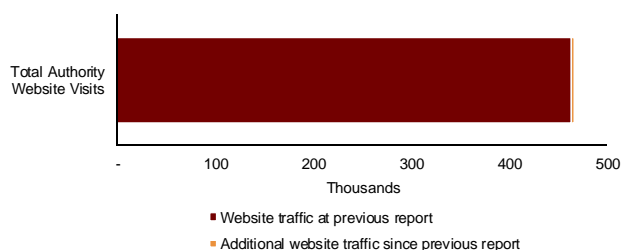
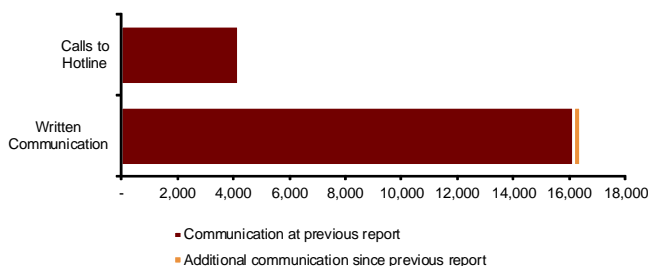


Fig. 5.1.2 Communications



(Source: the Authority at 31 May 2015)

5.2 Media reports

Premier promises assistance funding

PEOPLE in the Banana Shire who were affected by Tropical Cyclone Marcia will have access to State Government funding following an announcement made on Tuesday by Premier Anastacia Palaszczuk.

A total of \$5.1 million is to be shared with five central Queensland communities for counselling and support for residents affected by the cyclone.

Community development funding of \$369,402 each will go to Banana, North Burnett and Rockhampton, with Livingstone receiving \$460,380 and Gladstone \$218,426 to reflect the differing impact of the event in those communities.

Announcing the allocations, Ms Palaszczuk said that the devastating impact of TC Marcia had affected the communities deeply.

"This funding will allow us to help people through these difficult times," she said.

Commonwealth Minister for Justice



» HELP ON ITS WAY: Anastacia Palaszczuk. PHOTO: LIAM KIDSTON

Michael Keenan and Queensland Minister for Police, Fire and Emergency Services Jo-Ann Miller announced additional recovery assistance for cyclone affected communities in April following Cyclone Marcia.

Mr Keenan said the Australian and Queensland governments jointly fund the Community Recovery Fund under Category C of the Commonwealth-State Natural Disaster Relief and Recovery Arrangements (NDRRA).

\$16m road fix as shire recovers

DOUGLAS Shire Council will soon begin works to repair more than 74 cyclone and flood damaged roads and new information tools will keep motorists up to speed on what to expect.

The council has received approval for \$16.18 million in repairs, including those that were done in the immediate aftermath of last year's flood and cyclone events.

Mayor Julia Leu said the council had compiled a database of people who would receive email notifications of roadworks 14 days before the starting date, and again two days before. Council's website also features a map with all roadworks marked with coloured Men at Work icons.

Email ndrra@douglas.qld.gov.au or call 4099 9414 to register to receive email updates. For the map visit: douglas.qld.gov.au/activity-map/ndrra-activity-map.

Cairns Post, 27 May 2015

Hardship relief is extended to Logan

THE State Government has extended emergency financial support for eligible residents living in storm-affected streets in south-east Queensland.

Member for Waterford Shannon Pentiman said targeted assistance has been extended after consulting with local councils about the level of damage in parts of Logan.

"I have been working hard, along with my fellow Logan MPs, to make sure that people worst hit by these storms in our community can access the support they need," she said.

Immediate Hardship Assistance under State Disaster Relief Arrangements is available, along with Essential Household Contents Grants and Structural Assistance Grants.

Local residents affected by the storm are also able to drop in to the Community Recovery Hub in Marsden.

The Community Recovery Hub is a one-stop shops for people seeking help, run by the

Communities Department, councils, Red Cross, Lifeline and GAIT representatives.

Anyone affected and needing support and assistance to recover from this event can phone the Community Recovery Hotline on 1800 173 349.

Streets eligible for assistance include:

- Park Ridge
- Park Ridge Rd (Jedfire St to Ceratonia St)
- Marsden
- Second Ave (Third Ave to Coolmunda St)
- Ouelia St
- Princess St
- Pauline St (Princes St to Lynelle St)
- Zebra St
- Kurrjong Dr
- Macaranga St (Princess St to Tamarind St)
- Tamarind St
- Cypress Dr (Barklya Blvd to Tamarind St)
- Browns Plains
- Janita Dr
- Woodridge
- Phillip St
- Chambers Flats
- Chambers Flats Rd (Kenny Rd to Grassway Court)
- Norris Creek Rd (Gaynor Rd to Friar St)

Brisbane Reporter, 15 May 2015

Road to repairs on track

DOUGLAS Shire Council is on track to deliver millions of dollars of road repairs under the Natural Disaster Relief and Recovery Arrangements.

Repair design plans are ready, with roadworks expected to begin next month.

The cost of council's ap-

proved NDRRA roadworks to date is in excess of \$14 million, with more than 70 roads to be repaired in the Douglas Shire.

Council has appointed a traffic management officer who has met businesses, tourism operators and indigenous groups to discuss the program.

Cairns Post, 11 May 2015



June Lavell outside her Rockhampton home following Cyclone Marcia, and the house three months on.

Premier sees the pain TC Marcia brought to the CQ community

IT WAS after speaking to the community that Premier Anastacia Palaszczuk knew Central Queenslanders desperately needed counselling and support services.

The Premier was in Rockhampton and Livingstone for the Community Cabinet meeting over the weekend, and yesterday announced \$5.1 million for residents affected by Cyclone Marcia to be divided between five local government areas.

The funds cover counselling case workers to identify personal and community needs to support medium to long-term community recovery.

Rockhampton, Gladstone and Livingstone will share close to \$2 million in personal support and counselling

funding, and Livingstone will receive a community development fund of \$460,380.

Ms Palaszczuk said the disaster had deeply affected the communities.

"Such a shocking event causes a huge amount of fear and stress and it takes a lot to recover... this funding will allow us to help people through these difficult times," she said.

Minister for Justice Michael Keenan said the Federal and State governments jointly funded the Community Recovery Fund under Category C of the Natural Disaster Relief and Recovery Arrangements.

The funding is the third element of Category C assistance announced for the region.

Rockhampton Morning Bulletin, 26 May 2015

Help coming after Marcia

Counselling and support on offer throughout central Queensland

PEOPLE in the Gladstone region who were affected by Tropical Cyclone Marcia will have access to State Government funding to help following an announcement made yesterday by Premier Anastacia Palaszczuk.

A total of \$5.1 million is to be shared with five central Queensland communities for counselling and support for residents affected by the cyclone. Community development funding of \$369,402 each will go to Banana, North Burnett and Gladstone, with Livingstone receiving \$460,380 and Gladstone \$218,426 to reflect the differing impact of the event in those communities.

Announcing the allocations, Ms Palaszczuk said that the devastating impact of TC

Marcia had affected the communities deeply. "Such a shocking event causes a huge amount of fear and stress and it takes a lot to recover," she said. "This funding will allow us to help people through these difficult times."

Commonwealth Minister for Justice Michael Keenan and Queensland Minister for Police, Fire and Emergency Services Jo-Ann Miller announced additional recovery assistance for cyclone affected communities in April following Cyclone Marcia.

Mr Keenan said the Australian and Queensland governments jointly fund the Community Recovery Fund under Category C of the Commonwealth-State Natural Disaster Relief and Recovery

Arrangements (NDRRA). "The Community Recovery Fund is designed to assist severely affected communities with their medium to long-term recovery by providing funding aimed at restoring social networks and building community resilience," Mr Keenan said. He said the Australian and Queensland governments would continue to work together to ensure disaster affected communities receive the support they needed to recover.

The \$5.1m will be distributed over two years, and will be used for employing community development officers and providing counselling and support.

Gladstone Observer, 27 May 2015

Flood works on track for June finish

TOOWOOMBA Regional Council says it is on track to complete major culvert upgrades along

Toowoomba's East Creek during June this year. Infrastructure Services committee chair Cr Carol Taylor said work had progressed to schedule since starting in March.

Cr Taylor said the imminent completion of the culvert works at South and Mary St marked additional improvements along the creek corridor.

"This is important work in its own right, but also is part of council's wider systematic approach to flood mitigation works under the East Creek Master Plan," Cr Taylor said.

"The projects will improve the flood immunity at both road crossings of East Cr and road users should experience less inconvenience during smaller flood events and improved public safety during larger flood events."

"The South St project includes upgrading the culvert and the East Creek culvert's west of the MacKenzie St roundabout to improve the flood immunity of the

South Street road crossing."

The channel has been widened to the north and south of the South Street culverts to facilitate an appropriate transition of flood water through the new, larger culverts.

"Similarly, the Mary St culvert upgrade work has included widening the immediate channel upstream and downstream of the recently constructed culverts to transition floodwaters through the larger culverts under Mary St," Cr Taylor said.

"In addition, the Horton St crossing of East Cr to Kitchener St has been closed permanently to traffic to improve the conveyance of floodwaters along this reach of the creek."

"A cul-de-sac has been constructed to allow vehicles to turn around at the southern end of Horton St."

Cr Taylor said council had gone to great lengths to retain and protect as many existing trees as possible near the works, particularly the large blue-gums downstream of South St and replacement trees

would be planted in the East Cr corridor to compensate for the small number of trees removed.

The project has been funded through a joint State and Commonwealth contribution of \$3 million. Council is contributing \$5 million to the project.

Local News

SEE MORE PHOTOS

See more photos

See more photos

See more photos

See more photos

See more photos

See more photos

See more photos

See more photos

See more photos

See more photos

See more photos

See more photos

See more photos

See more photos

See more photos

See more photos

See more photos

See more photos

See more photos

See more photos

See more photos

See more photos

See more photos

See more photos

See more photos

See more photos

See more photos



AGREED: Mayor Bill Ludwig speaks with Deputy Premier Jackie Trad. PHOTO CONTRIBUTED

Capricorn Coast Mirror, 20 May 2015

Repairs completed

Bridge reopens

HODGSON Creek Bridge on the Clifton-Pittsworth Rd reopened to traffic late last week right on schedule.

Toowoomba Regional Council infrastructure services committee chair Cr Carol Taylor said the works included repairs to the bridge abutments and reconstruction of the approaching road pavement.

"Council thanks residents in the area for their patience and co-operation during the road closure," Cr Taylor said.

"The bridge closure was necessary to ensure work was completed as quickly as possible."

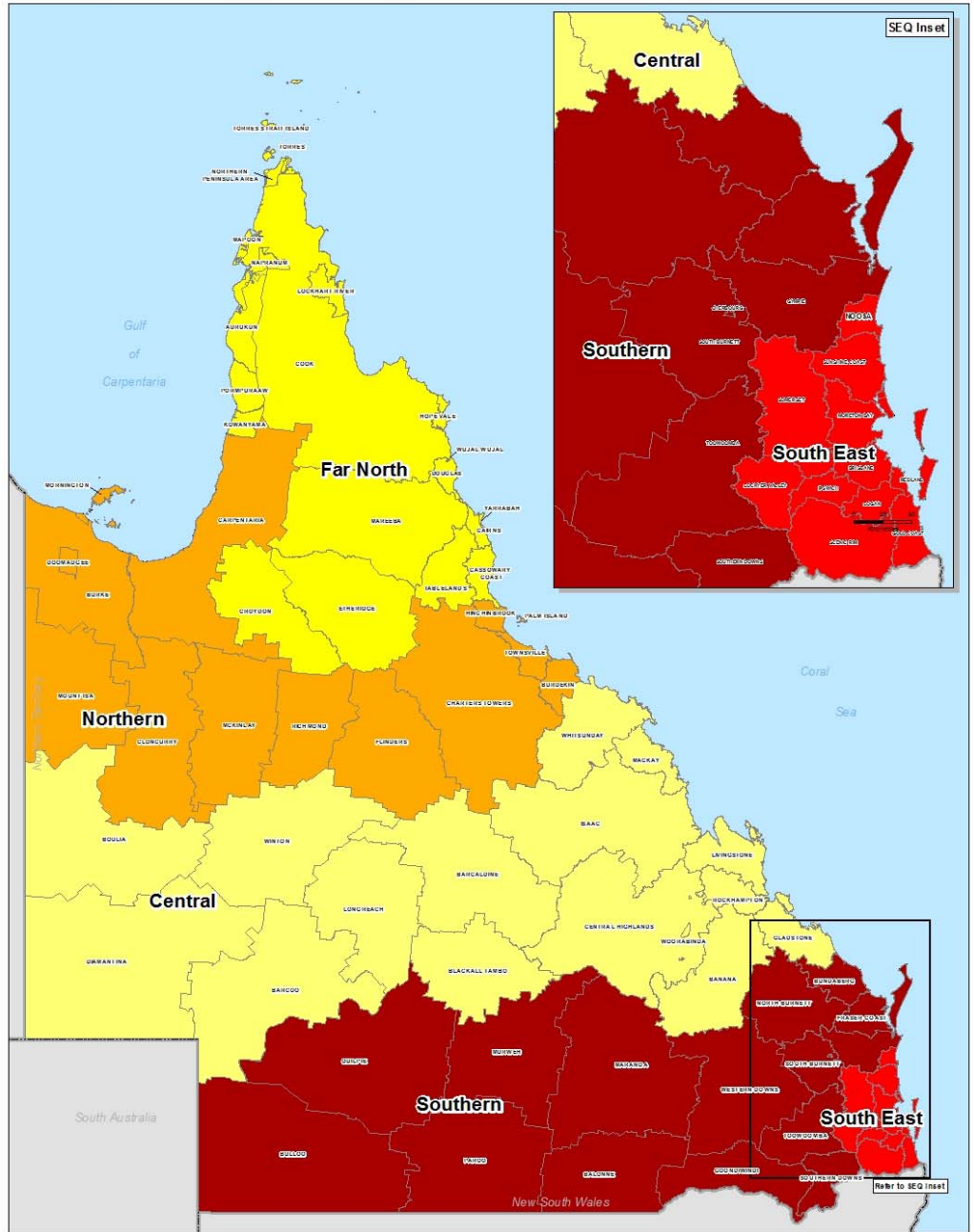
These works were funded by the Natural Disaster Relief and Recovery Arrangements (NDRRA) with 75% of funding coming from the federal government and 25% from the state government. Toowoomba Regional Council also contributed funding.

Toowoomba Chronicle, 5 May 2015

Appendices

Appendix A: Local Government Areas by Region

Region	Local Government Areas (LGA's)		
Far North Queensland (FNQ)	ASC	Aurukun Shire Council	
	CRC	Cairns Regional Council	
	CCRC	Cassowary Coast Regional Council	
	CoSC	Cook Shire Council	
	CfSC	Croydon Shire Council	
	DSC	Douglas Shire Council	
	ESC	Etheridge Shire Council	
	HVASC	Hope Vale Aboriginal Shire Council	
	KASC	Kowanyama Aboriginal Shire Council	
	LRASC	Lockhart River Aboriginal Shire Council	
	MASC	Mapoon Aboriginal Shire Council	
	MbaSC	Mareeba Shire Council	
	NASC	Napranum Aboriginal Shire Council	
	NPARC	Northern Peninsula Area Regional Council	
	PASC	Pormpuraaw Aboriginal Shire Council	
	TRC	Tablelands Regional Council	
	TSC	Torres Shire Council	
	TSIRC	Torres Strait Island Regional Council	
WWASC	Wujal Wujal Aboriginal Shire Council		
YASC	Yarrabah Aboriginal Shire Council		
North Queensland (NQ)	BrdSC	Burdekin Shire Council	
	BrkSC	Burke Shire Council	
	CSC	Carpentaria Shire Council	
	CTRC	Charters Towers Regional Council	
	CISC	Cloncurry Shire Council	
	DASC	Doomadgee Aboriginal Shire Council	
	FSC	Flinders Shire Council	
	HSC	Hinchinbrook Shire Council	
	McSC	McKinlay Shire Council	
	MoSC	Morrington Shire Council	
	MICC	Mount Isa City Council	
	PIASC	Palm Island Aboriginal Shire Council	
	RSC	Richmond Shire Council	
	TCC	Townsville City Council	
	Central Queensland (CQ)	BanSC	Banana Shire Council
		BarRC	Barcaldine Regional Council
		BarSC	Barcoo Shire Council
		BTRC	Blackall-Tambo Regional Council
BOSC		Boulia Shire Council	
CHRC		Central Highlands Regional Council	
DSC		Diamantina Shire Council	
GSC		Gladstone Regional Council	
IRC		Isaac Regional Council	
LSC		Livingstone Shire Council	
LRC		Longreach Regional Council	
MacRC		Mackay Regional Council	
RRC		Rockhampton Regional Council	
WRC		Whitsunday Regional Council	
WSC		Winton Shire Council	
WASC		Woorabinda Aboriginal Shire Council	
Southern Queensland (SQ)		BaSC	Balonne Shire Council
		BSC	Bulloo Shire Council
	BRC	Bundaberg Regional Council	
	CASC	Cherbourg Aboriginal Shire Council	
	FCRC	Fraser Coast Regional Council	
	GoRC	Goondiwindi Regional Council	
	GRC	Gympie Regional Council	
	MarRC	Maranoa Regional Council	
	MuSC	Murweh Shire Council	
	NBRC	North Burnett Regional Council	
	PSC	Paroo Shire Council	
	QSC	Quilpie Shire Council	
	SBRC	South Burnett Regional Council	
	SDRC	Southern Downs Regional Council	
ToRC	Toowoomba Regional Council		
WDRC	Western Downs Regional Council		
South East Queensland (SEQ)	BCC	Brisbane City Council	
	GCCC	Gold Coast City Council	
	ICC	Ipswich City Council	
	LVRC	Lockyer Valley Regional Council	
	LCC	Logan City Council	
	MBRC	Moreton Bay Regional Council	
	NSC	Noosa Shire Council	
	RCC	Redland City Council	
SRRC	Scenic Rim Regional Council		
SRC	Somerset Regional Council		
SCRC	Sunshine Coast Regional Council		



Disclaimer:
This map has been prepared by the Dept of Community Safety.
Other users must verify that the data is accurate and suitable for their purposes.
The Queensland Reconstruction Authority does not warrant the accuracy or reliability of the data or the use of or reliance on this map.

Local Government Areas and QldRA Reporting Regions

Scale at A4: 1:6,700,000

Legend

- Far North Queensland
- North Queensland
- Central Queensland
- Southern Queensland
- South East Queensland
- Local Government Areas

As at 5/02/2014

