

**QUEENSLAND RECONSTRUCTION AUTHORITY**

# **Monthly Report**

**August 2016**

A decorative graphic in the bottom right corner of the page, consisting of several overlapping, radiating lines in various shades of maroon and red, creating a sense of depth and movement.

## **Document details:**

Security classification	Public
Date of review of security classification	August 2016
Authority	Queensland Reconstruction Authority
Author	Chief Executive Officer
Document status	Final
Version	1.0

## **Contact for Enquiries:**

*All enquiries regarding this document should be directed to:*

*Queensland Reconstruction Authority*

*Phone the call centre - **1800 110 841***

## **Mailing Address**

Queensland Reconstruction Authority

PO Box 15428

City East Q 4002

*Alternatively, contact the Queensland Reconstruction Authority by emailing [info@qldra.org.au](mailto:info@qldra.org.au)*

## **Licence**

*This material is licensed under a [Creative Commons - Attribution 3.0 Australia licence](#).*



*The Queensland Reconstruction Authority requests attribution in the following manner:*

© The State of Queensland (Queensland Reconstruction Authority) 2011-2015

## **Information security**

*This document has been classified using the [Queensland Government Information Security Classification Framework \(QGISCF\)](#) as PUBLIC and will be managed according to the requirements of the QGISCF.*

---

*Message from the Chief Executive Officer*

Major General Richard Wilson AO (Ret'd)  
Chairman  
Queensland Reconstruction Authority

Dear Major General Wilson

It is with pleasure that I present the August 2016 Monthly Report – the 66th report to the Board of the Queensland Reconstruction Authority (QRA).

QRA was established under the *Queensland Reconstruction Authority Act 2011* (the Act) following the unprecedented natural disasters that struck Queensland over the summer months of 2010-11. The role of QRA has since been extended a number of times to cover historical and continuing disaster events in Queensland. In June 2015, QRA's operations were made permanent, enabling it to continue the work of helping Queensland communities effectively and efficiently recover from the impacts of natural disasters.

QRA is charged with managing and coordinating the Government's program of infrastructure renewal and recovery within disaster-affected communities, with a focus on working with our State and local government partners to deliver best practice expenditure of public reconstruction funds. QRA is now also the State's lead agency responsible for disaster recovery, resilience and mitigation policy. In this role, QRA is working collaboratively with other agencies and key stakeholders to improve risk reduction and disaster preparedness.

QRA is currently working with delivery agents to gather and assess completion documentation to close out 2014 event and other works for acquittal in the next claim due to the Commonwealth in early 2017. QRA is also working with delivery agents to progress delivery of the 2015 event program and provide advice and assistance with damage assessments and submission preparation for the more recent 2016 events. In July, one additional event was activated for Natural Disaster Relief and Recovery Arrangements (NDRRA) financial assistance - *Central Western Queensland Flooding, 13-19 June 2016*.

The August report is provided following completion of QRA's June 2016 review of damage estimates. The review is undertaken on a regular basis and involved a complete review of the active NDRRA program of each local government authority (LGA) and State agency. The review included updated estimates for the 2015 and 2016 events, which are in the delivery phase, and preliminary final costs for the 2014 event works, which were due to be completed by 30 June 2016.

Following completion of the June 2016 estimates review, QRA's program of works in the delivery phase comprises 17 events from the 2015 and 2016 disaster periods worth an estimated \$677 million. Of this, \$478 million has been approved and additional submissions worth \$117 million are with QRA and under investigation or awaiting additional information. \$233 million (34%) of works in relation to the delivery program has been reported to QRA at 30 June 2016 as in progress or delivered. QRA is also managing the close out of an estimated \$855 million works from the 2013, 2014, 2015 and 2016 disaster periods that will be acquitted in claims to the Commonwealth over the next three financial years.

With QRA now the lead agency responsible for disaster recovery, resilience and mitigation policy in Queensland, the August report provides an update on activities that QRA is engaged in collaboratively with other agencies and key stakeholders to improve risk reduction and disaster preparedness across Queensland.

The August report also highlights the completion of Gympie Regional Council's 2015 event NDRRA restoration and Betterment programs more than a year ahead of the Commonwealth's 30 June 2017 deadline and the completion of Pormpuraaw Aboriginal Shire Council's 2014 event reconstruction program, the largest in its history. The report also profiles how the Queensland Department of Transport and Main Roads (TMR) is improving community outcomes following natural disasters by looking for opportunities to deliver complementary works in conjunction with some restoration works.

I commend the report to you and recommend its release to the Minister and the public pursuant to Section 41 of the *Queensland Reconstruction Authority Act 2011*.

Yours sincerely



Brendan Moon  
Chief Executive Officer  
Queensland Reconstruction Authority

# Contents

<b>1.0 Introduction</b>	<b>1</b>
1.1 Purpose	2
1.2 Timing	2
<b>2.0 Disaster Assistance</b>	<b>3</b>
2.1 Queensland Disaster Assistance Framework	4
2.2 Events and relief measures managed by QRA	5
2.3 Additional assistance measures	7
<b>3.0 Program Status</b>	<b>8</b>
3.1 Recent developments	9
3.2 Program status	9
3.3 State-controlled roads and highways	10
3.4 Additional assistance measures	11
3.5 Program spotlights	12
<b>4.0 Communications</b>	<b>17</b>
4.1 Communicating progress	18
4.2 Media reports	19
<b><u>Appendices</u></b>	
Appendix A: Local Government Areas by Region	21

**Section one:**  
**Introduction**



# 1.0 Introduction

## 1.1 Purpose

The Queensland Reconstruction Authority (QRA) was established on 21 February 2011 under the *Queensland Reconstruction Act 2011* (the Act) following the extensive series of natural disasters that impacted Queensland over the summer of 2010-11.

QRA's mission is **to reconnect, rebuild and improve Queensland communities and its economy.**

QRA is charged with managing and coordinating the Government's program of infrastructure renewal and recovery within disaster-affected communities, with a focus on working with our State and local government partners to deliver best practice expenditure of public reconstruction funds.

QRA is also the State's lead agency responsible for disaster recovery, resilience and mitigation policy. In this role QRA is working collaboratively with other agencies and key stakeholders to improve risk reduction and disaster preparedness.

Initially established for a two-year period, QRA was extended a number of times as its role expanded to cover historical and continuing disaster events. In June 2015, QRA was made permanent, enabling it to continue the critical work of helping Queensland communities effectively and efficiently recover from the impacts of natural disasters.

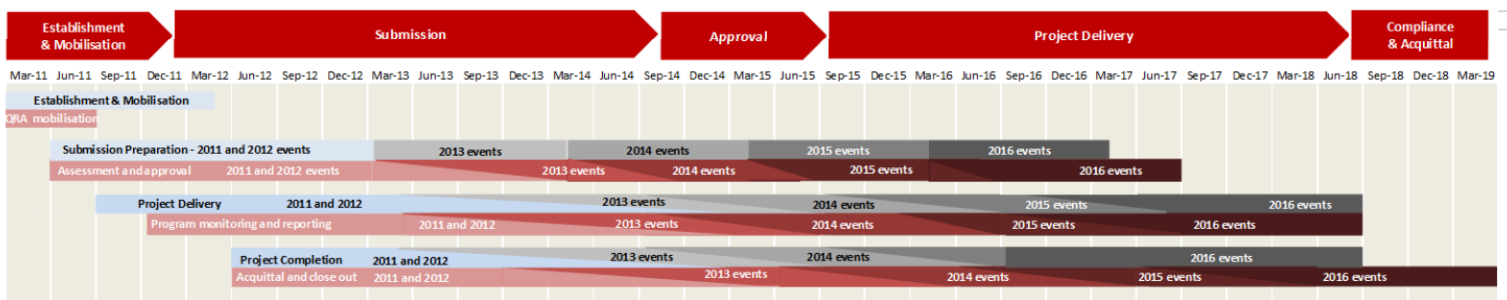
As part of its role, QRA administers the rebuilding program for Natural Disaster Relief and Recovery Arrangements (NDRRA) activated disaster events and is responsible for the acquittal of NDRRA funding including Counter Disaster Operations, Emergent Works, Restoration of Essential Public Assets, Category C and Category D assistance to State Departments and Agencies (SDA) and Local Government Authorities (LGA). Since its establishment in February 2011, QRA has managed and coordinated the infrastructure reconstruction and recovery for 60 disaster events activated for NDRRA relief measures.

## 1.2 Timing

The Commonwealth NDRRA Determination imposes time limits for the delivery and acquittal of works.

The Determination provides for a time limit of two financial years after a disaster to deliver reconstruction works and a further nine months after the end of the financial year in which the works were completed in order to acquit the works. NDRRA funding is formally acquitted through the annual submission of a financial statement to the Commonwealth comprising claims for financial assistance in respect of state NDRRA expenditure incurred on eligible disasters in the preceding financial year (Commonwealth Claim). Lodgement of Commonwealth Claims is required to secure reimbursement of the Commonwealth's share of eligible expenditure.

As QRA is managing a series of events that occurred across a number of financial years, QRA's program is spread across various stages in the delivery and acquittal phases.



Works for 26 disaster events activated for the 2014, 2015 and 2016 event periods are currently in the delivery and acquittal phases.

On 24 March 2016, QRA submitted the audited claim for NDRRA financial assistance to acquit more than \$1.6 billion of eligible state expenditure arising on works completed by 20 June 2015 in relation to the 2011, 2012, 2013, 2014 and 2015 event programs of work.

With the deadline now passed for completion of the majority of 2014 events works, QRA is working with delivery agents to gather and assess completion documentation to close out 2014 event and other works for acquittal in the next claim due to the Commonwealth in early 2017. QRA is also working with delivery agents to progress delivery of the 2015 event program and provide advice and assistance with damage assessments and submission preparation for the more recent 2016 events.

QRA is also continuing to participate in consultations with the Commonwealth and other jurisdictions in relation to potential natural disaster funding reforms. The Commonwealth is investigating a model to provide natural disaster recovery funding to states and territories based on upfront damage assessments and estimated reconstruction costs. At the same time, QRA is facilitating the Commonwealth's review of seven Commonwealth Claims lodged by Queensland dating back to 2008-09 that have not yet been acquitted by the Commonwealth.

**Section two:**  
**Disaster Assistance**

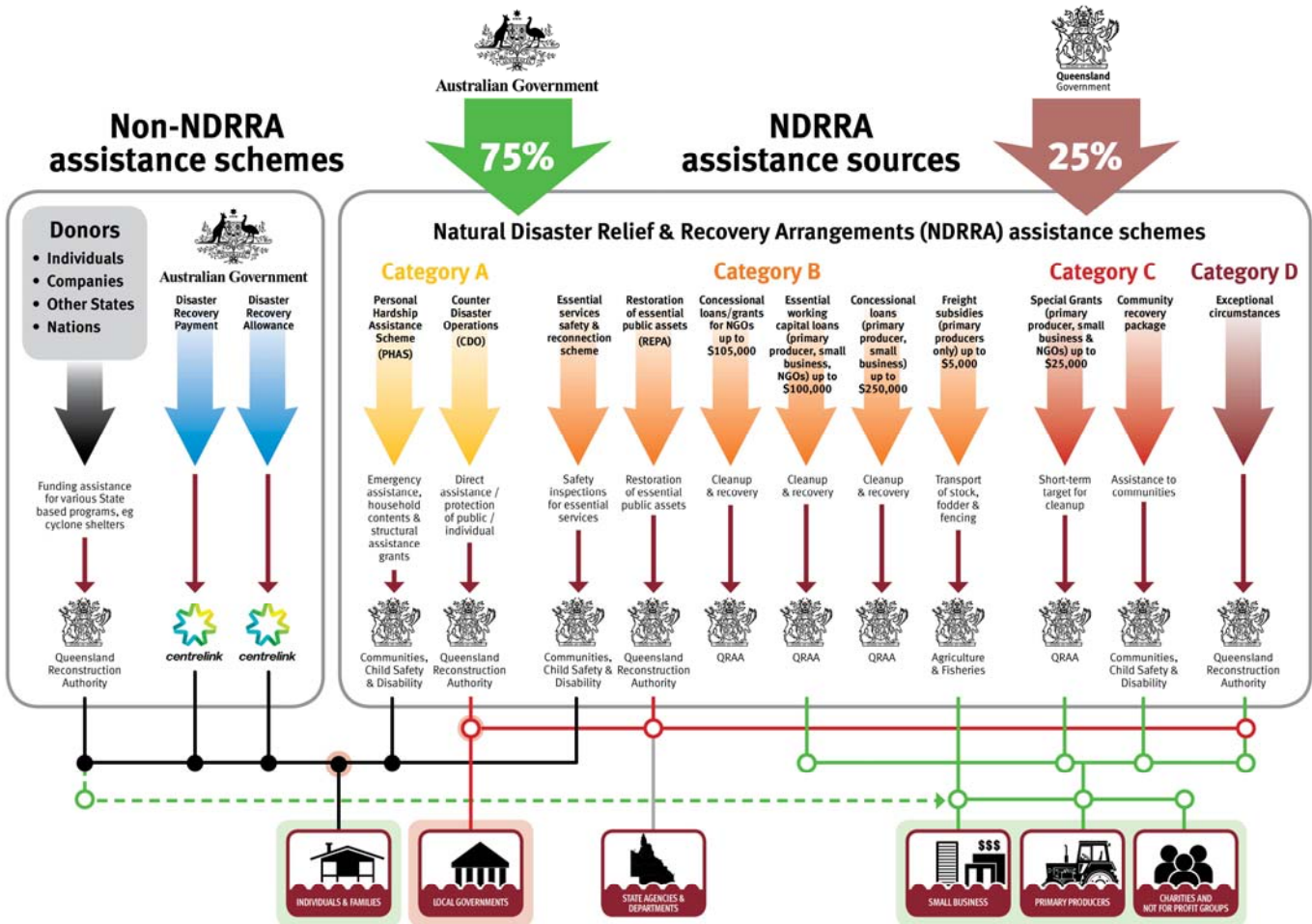


## 2.0 Disaster Assistance

### 2.1 Queensland Disaster Assistance Framework

The available Queensland Disaster Assistance schemes are separated between NDRRA (jointly funded by the Commonwealth and State governments) and non-NDRRA funding schemes. The diagram below indicates the different elements of assistance available and how each element operates.

Figure 2.1.1 Queensland Disaster Assistance Framework



Elements of the assistance schemes are delivered by State agencies, however all NDRRA assistance sources (and elements of the non-NDRRA assistance schemes) are administered by QRA for historical and continuing disaster events in Queensland.

#### Disaster events managed by QRA

The list of the activated disaster events managed by QRA are set out in **Section 2.2** and can also be found on [www.disaster.qld.gov.au](http://www.disaster.qld.gov.au).

This report includes references to event periods described as follows:

- **2016 events:** Activated disaster events managed by QRA occurring in the financial year ending **30 June 2016**
- **2015 events:** Activated disaster events managed by QRA which occurred in the financial year ended **30 June 2015**
- **2014 events:** Activated disaster events managed by QRA which occurred in the financial year ended **30 June 2014**
- **2013 events:** Activated disaster events managed by QRA which occurred in the financial year ended **30 June 2013**, including Tropical Cyclone Oswald and associated rainfall and flooding (January 2013)
- **2012 events:** Activated disaster events managed by QRA which occurred in the financial year ended **30 June 2012**
- **2011 events:** Activated disaster events managed by QRA which occurred in the financial year ended **30 June 2011**, including Tropical Cyclone Yasi and Queensland flooding (December 2010 to February 2011).



## 2.2 Events and relief measures managed by QRA

QRA has responsibility to administer NDRRA relief measures for historical and continuing disaster events in Queensland.

Since its establishment in February 2011, QRA has managed and coordinated the infrastructure reconstruction and recovery for 60 disaster events activated for NDRRA relief measures. Of these, 34 events are complete, having been delivered, closed out and acquitted to the Commonwealth in audited claims.

Works for 17 disasters from the 2015 and 2016 event periods are currently in the delivery phase<sup>1</sup> and completed works from a further 9 events from the 2014 event period are also in the acquittal phase<sup>1</sup>.

During July, an additional event was activated for NDRRA relief measure - *Central Western Queensland Flooding, 13-19 June 2016*.

The maps opposite show the LGAs activated for relief measures under NDRRA for the 2011 to 2016 event periods managed by QRA.

### 2016 events

*(Works to be delivered by 30 June 2018, with final acquittal due by March 2019)*

- Central Western Queensland Flooding, 13-19 June 2016
- South West Queensland Floods, 7-9 May 2016
- Far North and North West Queensland Tropical Low, 14-18 March 2016
- Western Queensland Trough, 7-11 March 2016
- Central Coast Surface Trough, 4-8 February 2016
- Central Western Queensland Heavy Rainfall & Flooding, 2-4 February 2016
- Gulf of Carpentaria Monsoon Trough – 20-31 December 2015
- Fernvale Severe Storm, 27 October 2015.

### 2015 events

*(Works to be delivered by 30 June 2017, with final acquittal due by March 2018)*

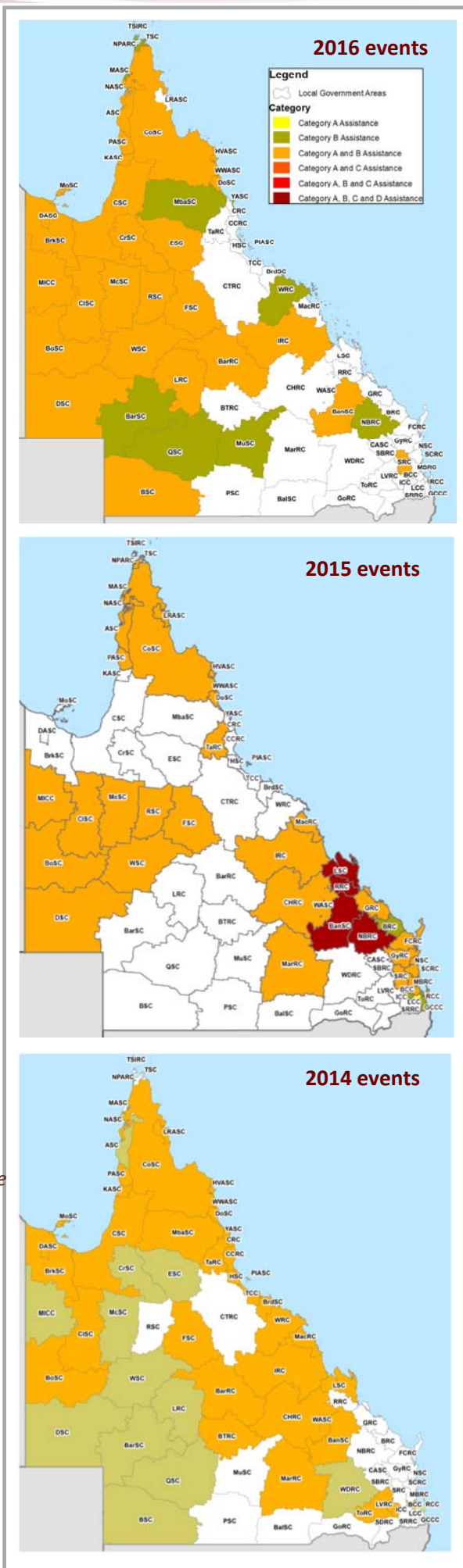
- South East Queensland Low, 30 April – 1 May 2015
- Tropical Cyclone Nathan and associated rainfall & flooding, 11-15 March 2015
- Severe Tropical Cyclone Marcia and South East Queensland Trough - 19 to 22 February 2015
- Tropical Cyclone Lam, 15-18 February 2015
- North Queensland Severe Weather and Flooding - 8 to 15 February 2015
- Central Eastern Queensland Heavy Rainfall and Flooding - 21 to 29 January 2015
- Western Queensland Heavy Rainfall and Flooding - 5 to 18 January 2015
- Central Queensland Heavy Rainfall and Flooding - 8 to 14 December 2014
- Brisbane Severe Thunderstorm - 27 December 2014.

### 2014 events

*Delivery of works complete with final acquittal due by March 2017, other than three LGA programs that received extensions of time for delivery)*

- Tropical Cyclone Ita & Associated Rainfall & Flooding, 11-14 April 2014
- Tropical Cyclone Gillian - 10 to 11 March 2014
- Central Coast & Southern Queensland Trough, 26-30 March 2014
- Central & Western Queensland Flooding & Rainfall, 18-28 February 2014
- North East Queensland Monsoonal Rainfall & Flooding - 7 to 9 February 2014
- Tropical Cyclone Fletcher, commencing 2 February 2014
- Far North Queensland Peninsula Flooding (27-31 January 2014)
- Tropical Cyclone Dylan, 31 January 2014
- North Stradbroke Island Fires, commencing 29 December 2013.

1. The NDRRA Determination imposes a time limit of two financial years after a disaster to deliver reconstruction works (delivery phase) and a further nine months to acquit completed works (acquittal phase) through lodgement of an annual claim to the Commonwealth. Following extension of time approvals, a number of projects from the 2013 and 2014 event period are still in delivery and acquittal phases.



## 2.2 Events managed by QRA (cont.)

### 2013 events

*(Delivery and acquittal of works complete other than three projects that received extensions of time for delivery, with acquittal due by March 2017)*

- South West Queensland Wildfires, 21 December 2012
- Far Northern Queensland Bushfires, late October - December 2012
- Tropical Cyclone Oswald & Associated Rainfall & Flooding, 21-29 January 2013<sup>#</sup>
- Longreach Flood, 18 February 2013
- Central & Southern Queensland Low, 25 February - 5 March 2013.

### 2012 events

*(Delivery and acquittal of works complete)*

- Queensland Bushfires, August to October 2011
- Localised Heavy Rainfall Northern Queensland, October 2011
- Southern Queensland Flooding, December to December 2011
- South East Queensland Heavy Rainfall and flooding, 23- 26 January 2012
- Western Queensland Tropical Low, January - February 2012
- Far Northern Queensland Tropical Low, 3-4 February 2012
- North Coast Queensland Storms and flooding and East Coast Hybrid Low, 24 February - 7 March 2012
- Northern & Far Northern Queensland Heavy Rainfall & flooding, 15 Mar 2012
- East Coast Low, 22 March 2012.

### 2011 events

*(Delivery and acquittal of works complete)*

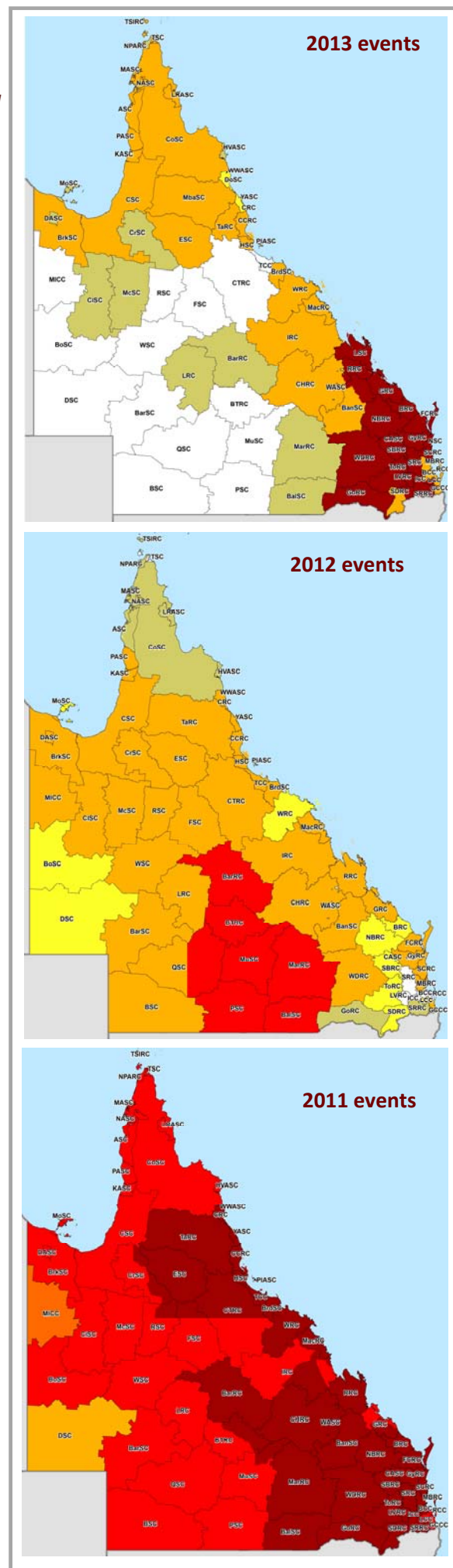
- South West Flooding, April 2011
- Queensland Monsoonal Flooding Event, 28 February 2011
- Severe Tropical Cyclone Yasi on 2 February 2011
- Queensland Flooding and Tropical Cyclones Tasha and Anthony, December 2010 to February 2011.

### 2007-2010 events managed by QRA

*(Delivery and acquittal of works complete)*

- Queensland Monsoonal Flooding and Tropical Cyclones Olga, Neville, Ului and Paul, January to April 2010
- Northern, Central and South West Queensland Flooding, 22 December 2009 to 8 January 2010
- South West Flooding, 20 – 25 December 2009
- 2010 South East Queensland Flooding, 9-12 October 2010.
- Queensland Bushfires, September – October 2009
- South West Queensland Low and Associated Flooding, September 2010
- South East Queensland Low, May 2009
- Queensland Monsoonal flooding and Tropical Cyclone Charlotte and Ellie, January - February 2009
- Queensland storms and associated flooding, 16-22 December 2008
- South West Queensland flooding, June 2008
- Queensland Monsoonal flooding, February March 2008
- Queensland Monsoonal flooding, January 2008
- South East Queensland East Coast Low, 27 December 2007 - 7 January 2008
- Central Western Queensland storms and flooding, 22-30 December 2007
- South West Queensland storms and flooding, 23-30 December 2007
- South East and North Coast Queensland East Coast Low, August 2007.

*# Three 2013 Event Betterment projects received extensions of time for delivery, with final acquittal due by 31 March 2017. All other 2013 event s have completed delivery and acquittal phases.*



## 2.3 Additional assistance measures

The State Government in conjunction with the Commonwealth have activated a range of jointly-funded Category C, Category D and other relief measures to alleviate distress due to the impact of the 2015, 2014, 2013 and 2011 events.

Measures relevant to the 2014 and 2015 events that are still in the delivery and acquittal phase are summarised as follows:

### 2015 events (Tropical Cyclone Marcia)

- **Betterment fund - \$20 million** - available for the restoration or replacement of non-State owned assets to a more disaster resilient standard than their pre-disaster standard. The intent of betterment is to increase the resilience of communities to natural disasters, while at the same time reducing future expenditure on asset restoration, reducing incidents, injuries and fatalities and improving asset utility during and after disaster events.
- **Clean-up and restoration of national parks, beaches and recreational assets - \$6 million** - funding to clean-up and repair damaged community infrastructure such as picnic areas, walking tracks and associated amenities.
- **Green waste clean-up - \$1 million** - assist LGAs in the most heavily impacted areas of Rockhampton, Livingstone, Banana and North Burnett with the costs of extensive green waste clean-up and removal activities from private properties and businesses.
- **Industry Recovery Officers - \$750,000** - Placement of Industry Recovery Officers to provide recovery information and support to primary producers in the worst affected areas.
- **Community Recovery Package (Category C) - \$5.1 million** - Funding to engage community development officers and personal support managers and case workers to aid the recovery of severely affected communities in the local government areas of Rockhampton, Livingstone, Banana, North Burnett and part of Gladstone.

### 2014 events

- **\$1.6 million** funding for the additional costs incurred by Cook Shire Council for disaster reconstruction work on the Peninsula Road Network.

### Other active Category D measures

- The State Government and Commonwealth have agreed to an extended **Day Labour** Trial for the 2014, 2015 and 2016 events, which enables councils to deliver restoration works with their own workforce on condition that they provide evidence of savings in both time and cost
- Three projects funded under the **\$80 million Category D Betterment fund** in relation to **2013 Events** received extensions of time for delivery beyond 30 June 2015.

**Section three:**

# **Program Status**



### 3.0 Program Status

#### 3.1 Recent developments

On 30 June 2016, the deadline passed for councils and state agencies to complete works from Tropical Cyclone Ita and other 2014 events (other than for four drought affected councils that have received extensions of time). Whilst formal reporting of completion will occur over coming months, councils and state agencies have consistently indicated that works were completed on time.

In July, an additional event has been activated for NDRRA financial assistance - *Central Western Queensland Flooding, 13-19 June 2016*.

During July, QRA completed its regular review of damage estimates, which involved a complete review of the active program of works in the delivery and/or acquittal phases for each LGA and State agency.

QRA is currently working with delivery agents to gather and assess completion documentation to close out 2014 event and other works for acquittal in the next claim due to the Commonwealth in early 2017. QRA is also working with delivery agents to progress delivery of the 2015 event program and provide advice and assistance with damage assessments and submission preparation for the more recent 2016 events.

Following the Commonwealth’s decision to defer \$1 billion funding due to the State on the 2014-15 Claim, QRA is continuing to actively engage with the Commonwealth to progress its review of the claim and release of the funding in a timely manner.

#### 3.2 Program status

Following completion of the June 2016 NDRRA estimates review process, the value of the total NDRRA program of works managed by QRA since its establishment has been revised to \$13.29 billion. Of this, \$12.3 billion of works from the 2009-10, 2011, 2012 and 2013 events have been finalised (delivered and acquitted) with the remaining works for the 2014, 2015 and 2016 event years in the active delivery and/or acquittal phases.

QRA is managing the assessment of submissions and delivery of works with an estimated value of \$677 million for the 2015 Events and 2016 Events (**Delivery Program**) and an **Acquittal Program** worth \$855 million, comprising the remaining works from the 2013 Events, 2014 Events, 2015 Events and 2016 Events that are yet to be acquitted in claims to the Commonwealth.

##### Delivery Program status

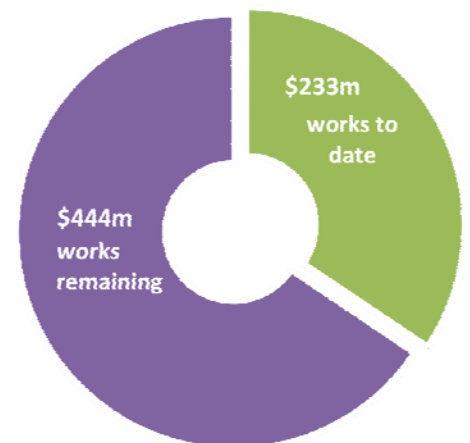
Since the last report, QRA’s program has progressed as follows:

- A cumulative value of \$754 million in submissions have been received in relation to the Delivery Program, an increase of \$44 million since last month
- A cumulative total of \$478 million has been approved, an increase of \$23 million since last month. Additional submissions worth \$117 million are with QRA and under investigation or awaiting additional information
- A cumulative value of \$233 million (34 percent) of the Delivery Program has been reported to QRA at 30 June 2016 as in progress or delivered.

The 2015 and 2016 Event works are due for completion by 30 June 2017 and 30 June 2018 respectively.

The graph below shows the monthly reported expenditure and forecasted monthly costs to completion at 30 June 2016 on a combined basis for the Delivery Program (2015 and 2016 Events).

##### Delivery Program (2015 to 2016 Events) progress



(Source: The Authority, 31 July 2016)

### 3.2 Program status (cont.)

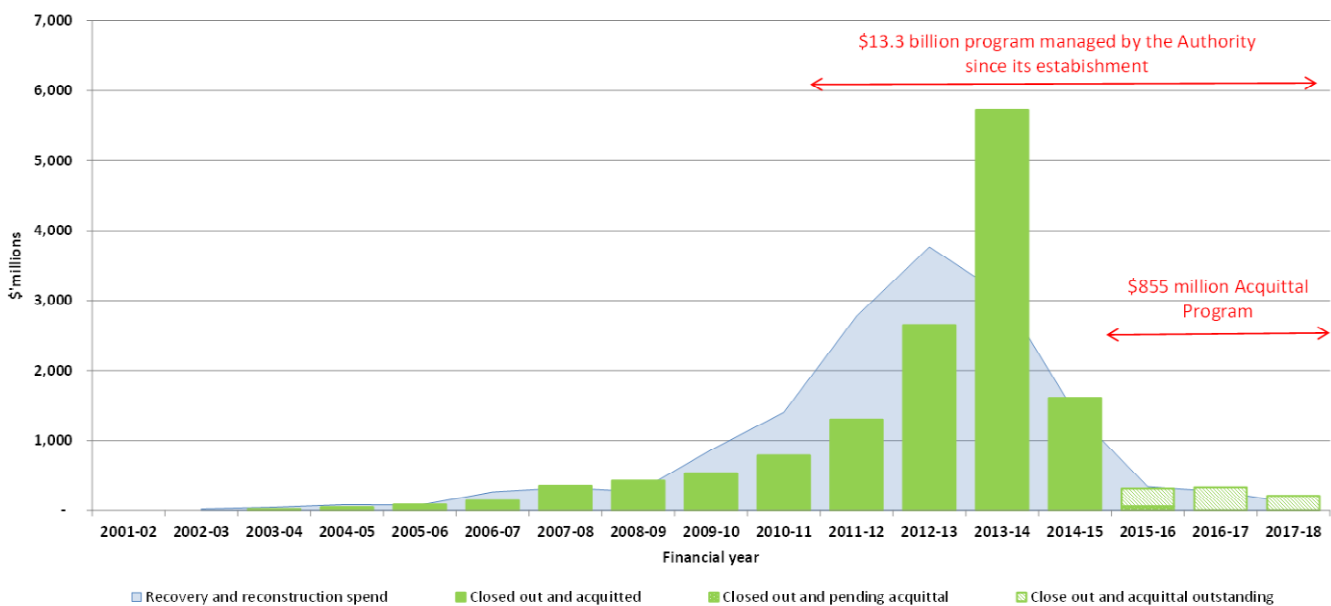
#### Acquittal Program status

The 2014-15 Commonwealth Claim was submitted to the Commonwealth on 24 March 2016. The claim acquitted \$1.6 billion of works completed in the year ended 30 June 2015. On acceptance by the Commonwealth, the claim will secure approximately \$1.1 billion of funding to the State.

Through the Federal Budget in May 2016, the Commonwealth indicated that it will defer payment of the funding due on the 2014-15 Commonwealth Claim until it has undertaken assurance activities over the claim. QRA is actively engaging with the Commonwealth to progress the review and release of the funding in a timely manner.

The next Commonwealth Claim is due to be submitted to the Commonwealth by 31 March 2017 to acquit works completed up to 30 June 2016. On receipt of claim documentation from delivery agents, QRA will progressively close-out submissions for the claim through to December 2016 prior to audit review in early 2017. The 2015-16 Commonwealth Claim will include final works from the 2014 events and those components of the 2015 and 2016 works that were completed by 30 June 2016.

The following graph shows the historical and projected acquittal profile for Queensland as per Commonwealth Claims submitted for the 2001-02 to 2014-15 financial years and Commonwealth Claims preliminarily expected to be submitted for 2015-16 to 2017-18 in order to finalise acquittal of the \$855 million remaining in the Acquittal Program.



(Source: QRA, 31 July 2016)

### 3.3 State-controlled roads and highways

The Queensland Department of Transport and Main Roads (TMR) is managing the recovery and reconstruction works of Queensland's integrated transport system for the 2014, 2015 and 2016 event works currently in the delivery phase through its Program Delivery and Operations Branch.

The transport system includes state-controlled roads, ports, navigation aids and the rail network.

#### Current status

- Reconstruction on all 102 recovery and reconstruction projects in the 2014 events program was completed in December 2015, six months ahead of the funding deadline. Works included 214km of road reconstruction, repairs to 52 structures including bridges and culverts, and 56 locations requiring earthworks and batter repairs.
- TMR is currently targeting to complete the majority of its 2015 event works by 31 December 2016, six months before the funding deadline (weather permitting). All 112km of TMR's road reconstruction projects are now complete, with some bridge and other structure works remaining in delivery. During June 2016, construction started on three projects, including works on the Burnett Highway (Monto—Biloela) in the Fitzroy District, and construction was completed on 16 projects, including works on the Peninsula Development Road (Coen—Weipa).
- TMR districts are currently undertaking the assessment of damage to the state road network from the 2016 events following completion of emergent works to restore damaged state roads to a safe condition. A total of 7,338km of Queensland's state road network has been closed or had limited access as a result of the 2016 disaster events, including 1,386km affected by multiple events.

(Source: TMR, 30 June 2016)

### 3.4 Additional assistance measures

#### 2013 and 2015 Event Betterment Funds

The \$80 million 2013 Event Betterment fund and \$20 million 2015 Event Betterment fund are Category D relief measures available to those LGAs declared for NDRRA assistance as a result of the 2013 cyclone and flood events and for Tropical Cyclone Marcia respectively. Betterment funding is available for the restoration or replacement of essential public assets to a more disaster resilient standard than existed pre-disaster.

Where a damaged asset is approved for betterment, the normal cost of restoring or replacing the asset to its pre-disaster standard is funded under Category B NDRRA and the incremental cost to 'better' the asset to a more disaster-resilient standard is funded by a capped allocation from the relevant Betterment fund and Council contributions.

Betterment funding is allocated on the basis of the estimated cost of the approved projects. Should the betterment component of a project be delivered for a cost below the capped allocation, then the savings will be returned to the Betterment fund for allocation to other eligible projects, where possible. The current status of the 2013 and 2015 Event Betterment Funds is summarised as follows:

2013 Event Betterment Fund	2015 Event Betterment Fund
<ul style="list-style-type: none"> <li>The 2013 Event Betterment Fund was allocated to 232 approved projects across 35 LGAs to improve the resilience of infrastructure to natural disasters following the 2013 events.</li> <li>Betterment projects include improved bridges, floodways, culverts, levees, water treatment plants and numerous roads across Queensland.</li> <li>All works were completed by the deadline of 30 June 2015 other than three betterment projects, which received extensions of time due to excessive rainfall and other factors: <ul style="list-style-type: none"> <li>Aroona Road (Central Highlands)</li> <li>Boolburra Edungalba Road (Central Highlands)</li> <li>Booyal Crossing Road (Bundaberg) (since completed).</li> </ul> </li> <li>In early May 2016, the Commonwealth agreed to a further extension for delivery of the remaining two betterment projects for Central Highlands Regional Council to 31 December 2016.</li> <li>On completion, the total cost of all 2013 Event betterment projects is estimated to be \$150 million, of which \$76 million will have been funded from the 2013 Event Betterment fund.</li> </ul>	<ul style="list-style-type: none"> <li>Expressions of Interest (EOI) were received for 190 projects across eight LGAs eligible for 2015 Event Betterment funding. The proposed projects principally comprise works to increase the resilience of damaged roads, culverts and floodways.</li> <li>Projects are being progressively prioritised to allocate the available pool of funding. Submissions for 127 projects have been received by QRA. Of these, 58 submissions with a total project value of \$39.6 million, including \$19.9 million Betterment funding, have been approved.</li> <li>Five Betterment projects were approved during July – Dry Weather Road, Hoffmans Road, Lake Mary Road and Peckovers Road (Livingstone Shire Council) and Kerrigan Street (Rockhampton Regional Council).</li> <li>Delivery of 2015 betterment works will be required by 30 June 2017 in accordance with NDRRA requirements.</li> </ul>

Package	Purpose	Status
<b>Clean-up and restoration of national parks, beaches and recreational assets (\$6 million)</b>	<ul style="list-style-type: none"> <li>To clean-up and repair community infrastructure such as picnic areas, walking tracks and associated amenities</li> </ul>	<ul style="list-style-type: none"> <li>QRA received EOIs from seven applicants for more than \$16 million</li> <li>Nine submissions worth \$6 million have been approved across the seven applicants fully allocating the program funding.</li> <li>QRA is monitoring the delivery of works. Any project savings identified may be considered for reallocation to eligible works.</li> </ul>
<b>Green waste clean-up (\$1 million)</b>	<ul style="list-style-type: none"> <li>To assist with the costs of green waste clean-up and removal activities from private properties and businesses</li> </ul>	<ul style="list-style-type: none"> <li>QRA received EOIs for more than \$1.7 million from three of the four LGAs eligible for funding allocation applicants</li> <li>Five submissions worth \$1 million have since been approved across the three applicants, fully allocating the program funding.</li> </ul>
<b>Industry Recovery Officers (\$750,000)</b>	<ul style="list-style-type: none"> <li>For placement of industry recovery officers (IRO) to provide recovery information and support to primary producers in the worst affected areas</li> </ul>	<ul style="list-style-type: none"> <li>Queensland Department of Agriculture and Fisheries (DAF) appointed the Queensland Farmers Federation (QFF) to manage the IRO program, with IRO officers located with Growcom, Queensland Dairyfarmers Organisation (QDO), AgForce and the Nursery and Gardening Industry Queensland (NGIQ)</li> <li>IROs are in delivery phase with a range of support activities delivered including workshops, field visits, soil testing and feed sample analysis work.</li> </ul>
<b>Community Recovery Package (\$5.1 million Category C)</b>	<ul style="list-style-type: none"> <li>To engage community development officers and personal support managers and case workers to aid the recovery of severely affected communities in Rockhampton, Livingstone, Banana, North Burnett and part of Gladstone LGAs.</li> </ul>	<ul style="list-style-type: none"> <li>Package is being managed by Queensland Department of Communities, Child Safety and Disability Services (DCCSDS)</li> <li>Livingstone, Gladstone, North Burnett and Banana councils and Rockhampton Uniting Care Community have commenced delivery of Community Development and Personal Support &amp; General Counselling programs across each of the five affected communities.</li> <li>Relationships Australia and Uniting Care Community are delivering Personal Support and General Counselling services, undertaken stakeholder and community engagement.</li> </ul>

(Source: QRA, DCCSDS and DAF; 31 May 2016)

## 3.5 Program spotlights

### Queensland Reconstruction Authority Queensland Flood Risk Management and Resilience

QRA is now the lead agency responsible for disaster recovery, resilience and mitigation policy following Cabinet's recent review of disaster management roles and responsibilities in Queensland.

In this role QRA is working collaboratively with other agencies and key stakeholders to improve risk reduction and disaster preparedness across Queensland and as such is engaged in a number of key activities.

#### Queensland Strategy for Disaster Resilience

One of QRA's immediate priorities is to update the Queensland Strategy for Disaster Resilience, which aims to make Queensland the most disaster-resilient state in Australia.

QRA is currently refreshing the Strategy, including the methodology to measure the progress and effects of resilience building initiatives that have been identified throughout Queensland. A key step has been QRA's engagement of Griffith University to gather national and international evidence on resilience to provide a solid base for a strategy incorporating international best practice.



#### Queensland Flood Resilience Coordination Committee (QFRCC)

The QFRCC contributes to the enhancement of community resilience, safety, mitigation and prevention capability across Queensland communities in relation to the impact of freshwater floods.

QRA Chairs the QFRCC and provides secretariat support to the committee.

The QFRCC comprises State Government agencies involved in flood risk management and resilience initiatives along with external members; the Local Government Association of Queensland, Bureau of Meteorology and the Insurance Council of Australia.

The QFRCC developed the State of Play Report and Action Plan to coordinate and manage implementation of the recommendations arising from:

- Queensland Floods Commission of Inquiry Final Report, March 2012
- reviews of disaster management and operations, particularly the Review of Flood Risk Management Arrangements, Performance Review of the Flood Warning Gauge Network in Queensland and the Callide Creek Flood Review Report and
- QAO Report 16: 2015-16, Flood resilience of River Catchments.

The *State of Play Report and Action Plan* sets out expected outcomes and outputs, 26 activities necessary to implement the recommendations, notional priorities as determined by the QFRCC, lead and support agencies, required resources and timings for delivery. It also details other actions to develop and finalise Flood Risk Management Policy.

The Disaster Management Interdepartmental Committee (DM IDC) will oversee the implementation of the Action Plan.

Regular monitoring of the implementation progress and effectiveness of the activities detailed in the Action Plan will be undertaken by the QFRCC.

The Report was submitted to the Queensland Disaster Management Committee (QDMC) for noting on 9 August 2016.

#### State Recovery Policy and Planning Coordinator (SRPPC)

QRA Chief Executive Officer Mr Brendan Moon has been appointed as the State Recovery Policy and Planning Coordinator (SRPPC) to assist in the rapid recovery of communities following natural disasters. In July 2016 the SRPPC role included:

- reviewing the State Recovery Guidelines and developing an interim State Disaster Recovery Plan for the 2016-17 disaster season
- scoping planning for the transfer from response to recovery phases (recovery transition plan)
- re-establishing networks with Functional Recovery Group (FRG) lead agencies - confirming each FRG's roles and responsibilities, points of contact and expected key tasks for the 2016-17 disaster season
- developing a position description for the role of Disaster Recovery Coordinator (DRC), with induction of DRCs planned for late 2016.



### 3.5 Program spotlights (continued)

## Queensland Reconstruction Authority Queensland Flood Risk Management and Resilience

### Brisbane River Catchment Flood Study (BRCFS)

The Brisbane River Catchment Flood Studies (BRCFS) are being undertaken in response to Recommendation 2.2 of the Queensland Floods Commission of Inquiry.

The study area includes the Brisbane River catchment, with a focus on areas downstream of Wivenhoe Dam including Lockyer Creek, the Bremer River and major tributaries such as Oxley Creek.

QRA chairs the BRCFS Steering Committee, whose membership comprises relevant Queensland Government agencies along with SEQWater, Brisbane City Council, Ipswich City Council, Somerset Regional Council and the Lockyer Valley Regional Council.

The BRCFS has four key phases, with Phase 1, a Hydrology Study Action Plan, completed in 2015. Phase 2, which is due for completion in early 2017, will provide an up-to-date, consistent, robust and agreed set of hydrologic and hydraulic models and flood hazard estimation for the Brisbane River catchment. It will provide much of the technical data about flood flow behaviour and characteristics across various sections of the entire Brisbane River catchment, and flood levels in lower Brisbane River and tributaries.

Phase 3 will deliver The Brisbane River Catchment Floodplain Management Strategy and the Strategic Floodplain Management Plan using the outputs from the modelling work and will be completed in December 2017. Phase 4 will be the development of the Floodplain Management Implementation Plans by December 2018.

In July 2016 a key activity of the BRCFS Steering Committee was a review of detailed hydraulics modelling results. Engagement with key stakeholders was also undertaken to establish a two day workshop held on 3 August to incorporate presentations from the four local government authorities, floodplain management plans and options to prevent or mitigate flood risk.



Flood gauge on swollen Fitzroy River -Feb 2015

### Flood Warning Gauge Network Review

In 2015, a state-wide Performance Review of the Queensland Flood Warning Gauge Network identified 215 priority locations that potentially required improved flood warning infrastructure.

The QRA, in conjunction with Queensland Fire & Emergency Services (QFES), Department of Infrastructure, Local Government & Planning (DILGP), Department of Natural Resources & Mines (DNRM) and the Bureau of Meteorology (BoM), is engaging with priority councils on proposed improvements to flood warning systems and to design improved networks.

The key outcomes from a more detailed consideration and redesign of flood warning systems are:

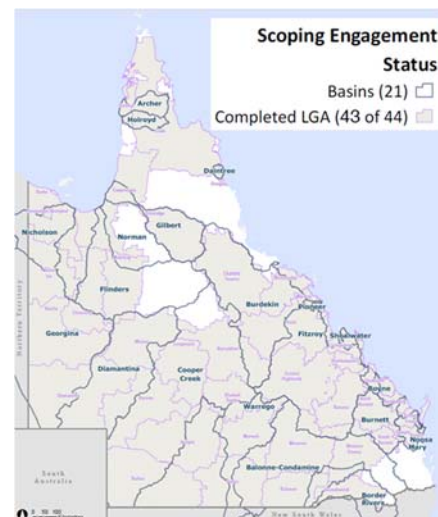
- real time (or close to real time) visibility of the data to relevant local councils, the State Disaster Coordination Centre, and BoM
- improvements to the flood warning gauge network are to be of a standard approved by BoM
- the related transmission of data is suitable for use by the BoM.

To date, officers from QRA, QFES and BoM have met with 43 councils identified as having locations within their local government areas that would benefit from upgrades or new installations to the flood gauge network.

After a successful meeting with the North West Regional Organisation of Councils in Winton in June 2016, QRA met with representatives from Winton Shire Council, landowners, BoM, DNRM and SUNWater in the Flinders Basin to discuss opportunities to improve where and how the flood warning gauge network could be improved; how councils might develop flood warning infrastructure investment plans for future grant applications; the effectiveness of the BoM service for councils; and other issues related to the review.

Local knowledge provided during the meetings has proven invaluable to BoM and QFES, which continues to improve their understanding of the local conditions and context.

QRA continues to provide follow-up support to councils with respect to developing grant applications and any subsequent assistance in relation to the installation and commissioning of new gauge assets.



### 3.5 Program spotlights (continued)

#### Gympie Regional Council 2015 event program completed well ahead of time

Gympie Regional Council has completed its latest restoration program more than a year ahead of the Commonwealth's 30 June 2017 deadline.

Gympie Regional Council has gained plenty of reconstruction experience after being frequently impacted by natural disasters over the past five years. Council has received an estimated \$60 million in NDRRA funding to repair damaged public infrastructure since 2011.

In February 2015, Gympie was impacted by Severe Tropical Cyclone Marcia, leaving the region with an estimated damage bill of \$1.7 million to public infrastructure. Flooding caused severe damage to floodways, roads and culverts, with more than 180 sites across the region repaired as part of Council's restoration program.

Council was also successful in securing more than \$220,000 in Betterment funding as part of the 2015 Betterment Fund to build back stronger, more disaster resilient infrastructure. Two floodways on Rossmore Road, near Kilkivan west of Gympie, were the subject of Council's Betterment project.

Rossmore Road is a vital rural collector road that follows the line of Fat Hen Creek for much of its length. The road provides the sole access for local residents and primary producers to the area's major transport route, the Wide Bay Highway.

Several popular tourist attractions also rely on Rossmore Road, including the Kilkivan Bush Camping Park, and the Prophet Gold Mine and the Mount Clara Chimney which hosts school groups, tours and visitors interested in the region's gold mining history.

Flooding brought on by Tropical Cyclone Marcia caused severe erosion to the banks of Fat Hen Creek, widening it and re-shaping its banks. The floodways were so damaged they no longer reached the other side of the creek, disrupting access and causing a major safety hazard.

Council's Betterment project for Rossmore Road was to extend both floodways with concrete to match the new width of the creek, providing a more resilient structure.

Gympie Regional Council Mayor Mick Curran said Council's 2015 NDRRA restoration and Betterment programs were completed a year earlier than required due to two key factors.

"This is in part thanks to Council's experienced staff who have managed multiple NDRRA events over the last five years and also due to the relatively small dollar value of this program," Cr Curran said.

"Council has worked closely with the Queensland Reconstruction Authority on our submissions and progress reporting so we were able to get on with the job of rebuilding as quickly as possible.

"After five years of rebuilding from natural disasters, Council is pleased to report there are no ongoing reconstruction programs left to deliver."

Council staff and local subcontractors started the works in May last year and completed them in May 2016.



*Damaged floodways on Rossmore Road following Tropical Cyclone Marcia (top and middle ) and following completion of betterment works (bottom)*

### 3.5 Program spotlights (continued)

#### Pormpuraaw Aboriginal Shire Council

#### Delivering value for money in 2014 event program

Pormpuraaw Aboriginal Shire Council has completed delivery of the largest natural disaster recovery program in its history, totaling approximately \$4.7 million.

The Indigenous community of Pormpuraaw, situated on the western coast of the remote Cape York Peninsula, had only just seen the floodwaters recede following a drenching from Tropical Cyclone Fletcher in February 2014, when Severe Tropical Cyclone Gillian struck early on the morning of 10 March 2014.

The Category 5 cyclone brought with it record rainfall for the area of up to 250mm and high speed wind gusts of up to 285 km per hour, which caused severe destruction to Council's public infrastructure.

Many roads throughout the community were closed as a result of the flooding. Additionally, the airfield was closed, and combined with road closures meant resupplying the community was only possible by helicopter.

Following the retreat of floodwaters, QRA established front-line engagement with Pormpuraaw Aboriginal Shire Council, and helped prioritise damage assessments and NDRRA submissions, focusing first on the town area and then on remaining infrastructure, such as out-stations and connection roads.

One of the worst affected assets was the Pormpuraaw Causeway, which is a two-lane bitumen sealed road raised above the broad expanse of monsoonal flatlands. It is the singular access road to the community and is particularly susceptible to flooding.

Floodwaters associated with Tropical Cyclone Gillian stripped the pavers away from the road's embankment, scouring the road and exposing the rock fill underneath.

Pormpuraaw Aboriginal Shire Council Mayor Richard Tarpencha said by working closely with Robinson Civil and Sariascape, and with TMR providing on the ground project supervision, Council was able to deliver the project for less than originally estimated.

"The Causeway is a good example of how, by using local materials and local workers alongside the contractors, we got the job done for approximately \$450,000, achieving good value for money," Cr Tarpencha said.

"We realised at the time the scale of reconstruction was beyond the capability of the community alone, but by using outside contractors working alongside and guiding local workers, the program presented an ideal opportunity to upskill the community.

"We worked together - the community and the folks from Robinson Civil - and by sourcing local materials through Boral, we were able to deliver the 2014 restoration, upskilling the community and delivering savings at the same time."



*Pormpuraaw Causeway following Tropical Cyclone Gillian (left) and after repairs (right)*

### 3.5 Program spotlights (continued)

#### TMR

#### Complementary works enhance disaster recovery outcomes

TMR is improving community outcomes following natural disasters by looking for opportunities to deliver complementary works in conjunction with some restoration works.

General Manager (Program Delivery and Operations) Amanda Yeates said that when planning NDRRA works across districts, it proved useful to consider whether funding from other TMR programs could be used to provide a better, more resilient road network for customers.

“Consultation and cooperation between delivery teams across each district is key to taking advantage of these opportunities,” Ms Yeates said.

“Where we can, we identify and prioritise projects where complementary funding could help mitigate flood risk or address safety issues – for example, an adjustment to the road alignment or extra signage that would not be eligible for funding under the NDRRA.

“We also consider complementary funding from TMR maintenance programs where other road repairs are required near an NDRRA site.



*Leichhardt Highway (Westwood–Taroom) – damage to road shoulder and pavement*

“Completing the complementary works while our crews are already in the area is more efficient as it saves on mobilisation costs and ultimately means there is less disruption to the community and fewer delays for motorists.”

One example project is on the Leichhardt Highway (Westwood–Taroom), where NDRRA works were required as a result of severe cracking in the sealed road shoulder caused by Severe Tropical Cyclone Marcia in February 2015. Complementary funding allowed TMR to also repair cracks in the through lanes that had not been visible at the time of the damage event.

On the Dawson Highway, the scope of some drainage works was also increased using maintenance program funding to complement NDRRA works. NDRRA-eligible funding was used to remove debris from culvert inlets, outlets and the cells themselves.

Without additional sediment removal from the outlet channels, the culverts and aprons would simply silt up again during the next water flow, so maintenance program funding was used at several locations to open outlet channels to reduce the risk of further siltation build-up in the drainage structures. Ms Yeates said separating and tracking NDRRA and complementary costs throughout the life of projects was important to ensure the necessary information was available for reporting and funding submissions.

“It’s a straightforward process. For sites that are extensions of NDRRA sites, complementary works may be carried out under the existing NDRRA contract as a variation, with an accompanying measured schedule to clearly quantify and cost the complementary works.”



*Leichhardt Highway (Westwood–Taroom) – repairs in progress (left) and following completion of works (right)*

## **Section four: Communications**



## 4.0 Communications

QRA is focused on building stakeholder confidence in the reconstruction by ensuring consistent and regular communication of public information.

### 4.1 Communicating progress

#### Media analysis

There has been a total of 100 media items in July 2016 (42 print – 42%, 12 TV – 12%, 31 radio – 31%, 15 online – 15%), which reached a cumulative audience of approximately 970,000 people.

There were media mentions for regions recovering from recent and previous natural disaster events including articles in The Bribie Weekly, Caboolture Shire Herald, Cairns Post, Capricorn Coast Mirror, Central and North Burnett Times, Central Telegraph, The Courier Mail, Dalby Herald, Fraser Coast Chronicle, Gladstone Observer, Gympie Times, Innisfail Advocate, Rockhampton Morning Bulletin, Bundaberg News Mail, North Queensland Register, North West Star, Northern Miner, Oakey Champion, Redland City Bulletin, Sunshine Coast Daily, Toowoomba Chronicle, Townsville Bulletin, Weekend Post and the Western Star; Internet coverage at abc.net.au, couriermail.com.au, themorningbulletin.com.au, townsvillebulletin.com.au, and news-mail.com.au; TV coverage on the Seven and WIN networks throughout the State; and radio mentions on ABC Radio Queensland, 4RO Rockhampton and SEA FM Rockhampton.

Making news in July 2016 was the adoption of Local Government budgets for Livingstone Shire and Rockhampton and Gladstone Regional Councils, with a focus on Tropical Cyclone Marcia recovery.

Banana Shire Council's 2015 Betterment program to increase the resilience of the region was featured in an article in the Central Telegraph.

Also making news in July 2016 was the appointment of **Mr Brendan Moon** to the role of **Chief Executive Officer** of QRA.

#### Communications

QRA keeps its stakeholders and the community informed and ensure access to the latest information regarding the reconstruction effort through its website, phone hotline and management of correspondence.

QRA's website is regularly updated, including information about progress on Betterment projects and current recovery efforts. There has been a large number of visits to the website since it was launched on 18 February 2011. At 31 July 2016, total website visits amounted to 499,880 – a 0.4 per cent increase since last month. (See Figure 5.1.1)

In July, we received an additional 16 calls to our dedicated hotline and managed 190 pieces of written correspondence (See Figure 5.1.2).

Fig. 5.1.1 Website traffic

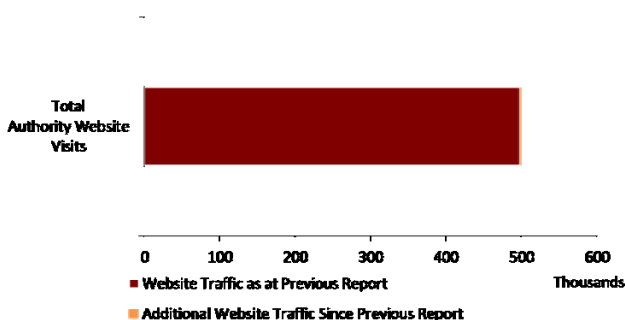
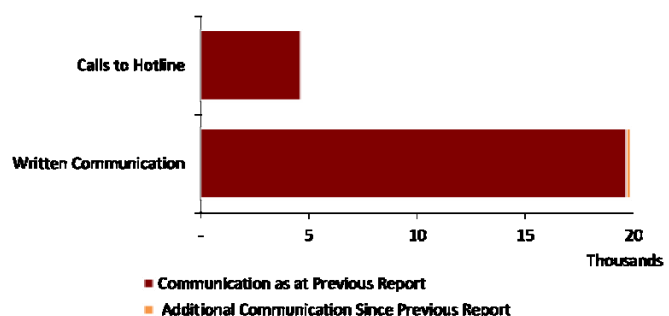


Fig. 5.1.2 Communications



Source: QRA at 31 July 2016

## 4.2 Media reports

# Capital works at budget's heart

General rates increase by 4.5%, road levy rise 4.9%

AN \$88.8 million capital works program has been labelled the "centre-piece" of Livingstone Shire Council's 2016-17 budget by Mayor Bill Ludwig ahead of its formal adoption on July 12.

Mayor Ludwig presented the draft 2016-17 budget to Livingstone Shire councillors as per the requirements of the Local Government Act 2009.

He said this year's budget was again focused on optimising service delivery for ratepayers while continuing major investment in strategic infrastructure needed to underpin the shire's long-term sustainability and post-cyclone economic recovery.

He said the record \$88.8 million capital works

program was made possible through the council's ongoing successes in securing \$47.2m state and federal government funding.

"This exceptional capital works program will continue to generate much needed construction jobs and provide immediate economic uplift, while delivering the critical infrastructure required to create the long-term jobs and private sector investment needed to reinvigorate our regional economy," Cr Ludwig said. "Strategic rural and urban road networks will see a record \$47.3 million investment representing 53.2% of the total capital works program."

"While council secured \$11.7 million in state and federal disaster funding to assist in undertaking 'big ticket' projects like the cyclone damage on the Scenic Highway at Statue

Bay, there will be an ongoing requirement for significant council contributions toward this and other major road and cycleway network projects across the shire.

"To assist the long-term funding of the planned major improvements across our 1400 kilometres of strategic, rural and local road networks over future years, the 10% discount for prompt payment will no longer apply to the road levy component.

"The 10% prompt payment discount will however continue to apply to the general rates across all categories.

"Despite ongoing post-cyclone challenges, this budget will continue to deliver the highest possible level of service for residents, while keeping rate increases within council's existing 10 year long-term financial management plan forecast. "Accordingly across all



DETAILS BEZ ARD: Livingstone Shire councillors Adam Bell, Glenda Marler, Graham Scott, Bill Ludwig, Nigel Patton, Joe Kelly and Tom Wyatt will adopt the 2016-17 budget next week at the council chambers. PHOTO: SHIRI HARRISON

Central and North Burnett Times—7 July

## FLOOD RESTORATION UPDATE

Over the next fortnight, flood restoration works will be concentrated in the following locations:

**Gayndah Area** - Gayndah-Mundubbera Rd, Gayndah Water Intake Access Track, Redvale Rd, Slab Creek Rd

**Monto Area** - Clonmel Rd, Dooloo Topps Rd

**Mundubbera Area** - Malmoe Rd, O'Bill Bil Rd

**Mt Perry Area** - Sunday Creek Rd, Swindon Rd



Nogo River Road, Mundubbera 'under construction'

Council acknowledges the Natural Disaster Relief and Recovery Arrangements (NDRRA) funding is a joint Commonwealth and State Government program.

# Council to spend \$70m on roads

Gladstone Observer—7 July

## Big win for Boyne Valley

Declan Cooley  
Declan.Cooley@gladstonerobserver.com.au

WHEN the budget drops most people have an opinion on what the council plans to do with their hard-earned money. Generally speaking, people like to kick up a stink about rate increases and the allocation of millions of dollars for projects around the region. Given the gloomy economic climate that hangs over the region, this year the council has tightened its belt to find savings. The council managed to save \$1.84 million this year but mayor Matt Burnett said he wanted to make sure every part of the region felt like they were getting something.

And when hopeful candidates for the council trucked themselves down to Nagoorin for a meet and

greet with the locals before the election, many voiced their concerns about the state of the roads in the Boyne Valley. In the budget the council allocated more than \$70 million for roads and drainage. A lot of that money will go towards roads in rural areas, including more than \$2 million to be spent on Norton Road in the Boyne Valley, \$850,000 on Tableland Rd, \$460,000 on Mount Larcom Bracwell Rd and \$315,000 on Racecourse Rd.

Born and bred Boyne Valley local Mark McLaughlin said he'd had a quick look at the budget and was relatively pleased with what he saw, though he would have liked the council to spend more money on resealing some of the gravel roads they already have.

The cattle farmer and timber logger said the money for the upgrades to

the Boyne Valley's road network was absolutely necessary and overdue. "People only think of industry if it's in town and has a smoke stack, but industry in the Boyne Valley relies on being able to get our cattle and timber out to market," he said.

"Out here roads and flood mitigation are the priorities because it drives our industry backwards when the roads are bad."

Mr McLaughlin was particularly impressed with the \$2 million funding for Norton Rd, which he said was a "shocker", especially after flooding. "In a normal wet season trucks would break through the surface of the road," he said.

"Imagine going through three months where you can't get any product out."

Norton Rd leads to the Norton Gold

## THE MONEY POT

- \$441,461 for Bracwell Rd
- \$641,000 for Darts Creek, East End and Mount Larcom
- \$35,000 for Racecourse Rd
- \$849,350 for Tableland Rd
- \$2,033,355 for Norton Rd
- \$250,000 for Baffle Creek
- \$460,000 for Deepwater
- \$283,000 for Captain Creek
- \$210,000 for Agnes Water
- \$300,000 for Turkey Beach

Industry in the Boyne Valley relies on being able to get our cattle and timber out to market

Mine in Nagoorin, and Mr McLaughlin said he hoped the council would put in 3-4 causeways so the road wouldn't be impacted by flooding. "It's a big expenditure but it's surprising it wasn't done 30 years ago," he said. In total, the council will spend

almost \$2.7 million on road re-sheeting projects throughout the region.

And according to the council's works and traffic chair councillor Peter Masters 31 of the region's roads would benefit from the 2016-17 gravel resurfacing works program.

"In addition, council has contributed more than \$300,000 to improve flood resilience on seven regional roads with the Queensland Government providing more than \$3.7 million for the project via its Natural Disasters Relief and Recovery Arrangements Betterment Fund." Cr Masters said. The council will also spend \$215,000 to widen and put in place a cycle path on Glenlyon Rd between Derby St and Phillip St and \$1.5 million will go towards upgrades to Harvey Rd.

# \$3.5m to fix flood damage

REPAIRING infrastructure along Callide Creek damaged in heavy rain earlier this year will cost the Banana Shire about \$3.5 million in the next 12 months.

The crossing at Linkes Rd, which was damaged in the January/February flooding event, had only just been repaired after it was nearly destroyed during Cyclone

Marcia in 2015.

"We just got it all fixed up and - bang," said Banana Shire Council chief executive officer Ray Geraghty.

The repairs to the crossing will make it sturdier than the pre-existing roadway after the council successfully applied for betterment funding from the State Government.

The \$3.5 million will also go towards upgrading Lindleys Rd near Dululu, along with other infrastructure along the route of Callide Creek.

Mr Geraghty said the council expected to have all the work completed by June next year.

"We've made a fair bit of headway but that's our priority - to get that sorted out and get it done."



Callide Creek Crossing on Linkes Road after February's flood event.

PHOTO: CAMERON MCCROHON

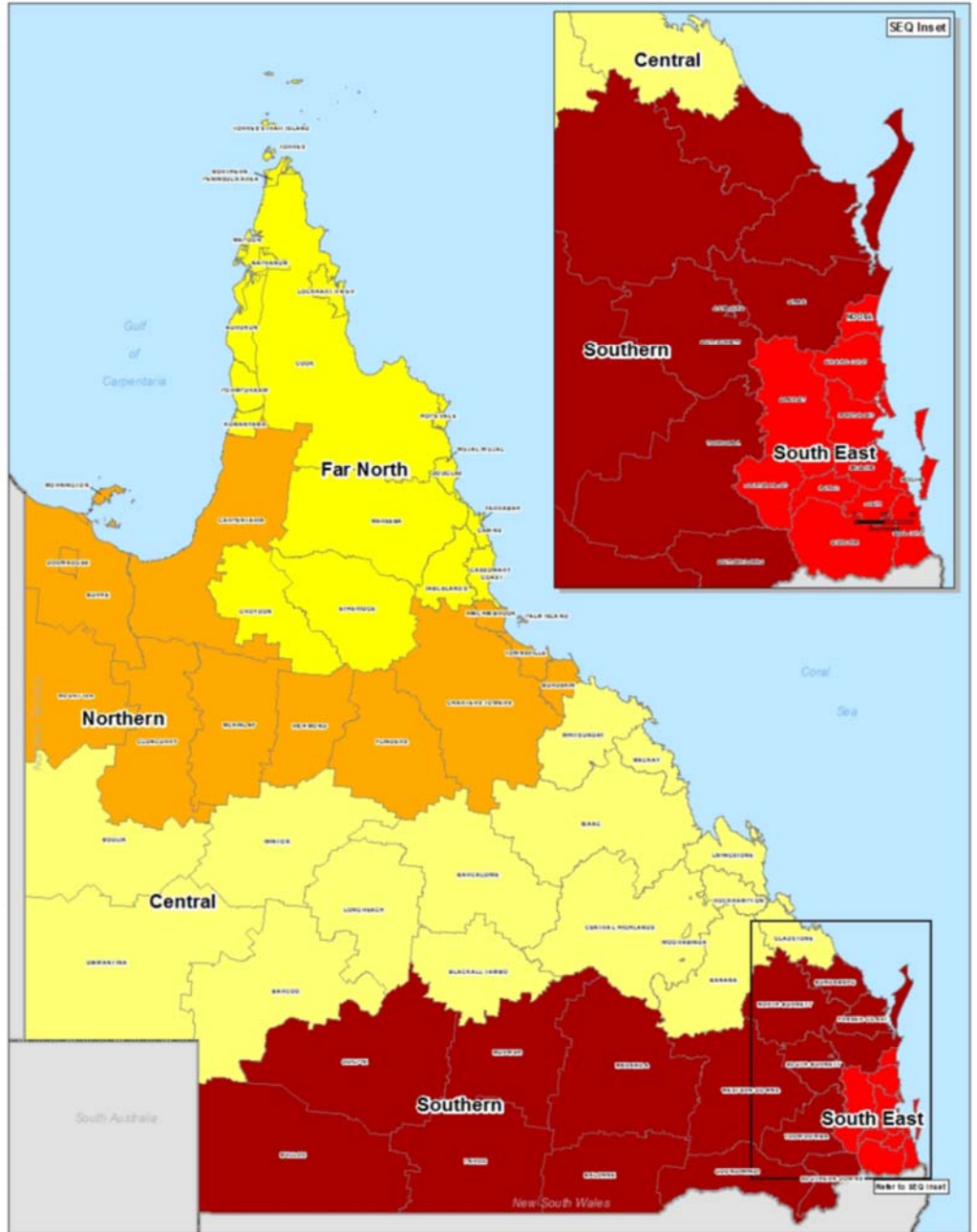
Central Telegraph — 8 July

# Appendices



# Appendix A: Local Government Areas by Region

Region	Local Government Areas (LGA's)	
Far North Queensland (FNQ)	ASC	Aurukun Shire Council
	CRC	Cairns Regional Council
	CCRC	Cassowary Coast Regional Council
	CoSC	Cook Shire Council
	CfSC	Croydon Shire Council
	DSC	Douglas Shire Council
	ESC	Etheridge Shire Council
	HVASC	Hope Vale Aboriginal Shire Council
	KASC	Kowanyama Aboriginal Shire Council
	LRASC	Lockhart River Aboriginal Shire Council
	MASC	Mapoon Aboriginal Shire Council
	MbaSC	Mareeba Shire Council
	NASC	Napranum Aboriginal Shire Council
	NPARC	Northern Peninsula Area Regional Council
	PASC	Pormpuraaw Aboriginal Shire Council
	TRC	Tablelands Regional Council
	TSC	Torres Shire Council
	TSIRC	Torres Strait Island Regional Council
	WWASC	Wujal Wujal Aboriginal Shire Council
YASC	Yarrabah Aboriginal Shire Council	
North Queensland (NQ)	BrdSC	Burdekin Shire Council
	BrkSC	Burke Shire Council
	CSC	Carpentaria Shire Council
	CTRC	Charters Towers Regional Council
	CISC	Cloncurry Shire Council
	DASC	Doomadgee Aboriginal Shire Council
	FSC	Flinders Shire Council
	HSC	Hinchinbrook Shire Council
	McSC	McKinlay Shire Council
	MoSC	Mornington Shire Council
	MICC	Mount Isa City Council
	PIASC	Palm Island Aboriginal Shire Council
	RSC	Richmond Shire Council
	TCC	Townsville City Council
Central Queensland (CQ)	BanSC	Banana Shire Council
	BarRC	Barcaldine Regional Council
	BarSC	Barcoo Shire Council
	BTRC	Blackall-Tambo Regional Council
	BOSC	Boulia Shire Council
	CHRC	Central Highlands Regional Council
	DSC	Diamantina Shire Council
	GSC	Gladstone Regional Council
	IRC	Isaac Regional Council
	LSC	Livingstone Shire Council
	LRC	Longreach Regional Council
	MacRC	Mackay Regional Council
	RRC	Rockhampton Regional Council
	WRC	Whitsunday Regional Council
WSC	Winton Shire Council	
WASC	Woorabinda Aboriginal Shire Council	
Southern Queensland (SQ)	BaISC	Balonne Shire Council
	BSC	Bulloo Shire Council
	BRC	Bundaberg Regional Council
	CASC	Cherbourg Aboriginal Shire Council
	FCRC	Fraser Coast Regional Council
	GoRC	Goondiwindi Regional Council
	GRC	Gympie Regional Council
	MarRC	Maranoa Regional Council
	MuSC	Murweh Shire Council
	NBRC	North Burnett Regional Council
	PSC	Paroo Shire Council
	QSC	Quilpie Shire Council
	SBRC	South Burnett Regional Council
	SDRC	Southern Downs Regional Council
ToRC	Toowoomba Regional Council	
WDRC	Western Downs Regional Council	
South East Queensland (SEQ)	BCC	Brisbane City Council
	GCCC	Gold Coast City Council
	ICC	Ipswich City Council
	LVRC	Lockyer Valley Regional Council
	LCC	Logan City Council
	MBRC	Moreton Bay Regional Council
	NSC	Noosa Shire Council
	RCC	Redland City Council
SRRC	Scenic Rim Regional Council	
SRC	Somerset Regional Council	
SCRC	Sunshine Coast Regional Council	



**Local Government Areas and QldRA Reporting Regions**  
 Scale at A4: 1:6,700,000

Legend

- QldRA\_Region
- Far North Queensland
- North Queensland
- Central Queensland
- Southern Queensland
- South East Queensland
- Local Government Areas

As at 5/02/2014

Queensland Reconstruction Authority

