

QUEENSLAND RECONSTRUCTION AUTHORITY

Monthly Report

February 2015

A decorative graphic in the bottom right corner of the page, consisting of several overlapping, radiating lines in various shades of maroon and red, creating a sense of depth and movement.

Document details:

Security classification	Public
Date of review of security classification	February 2015
Authority	Queensland Reconstruction Authority
Author	Chief Executive Officer
Document status	Final
Version	1.0

Contact for Enquiries:

All enquiries regarding this document should be directed to:

Queensland Reconstruction Authority

*Phone the call centre - **1800 110 841***

Mailing Address

Queensland Reconstruction Authority

PO Box 15428

City East Q 4002

Alternatively, contact the Queensland Reconstruction Authority by emailing info@qldra.org.au

Licence

This material is licensed under a [Creative Commons - Attribution 3.0 Australia licence](#).



The Queensland Reconstruction Authority requests attribution in the following manner:

© The State of Queensland (Queensland Reconstruction Authority) 2011-2014

Information security

This document has been classified using the [Queensland Government Information Security Classification Framework \(QGISCF\)](#) as PUBLIC and will be managed according to the requirements of the QGISCF.

Message from the Chief Executive Officer

Major General Richard Wilson AO (Ret'd)
Chairman
Queensland Reconstruction Authority

Dear Major General Wilson

It is with pleasure that I present the February 2015 Monthly Report – the 48th report to the Board of the Queensland Reconstruction Authority (the Authority).

The Authority was established under the *Queensland Reconstruction Authority Act 2011* following the unprecedented natural disasters which struck Queensland over the summer months of 2010-11. The Authority is charged with managing and coordinating the Government's program of infrastructure renewal and recovery within disaster-affected communities, with a focus on working with our State and local government partners to deliver best practice expenditure of public reconstruction funds. Since its establishment, the role of the Authority has subsequently been extended to cover historical and continuing disaster events in Queensland.

The January report provides an update on the progress of recovery. Following the passing of the timeframe for delivery of much of the reconstruction works arising from the 2011 and 2012 events, the Authority is currently focused on closing out the massive volume of works completed up to 30 June 2014 for acquittal to the Commonwealth. The majority of these works have now passed through the Authority's close out processes and are currently subject to audit review ahead of acquittal to the Commonwealth in mid-2015. Concurrently, the Authority is also actively managing delivery of the considerable program of works remaining from Tropical Cyclone Oswald and other events of 2013 and 2014 through the damage assessment, submission preparation and approval and delivery phases.

The Authority also remains prepared to respond should disaster strike in the current 'disaster season'.

Inclusive of these tasks, the Authority is managing a total program of works for events from 2009 through to 2014 with an estimated total cost of \$13.33 billion. As at 2 February 2015:

- an additional \$79 million in submissions have been received by the Authority since last month
- an additional \$192 million has been processed by the Authority since last month
- a cumulative value of \$12.52 billion of the \$13.33 billion works program (2009 to 2014) has been reported to the Authority as being in progress or delivered by delivery agents as at 31 December 2014.

The February report provides a review of the disaster recovery and reconstruction efforts during 2014 - the year saw the State impacted by 10 separate events; the passing of a key milestone marking completion of much of the works from the devastating floods and cyclones of 2011 and 2012, delivery of more than 100 betterment projects and progression of the acquittal of works to the Commonwealth. The report also provides updates on the progress of the significant program of works still underway and highlights the recent completion of the Linkes Road betterment project in Banana Shire Council.

I commend the report to you and recommend its release to the Minister and the public pursuant to Section 41 of the *Queensland Reconstruction Authority Act 2011*.

Yours sincerely



Frankie Carroll
Chief Executive Officer
Queensland Reconstruction Authority

Contents

1.0 Introduction	1
1.1 Background	2
1.2 Purpose	2
1.3 Timing	2
2.0 Disaster Assistance	3
2.1 Queensland Disaster Assistance Framework	4
2.2 Disaster assistance by event period	5
2.3 Events managed by the Authority	6
2.4 Additional assistance measures	7
2.4.1 Betterment fund	7
2.4.2 Other assistance measures	7
3.0 Program Status	8
3.1 Recent developments	9
3.2 Combined program status	9
3.3 Program of works expenditure	9
3.4 State-wide pipeline of works	10
3.5 State-controlled roads and highways	11
3.6 Betterment fund status	12
4.0 Progress Reports	13
4.1 Iconic projects in reconstructing Queensland	14
4.2 Program spotlights	16
5.0 Communications	20
5.1 Communicating progress	21
5.2 Media reports	22
<u>Appendices</u>	
Appendix A: Local Government Areas by Region	22

Section one:
Introduction



1.0 Introduction

1.1 Background

Queensland has been struck by a series of unprecedented natural disasters in recent years. Between November 2010 and April 2011, extensive flooding caused by periods of extremely heavy rainfall, destruction caused by a number of storm cells including Cyclones Tasha, Anthony and Severe Tropical Cyclone Yasi and subsequent monsoonal flooding, resulted in all of Queensland being declared as disaster affected.

On 21 February 2011 in response to the 2011 disaster events, the Queensland Government established the Queensland Reconstruction Authority (the Authority) under the *Queensland Reconstruction Act 2011*. The Authority's role was subsequently extended to cover historical and continuing disaster events in Queensland.

The Authority has since been given responsibility to administer Natural Disaster Relief and Recovery Arrangements (NDRRA) for the large scale natural disaster caused by Tropical Cyclone Oswald in late January 2013 and additional events which have occurred in the 2013, 2014 and 2015 disaster event periods. The *Queensland Reconstruction Authority Amendment Bill 2013* was passed on 14 February 2013 to expand the jurisdiction of the Authority to include the 2013 events.

1.2 Purpose

The Authority's mission is **to reconnect, rebuild and improve Queensland communities and its economy.**

The Authority is charged with managing and coordinating the Government's program of infrastructure renewal and recovery within disaster-affected communities, with a focus on working with our State and local government partners to deliver best practice expenditure of public reconstruction funds.

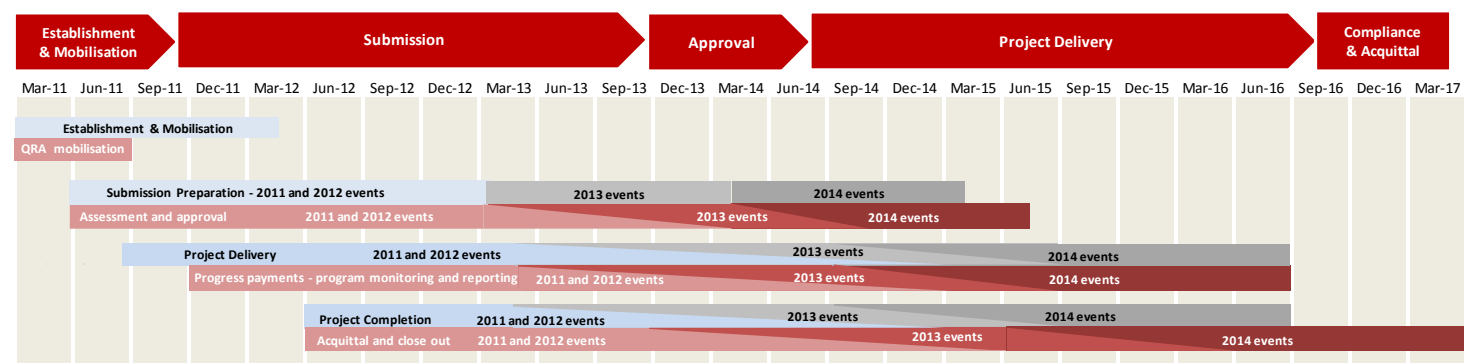
The Authority operates with reference to recovery and reconstruction plans established by the State in response to the 2011 disaster events and more recently following Tropical Cyclone Oswald in 2013 and Severe Tropical Cyclone Ita in 2014. Most recently, the Severe Tropical Cyclone Ita Recovery Plan (Recovery Plan), provides strategic guidance for the coordination and management of recovery, reconstruction and community resilience activities undertaken across the State after the flood and damage impacts of Severe Tropical Cyclone Ita.

1.3 Timing

The Authority's priorities are currently progressing the acquittal of the massive program of works from the 2011, 2012, 2013 and 2014 disaster periods completed prior to 30 June 2014. These works include a significant body of reconstruction works from the 2011 and 2012 disaster periods and other reconstruction and recovery works from the 2013 and 2014 periods completed by that date. The majority of these works have now passed through the Authority's close out processes and the Authority is currently working with the QAO to progress its audit of the draft claim prior to acquittal of the works via lodgement of a final audited claim to the Commonwealth in mid-2015.

The Authority is also assisting delivery agents prepare outstanding submissions from the 2014 events, and monitoring of the remaining 2012, 2013 and 2014 programs into, and through, the project delivery phase as soon as practicable.

With the recent activation of 2015 events, the Authority is also liaising with relevant delivery agents to assist with damage assessments and submission preparation, and remains prepared to respond should additional disasters strike in the current 'disaster season'.



Section two:
Disaster Assistance

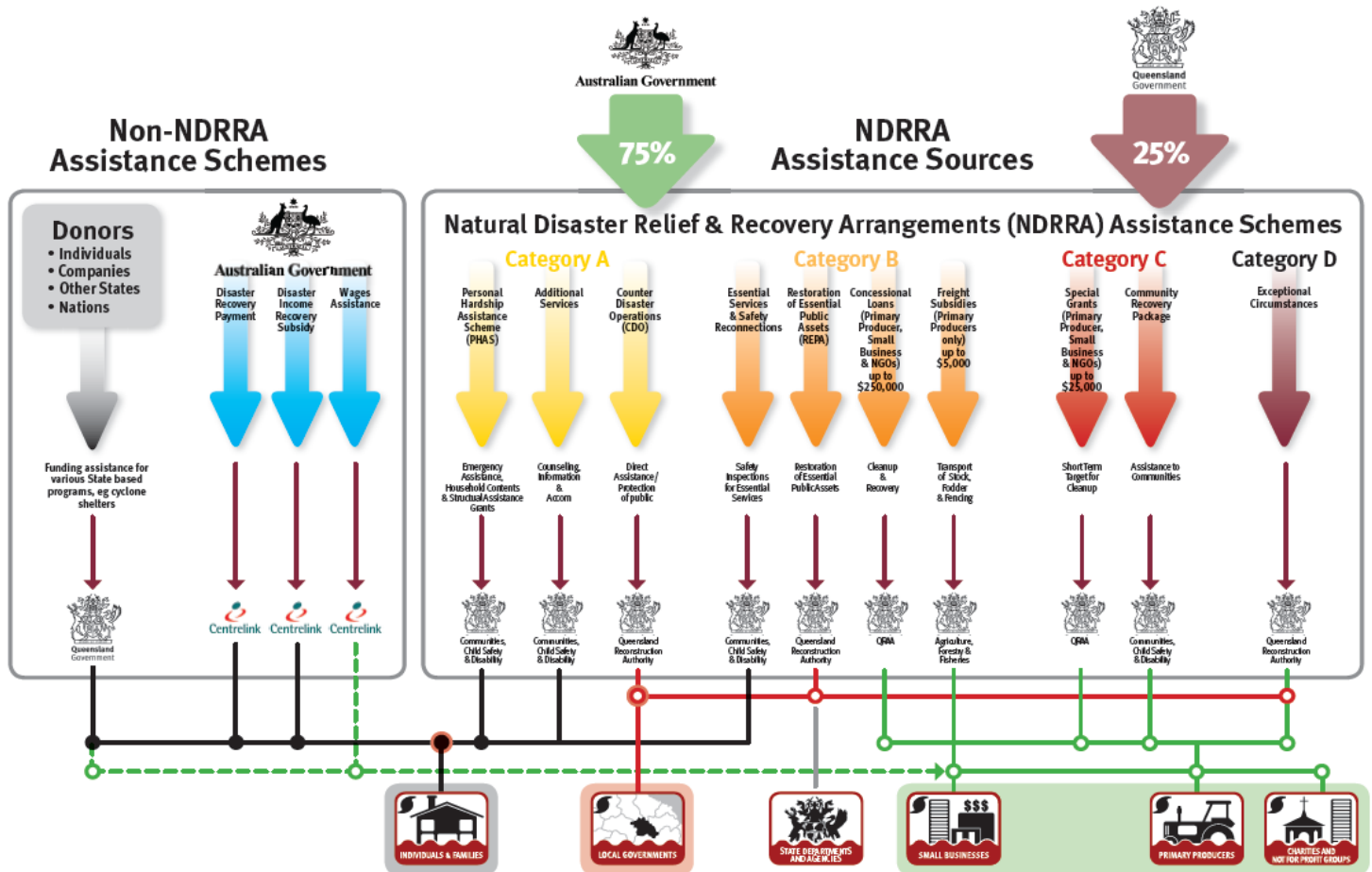


2.0 Disaster Assistance

2.1 Queensland Disaster Assistance Framework

The available Queensland Disaster Assistance schemes are separated between NDRRA (jointly funded by the Commonwealth and State governments) and Non-NDRRA funding schemes. The diagram below indicates the different elements of assistance available and how each element operates.

Figure 2.1.1 Queensland Disaster Assistance Framework



Whilst elements of the assistance schemes are delivered by other State agencies, all of the NDRRA assistance sources (and elements of the non-NDRRA assistance schemes) are administered by the Authority for historical and continuing disaster events in Queensland.

Disaster events managed by the Authority

The list of the activated disaster events managed by the Authority are set out in **Section 2.3** and can also be found on www.disaster.qld.gov.au.

The maps opposite show the LGAs activated for relief measures under NDRRA for each event period under the Queensland Disaster Assistance Framework.

This report includes references to event periods described as follows:

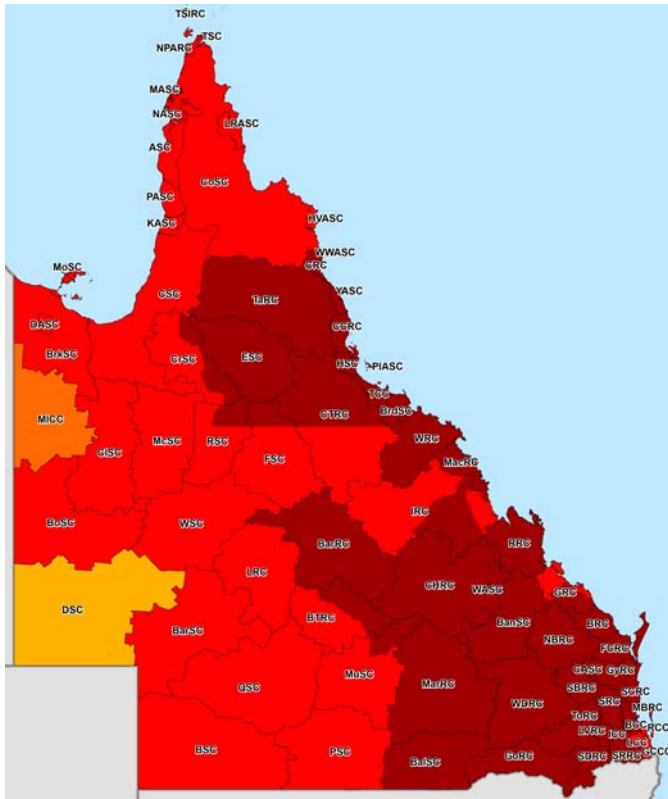
- **2015 events:** Activated disaster events managed by the Authority which occurred in the financial year ended **30 June 2015**
- **2014 events:** Activated disaster events managed by the Authority which occurred in the financial year ended **30 June 2014**
- **2013 events:** Activated disaster events managed by the Authority which occurred in the financial year ended **30 June 2013**, including Tropical Cyclone Oswald and associated rainfall and flooding (January 2013)
- **2012 events:** Activated disaster events managed by the Authority which occurred in the financial year ended **30 June 2012**
- **2011 events:** Activated disaster events managed by the Authority which occurred in the financial year ended **30 June 2011**, including Tropical Cyclone Yasi and Queensland flooding (November 2010 to February 2011)
- **2009-2010 events:** Activated disaster events managed by the Authority which occurred prior to 30 June 2010
- **Combined Program:** relates to all the activated disaster event programs managed by the Authority.

2.0 Disaster Assistance

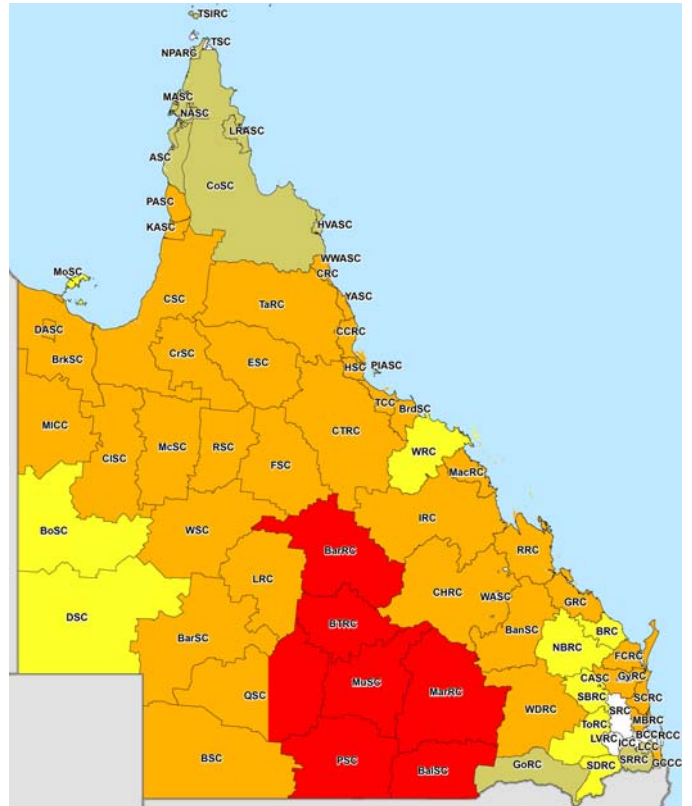
2.2 Disaster assistance by event period

The maps below show the LGAs activated for relief measures under NDRRA for each event period managed by the Authority under the Queensland Disaster Assistance Framework.

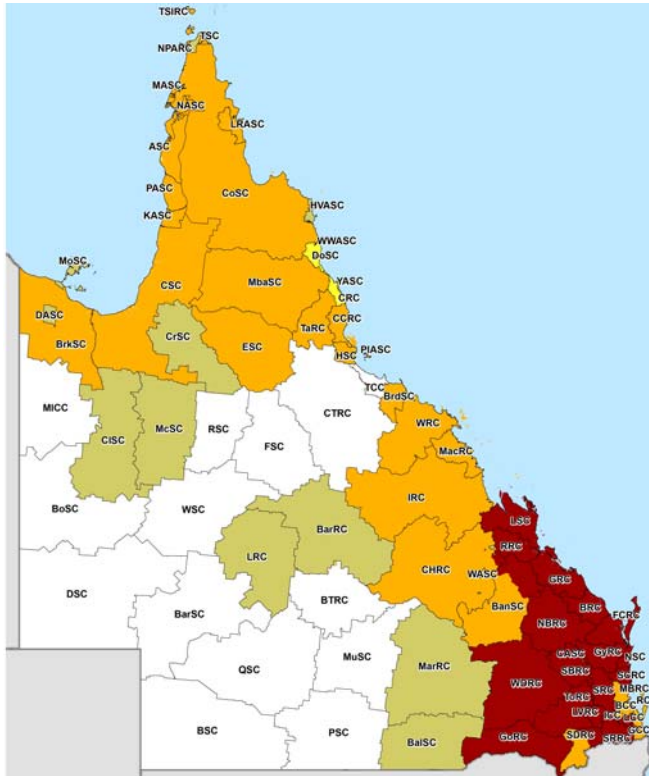
Map 1 - LGAs disaster activated under NDRRA for 2011 events



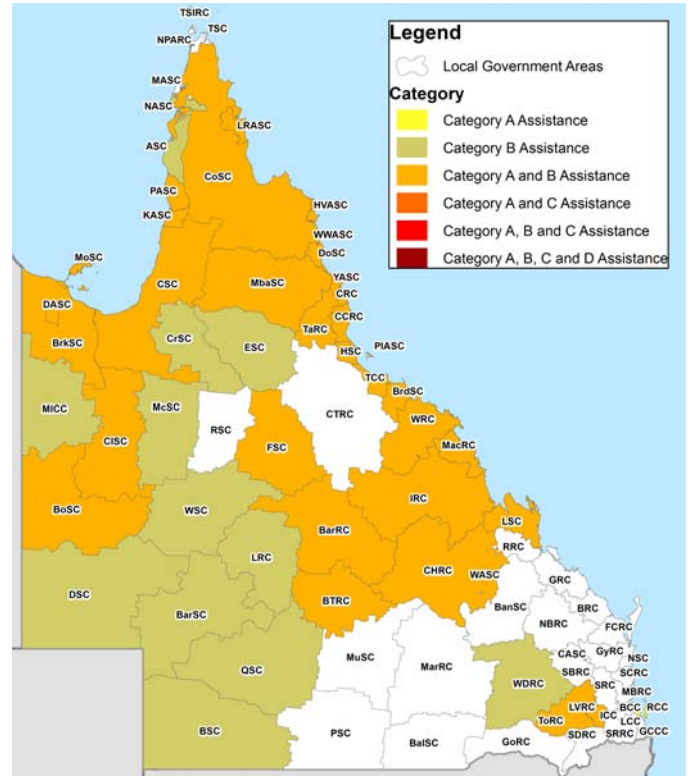
Map 2 - LGAs disaster activated under NDRRA for 2012 events



Map 3 - LGAs disaster activated under NDRRA for 2013 events



Map 4 - LGAs disaster activated under NDRRA for 2014 events



To date, Brisbane City Council, Banana Shire Council and Maranoa Regional Council have been activated for relief measures for 2015 events.

* Refer Appendix A for glossary of LGA abbreviations

2.3 Events managed by the Authority

The Authority has responsibility to administer NDRRA relief measures for historical and continuing disaster events in Queensland. The Authority currently manages and coordinates the infrastructure reconstruction and recovery for 28 disaster events activated for NDRRA relief measures since the Authority's establishment in February 2011 and the remaining program of works for an additional 16 disaster events which occurred prior to the Authority's establishment.

2015 events:

- Central Queensland Heavy Rainfall & Flooding, 8-14 December 2014
- Brisbane Severe Thunderstorm, 27 November 2014

2014 events:

- Tropical Cyclone Ita & Associated Rainfall & Flooding, 11-14 April 2014
- Tropical Cyclone Gillian - 10 to 11 March 2014
- Central Coast & Southern Queensland Trough, 26-30 March 2014
- Central & Western Queensland Flooding & Rainfall, 18-28 February 2014
- North East Queensland Monsoonal Rainfall & Flooding - 7 to 9 February 2014
- Tropical Cyclone Fletcher, commencing 2 February 2014
- Far North Queensland Peninsula Flooding (27-31 January 2014)
- Tropical Cyclone Dylan, 31 January 2014
- North Stradbroke Island Fires, commencing 29 December 2013

2013 events:

- South West Queensland Wildfires, 21 December 2012
- Far Northern Queensland Bushfires, late October - December 2012
- Tropical Cyclone Oswald and Associated Rainfall & Flooding, 21-29 January 2013 *
- Longreach Flood, 18 February 2013 #
- Central & Southern Queensland Low, 25 February - 5 March 2013 #

2012 events:

- Queensland Bushfires, August to October 2011
- Localised Heavy Rainfall Northern Queensland, October 2011 *
- Southern Queensland Flooding, November to December 2011*
- South East Queensland Heavy Rainfall and flooding, 23- 26 January 2012 *
- Western Queensland Tropical Low, January - February 2012 *
- Far Northern Queensland Tropical Low, 3-4 February 2012 *
- North Coast Queensland Storms and flooding and East Coast Hybrid Low, 24 February - 7 March 2012 *

2012 events (continued):

- Northern and Far Northern Queensland Heavy Rainfall & flooding, 15 March 2012 *
- East Coast Low, 22 March 2012 *

2011 events:

- Queensland Flooding and Tropical Cyclones Tasha and Anthony, November 2010 to February 2011*
- Severe Tropical Cyclone Yasi on 2 February 2011*
- Queensland Monsoonal Flooding Event, 8 February 2011*
- South West Flooding, April 2011*

2007-2010 events managed by the Authority:

- South East and North Coast Queensland East Coast Low, August 2007
- South West Queensland storms and flooding, 23-30 November 2007
- Central Western Queensland storms and flooding, 22-30 December 2007
- South East Queensland East Coast Low, 27 December 2007 - 7 January 2008
- Queensland Monsoonal flooding, January 2008
- Queensland Monsoonal flooding, February March 2008
- South West Queensland flooding, June 2008
- Queensland storms and associated flooding, 16-22 November 2008
- Queensland Monsoonal flooding and Tropical Cyclone Charlotte and Ellie, January - February 2009
- South East Queensland Low, May 2009
- Queensland Bushfires, September - October 2009
- South West Flooding, 20 - 25 November 2009
- Northern, Central and South West Queensland Flooding, 22 December 2009 to 8 January 2010
- Queensland Monsoonal Flooding and Tropical Cyclones Olga, Neville, Ului and Paul, January to April 2010
- South West Queensland Low and Associated Flooding, September 2010
- 2010 South East Queensland Flooding, 9-12 October 2010.

The maps on the preceding page show the LGAs activated for relief measures under NDRRA for each event period managed by the Authority under the Queensland Disaster Assistance Framework.

* Events covered under the National Partnership Agreement for Natural Disaster Recovery and Reconstruction (NPA) between the State and Commonwealth Government signed 8 February 2013 (NPA Events).

Pending agreement to extend the NPA to include two additional 2013 events - Longreach Floods, 18 February 2013 and Central and Southern Queensland Low, 25 February - 5 March 2013.

2.4 Additional assistance measures

The State Government in conjunction with the Commonwealth have activated a range of jointly-funded Category C, Category D and other relief measures to alleviate distress due to the impact of Tropical Cyclone Oswald and the 2011 events. The measures are summarised below:

2.4.1 Betterment fund

On 8 February 2013, the Queensland Government signed the National Partnership Agreement (NPA) with the Commonwealth Government which recognised the need for a more streamlined process for the approval of Betterment funding. The Queensland Government announced a \$40 million commitment to Betterment funding which will match the Commonwealth Government contribution, resulting in the establishment of the \$80 million Betterment Fund.

In August 2013, the Betterment fund was extended beyond its original coverage of LGAs declared for NDRRA assistance for Tropical Cyclone Oswald to also cover LGAs declared for the two additional disaster events that occurred through to June 2013 (Longreach Flood (18 February 2013) and Central and Southern Queensland Low (25 February to 5 March 2013)). The Betterment fund is available for the restoration or replacement of essential public assets to a more disaster resilient standard than their pre-disaster standard. The intent of betterment is to increase the resilience of communities to natural disasters, while at the same time reducing future expenditure on asset restoration, reducing incidents, injuries and fatalities and improving asset utility during and after disaster events.

Where a damaged asset is approved as a betterment project, the normal cost of restoring or replacing the asset to its pre-disaster standard will continue to be funded under Category B of NDRRA assistance and the incremental cost to 'better' the asset to a more disaster-resilient standard will be financed from the Betterment fund. The status of the Betterment fund is set out in Section 3.7 of this report.

2.4.2 Other assistance measures

Tropical Cyclone Oswald

- **Community Recovery Package - \$5 million** - Funding for community development officers in the hardest hit communities of Bundaberg and North Burnett, support for mental health services and a flexible fund that assists communities to implement engagement and development activities.
- **Clean Up and Recovery program - \$10 million** - Program to assist primary producers to clear debris and restore fencing in the worst affected areas; to maintain workers while income generating activities are reduced and to clear debris from watercourse that poses a hazard to downstream infrastructure and activities.
- **Industry Recovery Officers - \$1.5 million** - Placement of Industry Recovery Officers to assist business and primary producers recover from flooding.
- **Enhanced concessional loans and grants** - Loans of up to \$650,000 (with a grant component of up to \$50,000) are available to applicants that have suffered extreme damage such that the existing concessional loan and recovery grants under NDRRA category B and C are insufficient to support recovery.
- **Environmental Recovery program - \$10 million*** - Program to fund existing programs to conduct flood specific clean up and soil conservation work following the 2013 flooding.
- **Rural Financial Counselling Services - \$1.5 million*** - Provision of financial planning advice for rural businesses and primary producers to assist in the recovery of local economies following the disaster.
- **Other measures - \$4.9 million** to fund dredging works to restore Bundaberg Port to its pre-2013 flood clearance depths; and **\$900,000** to assist Bundaberg Regional Council meet the cost of recovery works for community parks and gardens.

2011 events

- **Queensland Local Council Package - \$315 million** - Funding to help local councils repair utilities and infrastructure, and support their efforts in recovering from the floods and Cyclone Yasi. The package comprises two components: \$265 million to fast-track the repair of damaged infrastructure, including the Strengthening Grantham project, Brisbane ferry terminals and Riverwalk; and \$50 million to contribute to regional and remote councils employing people to perform important clean-up and repair work.
- **Cassowary Coast Support Package - \$15 million** - Funding to restore vital council infrastructure and restore natural vegetation and beach damage in the Cassowary Coast region. Specifically, the Support Package provides for the repair of Dunk Island Jetty, the repair of Clump Point Jetty and the restoration of Cardwell beach foreshore and its natural vegetation.
- **Exceptional Disaster Assistance Scheme** - Concessional interest loans of up to \$650,000, with grant component of up to \$50,000, to eligible businesses, primary producers and not-for-profit organisations that suffered extreme damage.

In addition, the State Government and Commonwealth have agreed to an extended Day Labour Trial, which enables councils to deliver restoration works with their own workforce on condition that they provide evidence of savings in both time and cost.

* Non-NDRRA measures funded 50% by the State and 50% by the Commonwealth; Commonwealth share is being delivered directly through existing Commonwealth programs.

Section three:

Program Status



3.0 Program Status

3.1 Recent developments

The timeframe for councils and state agencies to complete much of the works from the devastating floods and cyclones of early 2011 and the series of events which impacted the state in the summer of 2011-12 passed on 30 June 2014 and the Authority is currently undertaking the considerable task to close out and acquit the massive volume of works completed prior to 30 June 2014 on the 2011, 2012, 2013 and 2014 events for acquittal in the 2013-14 Commonwealth Claim. The majority of these works have now passed through the Authority's close out processes and the Authority is currently working with the QAO to progress its audit of the draft claim prior to acquittal of the works via lodgement of a final audited claim to the Commonwealth in mid-2015.

Whilst the delivery phase of much of the 2011 and 2012 event programs has now passed, the Authority's focus on delivery remains as there is still a significant program of works from Tropical Cyclone Oswald and other events of 2013 and 2014 to manage through the damage assessment, submission preparation and approval and delivery phases.

The Authority also remains prepared to respond should disaster strike in the current 'disaster season'. Since the last report, the first 2015 events have been activated - *Central Queensland Heavy Rainfall & Flooding, 8-14 December 2014* and *Brisbane Severe Thunderstorm, 27 November 2014*.

3.2 Combined program status

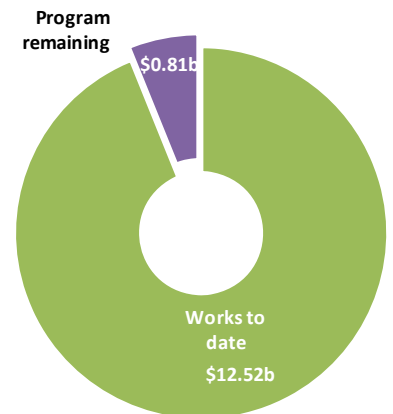
Following the September 2014 NDRRA estimates review process, the estimated program of works for all events actively managed by the Authority (2009 to 2014) is \$13.33 billion.

The estimated cost of the damage from the 2014 Events is \$455 million, the damage from the 2013 Events is estimated to be \$2.0 billion and the cost of the 2011 and 2012 Events is estimated to be \$6.8 billion and \$1.6 billion respectively. The cost of the 2009-10 Events managed by the Authority has been finalised at \$2.4 billion following acquittal of the balance of these programs in the 2012-13 Commonwealth Claim.

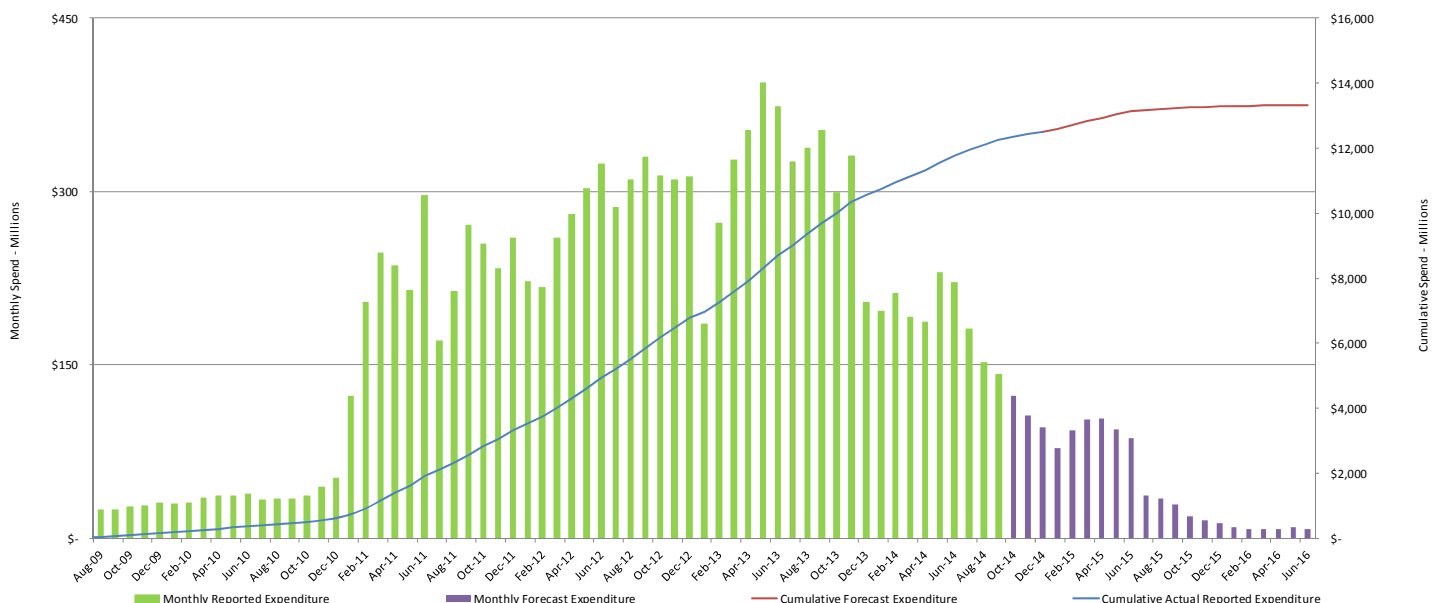
Program estimates for the two 2015 events which have occurred since the September 2014 review will be developed as part of the next regular estimates review process, which is due to commence in February 2015.

Since the last report, the combined program of works for all events managed by the Authority has progressed as follows:

- a cumulative value of \$18.2 billion in submissions have been received by the Authority to 2 February 2015, an increase of \$79 million since last month
- a cumulative total of \$18.0 billion has been processed by the Authority to 2 February 2015, an increase of \$192 million since last month
- a cumulative value of \$12.52 billion of the revised \$13.33 billion works program (2009 to 2014) has been reported to the Authority as being in progress or delivered by delivery agents as at 31 December 2014.



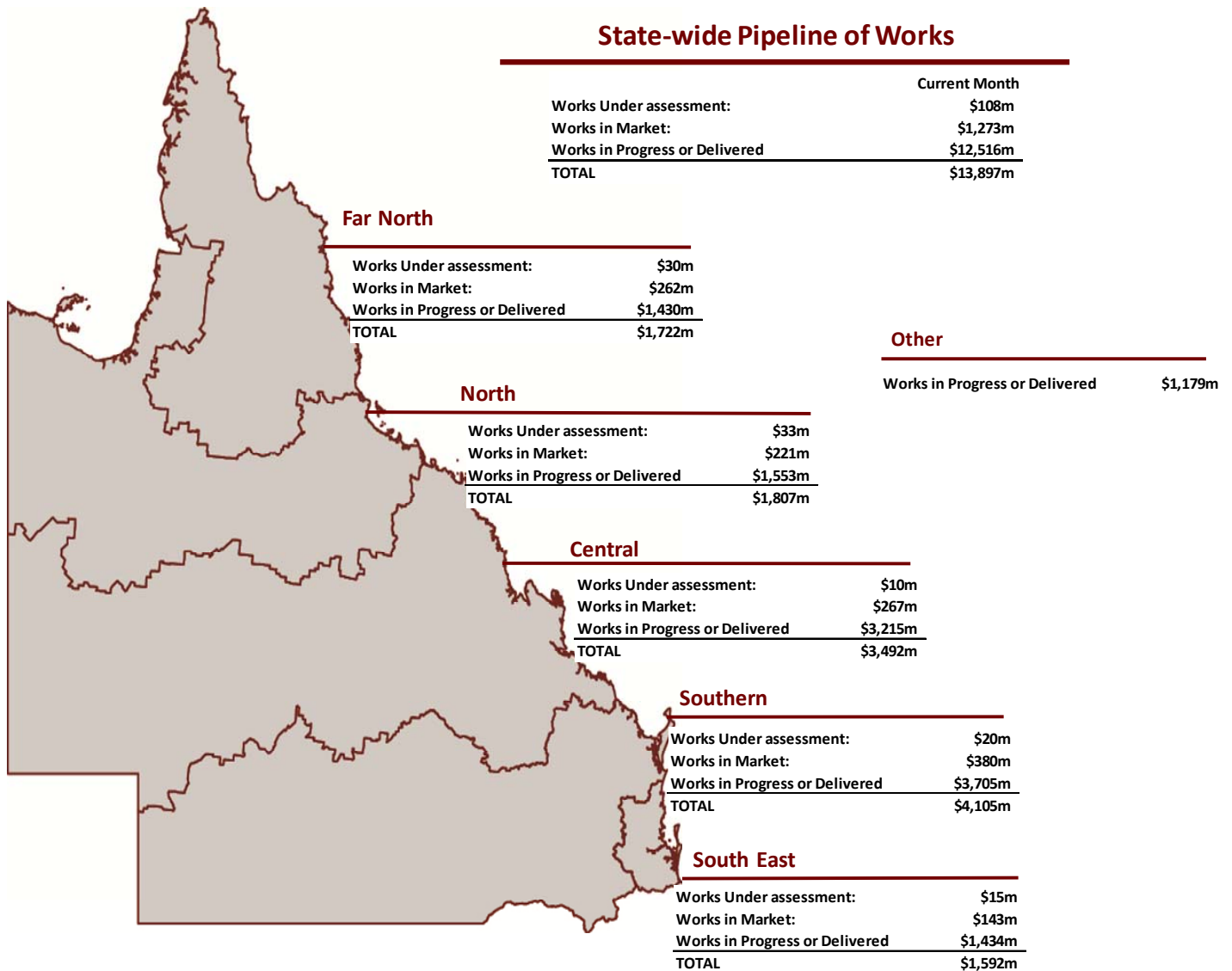
3.3 Program of works expenditure



Source: the Authority - September 2014 NDRRA Estimates Review & 2 February 2015

3.4 State-wide pipeline of works

Following completion of the September 2014 NDRRA estimates review process, the Pipeline of works for events actively managed by the Authority (2009 to 2014) has a revised estimated program value of \$13.33 billion, the status of which is set out below.



Source: DTMR at 31 December 2014; & Authority at 2 February 2015

Note:

1. Works Under Assessment and Works in Market represents data as at 31 December 2014 (DTMR) and 2 February 2015 (LGAs and Other). Works in Progress or Delivered represents spend by delivery agents to 31 December 2014 as reported to the Authority at 2 February 2015. Additional works have been conducted but are yet to be reported to the Authority
2. Other encompasses SDAs other than DTMR as well as the 2011 and 2013 Other Assistance.

Pipeline of Works Definitions

Stage	Description
Works under Assessment	Applications for packages which are currently under assessment by the Authority or are awaiting additional information from the applicant.
Works In Market	Estimate of spend remaining on works in progress and packages which have been approved by the Authority and are in the tender or contract process.
Works in Progress or Delivered	Expenditure as reported to the Authority on packages in progress or delivered.

Source: DTMR at 31 December 2014; and the Authority at 2 February 2015

3.5 State-controlled roads and highways

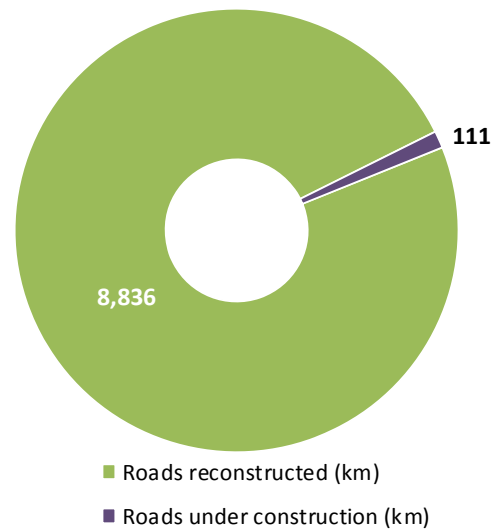
DTMR's Transport Network Reconstruction Program (TNRP) manages the recovery and reconstruction of Queensland's integrated transport system to reconnect Queensland communities and economies following the damage from natural disaster events in 2010, 2011, 2012 and 2013. The recovery and reconstruction works to the transport system following damage from the natural disaster events of 2014 is being managed separate to the TNRP by DTMR's Program Management and Delivery Unit.

The transport system includes state-controlled roads, ports, navigation aids and the rail network.

As at 31 December 2014:

- DTMR has spent more than \$6.6 billion on recovery and reconstruction of the transport network across the State arising from the natural disaster events that occurred between 2010 and 2014.
- **Roads** – DTMR's TNRP has completed 8,736km works and commenced construction of the remaining 5km of road to complete the 2010 to 2013 event program. In relation to the 2014 events damage, DTMR has completed works on 100 km of roads and commenced works on a further 106 km. *See Figure 3.6.1*
- **Rail** – All Queensland Rail lines closed or affected by natural disaster events have been recovered.
- **Maritime** – repairs have been required to navigation aids, jetties and other boating infrastructure following natural disasters from 2010 to 2013. The events of 2013 affected seven ports (all of which have since been reopened without restriction) and damaged or destroyed 348 aids to navigation, of which 347 have since been recovered and 1 temporarily fixed.

Fig.3.6.1 Roads damaged/reconstructed - 2010 to 2014 events



Works completed on Ingham–Halifax–Bemerside Road in December 2014

Recent achievements:

- Works were completed on 128km of damaged roads in December 2014
- During December 2014, construction commenced on the final 2013 event project in the Far North district and a variety of 2014 event projects, including works on Malanda–Upper Barron Road also in the Far North district.
- Construction was completed on projects valued at more than \$120 million in December 2014 including nine 2013 event projects in the Darling Downs district; 12 projects in the Far North district; two projects in Fitzroy district; two 2013 event projects in North Coast district, and 2014 event projects on the Burke Developmental Road in North West district.

(Source: DTMR, 31 December 2014)

Fig.3.5.2 TNRP summary of reconstruction works to date - December 2014

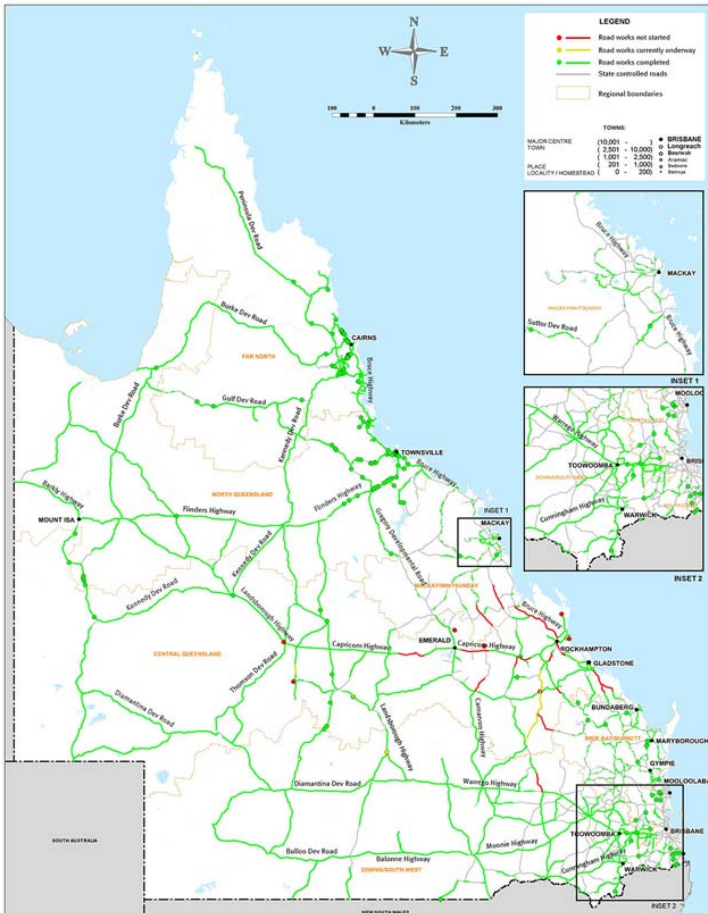
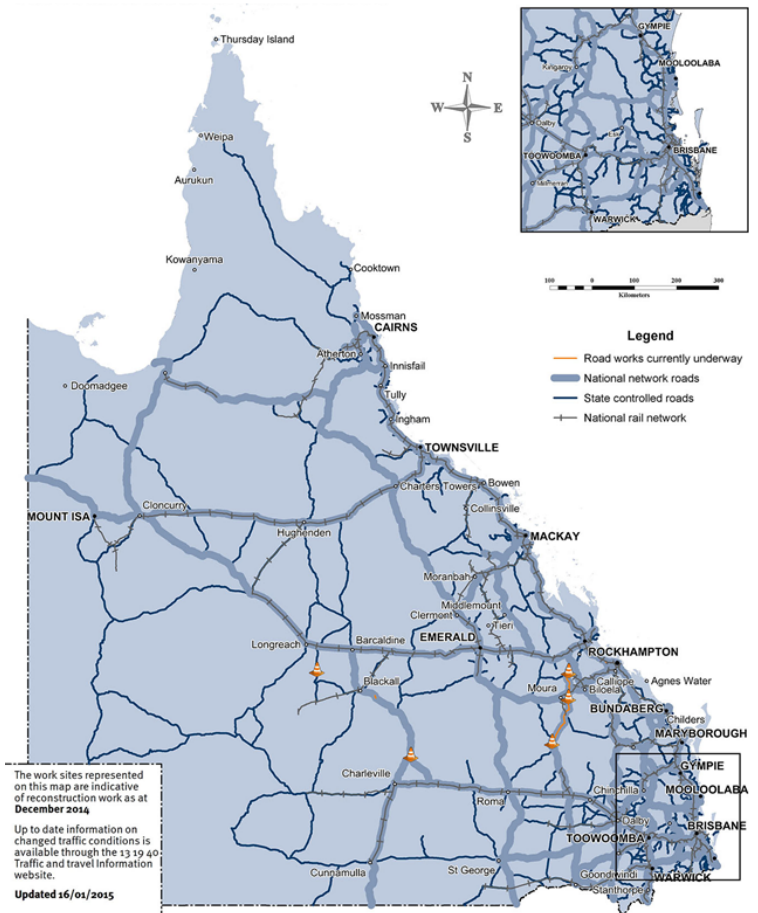


Fig 3.5.3 TNRP reconstruction work sites - December 2014



(Source: DTMR 31 December 2014)

3.6 Betterment fund status

The \$80 million Betterment fund is a Category D relief measure available to LGAs that have been declared for NDRRA assistance for the flood, storm and cyclone disaster events that occurred in Queensland in early 2013 for the restoration or replacement of essential public assets to a more disaster resilient standard than their pre-disaster standard.

The Betterment Fund was announced in February 2013 following Tropical Cyclone Oswald which caused damage to many of the assets which had been repeatedly damaged and restored from earlier disaster events. Correspondence was received from the Commonwealth in August 2013 agreeing to an extension of the Betterment fund to also cover LGAs declared for the two additional disaster events that occurred after Oswald through to June 2013 - Longreach Flood (18 February 2013) and Central and Southern Queensland Low (25 February to 5 March 2013).

Status

Expressions of Interest (EOI) were received by the Authority from 48 councils with approximately \$1 billion worth of Betterment projects to improve the resilience of infrastructure to natural disasters. Under the Betterment Framework, in addition to the normal NDRRA submission assessment process, the Authority considered the financial and non-financial benefits of the betterment proposal such as possible prior damage, loss of availability and its impact on economic or social factors of the community.

The Betterment Fund has now been allocated to 233 approved projects across 35 LGAs. These projects comprise Category B NDRRA funding for the restoration component of the works, a capped allocation from the Betterment fund for betterment works and Council contributions. Betterment projects include improved bridges, floodways, culverts, levees, water treatment plants and numerous roads across Queensland.

To date, over 120 Betterment projects worth more than \$80 million, and including \$36 million funding from the Betterment fund, have been reported to the Authority as practically complete. The remaining approved projects are due to be complete by 30 June 2014 and are expected to utilise the remaining funding from the \$80 million Betterment cap.

Betterment funding is allocated on the basis of the estimated cost of the approved projects. Should the betterment component of a project be delivered for a cost below the capped allocation, then the savings will be returned to the Betterment Fund for allocation to other eligible projects.

Section four: Progress Reports



4.1 Iconic projects in reconstructing Queensland*

Project	Value (\$m)	Description	Status
BCC Ferry Terminals (Cat D)	\$73	<p>The January 2011 floods damaged all of Brisbane City Council's CityCat and City Ferry terminals. To return service as soon as possible, Council replaced the seriously damaged terminals with temporary terminals. Seven temporary terminals were built to pre-flood standards meaning that in the event of another major flood, it was likely it would need to be rebuilt again.</p> <p>Works to replace the terminals with more resilient, permanent structures are being delivered as part of a special (Category D) funding package for Brisbane City Council. The design of the new terminals integrates technical innovation, improved accessibility for all passengers and flood resilience.</p> <p>The replacement ferry terminals are located at The University of Queensland (St Lucia), Regatta (Toowong), North Quay (CBD), Maritime Museum (South Brisbane), QUT Gardens Point (CBD), Holman Street (Kangaroo Point) and Sydney Street (New Farm).</p> <p>Completion of all ferry terminal works is required by mid-2015.</p>	<p>Works have now commenced on all ferry terminal projects, and are being delivered by McConnell Dowell Constructors.</p> <p>Piling works at QUT Gardens Points started in June 2014. All marine piles and the walkway sub-structure is complete and landside works are around 95% complete. Installation of the portal frame commenced in January 2015 and cladding works progressed during the month. The terminal is expected to open in March 2015, weather permitting.</p> <p>Marine piling is complete and construction of the pier superstructure is underway for the Regatta ferry terminal. The existing temporary terminal closed in October 2014 and will remain closed while the upgrade occurs. The terminal is expected to open in March 2015, weather permitting.</p> <p>Land-based civil works commenced on the Holman Street terminal site during November 2014 and are now complete. Fabrication of the gangway and pontoon is reported to be progressing well.</p> <p>Fabrication of the gangway for the North Quay terminal is also underway. The civil works separable portion of the works are due to commence in February 2015.</p> <p>Construction of the new University of Queensland CityCat terminal began in early July 2014 and all marine piles are complete. Landside works are also substantially progressed. Completion of the terminal is expected in April 2015, weather permitting.</p> <p>Following closure of the Sydney Street terminal in January 2015, on-site construction works commenced with landside works approximately 50% completed by month end. All marine piles are also now complete. The new terminal is expected to open in May 2015, weather permitting.</p> <p>Land based works and piling works on the Maritime Museum ferry terminal started in October 2014 with all but one marine pile installed at that time. No further works will be undertaken on the structure until the terminal closure period occurs, currently scheduled for March 2015.</p>



Progress works during January 2015: - pile installation at Sydney St terminal (top left); pontoon fit-out at Regatta terminal (left); and abutment works at University of Queensland terminal (above)

* Iconic projects represent projects that may be complex or of great significance to the local community.

4.1 Iconic projects in reconstructing Queensland (continued)

Project	Value (\$m)	Description	Status
Somerset Regional Council bridges and crossings (Cat B and Cat D)	\$13m	<p>Somerset Regional Council is undertaking a series of restoration and betterment projects to make its network of bridges, crossings and culverts across the region more resilient to flooding.</p> <p>The crossings have repeatedly been damaged and in some cases destroyed through successive flood events, most recently in 2013 resulting in road closures and significant disruption to the local communities.</p> <p>Many local farmers have no practical alternative way of getting their produce to markets other than over a Council bridge. The bridges also provide many residents with the only access to their properties. In other cases, property owners are required to take lengthy detours if bridges are closed.</p> <p>The betterment works generally include the part or full replacement of existing timber bridges or causeways with sustainable concrete structures.</p>	<p>To date, four bridge and 11 crossing projects have been opened to traffic, including Jones Bridge on Gregors Creek Rd, Wunulla Lane Bridge, Scrub Creek Rd Bridge, George Bell Crossing on Ivory Creek Road, Buaraba Creek causeway on Rocky Gully Rd, Savages Bridge approaches on Banks Creek Rd and the extension of Brisbane River causeway No. 1 on Mt Stanley Rd.</p> <p>Jones Bridge on Gregors Creek Road was constructed by council day labour with the remaining works constructed by Council's approved contractor panel.</p> <p>Works on the final crossings are expected to be completed by March 2015, weather permitting.</p>
Warrego Highway (Jondaryan to Dalby)	\$41m	<p>During the Tropical Cyclone Oswald natural disaster event in January 2013, the Warrego Highway pavement and foundations were saturated, resulting in structural weakening of the asset.</p> <p>This section of the road is built on predominantly flat terrain, which makes it vulnerable to water ingress through the pavement and foundations as adjacent table drains remain full for several weeks during and after these types of weather events.</p> <p>Long lengths of pavement failures across the full pavement width resulted along many section of the Highway.</p>	<p>The road construction contract was awarded to FK Gardner & Sons Group of Toowoomba.</p> <p>Construction started in July 2014 and was completed in December. Minor defects works are currently under way and were due for completion by the end of January 2015.</p>



Council day labour crews undertaking works on replacement of Jones Bridge at Gregors Creek.



Completed works on Warrego Highway—Bowenville section

4.2 Program spotlights

2014 in review Responding to disasters

2014 was another significant year for Queensland in responding to, and progressing the recovery from natural disasters.

Across the year, the State sustained more than \$450 million damage to essential public infrastructure across 48 local government areas from 10 separate disaster events. In this time, the State faced four cyclones - Dylan, Fletcher, Gillian and Ita - and also experienced a series of major flooding, storm and rainfall events.

Tropical Cyclone Ita, which crossed the coast late in the disaster season in April 2014, was the largest cyclone to threaten Queensland since Severe Tropical Cyclone Yasi in 2011.

While the level of destruction was less, many communities were significantly affected with 16 local governments in the state's far north and northern regions activated for natural disaster assistance.

In the immediate aftermath of these events, a range of local and state agencies, including the Queensland Fire and Emergency Services (QFES) and the Authority, were deployed to assist councils with the immediate recovery and plan for the reconstruction effort.



Township of Ingham under flood following Tropical Cyclone Ita - April 2014



The Authority helped the QFES with rapid damage assessments following both Tropical Cyclone Ita and, more recently, the severe Brisbane storm in November 2014. In addition, the Authority provided mapping support to help identify the areas with the highest need for assistance and provided regular information updates for the Queensland Disaster Management Committee.

Following Cyclone Ita, more than 8700 homes were assessed for damage using the Damage Assessment and Reconstruction Monitoring system (DARMSys™). The Authority also conducted more than 11,000 damage assessments on essential public infrastructure with more than 94,000 photographs taken in the process. The data was gathered rapidly in a concerted effort to fast-track the 2014 program of works into project delivery.

Following the Brisbane Storm, the damage assessment teams undertook more than 3300 damage assessments in the three days following the event.

For all events, the Authority has been available to assist councils undertake infrastructure damage assessments, and provide on-the-ground guidance and support to councils to progress the recovery and reconstruction.

Left: i-DARM and DARM assessment teams assessing damage in Proserpine (Whitsunday Regional Council) following Tropical Cyclone Ita (top) and in Brisbane following the November 2014 severe storm (bottom)

4.2 Program spotlights (continued)

2014 in review Progressing recovery and resilience



Delivery agents maintained the momentum of reconstruction throughout 2014 reporting spend of approximately \$2 billion on progressing works across the year.

A significant milestone was reached on 30 June 2014, marking the completion of the biggest reconstruction effort in Australia's history. The majority of reconstruction works from the devastating floods and cyclones of early 2011 and the series of events in the summer of 2011-12 were required to be finished by that date. The Queensland Government and the Authority had worked closely with local councils, DTMR and other state agencies to ensure \$8.3 billion worth of works had been completed as quickly as possible, creating stronger communities across the State.

Left: Opening of the completed Riverwalk—September 2014

Beyond June, the focus on reconstruction continued with a significant program remaining to finalise works from the disaster events of 2012, 2013 and 2014. Major projects completed during 2014 included Brisbane's \$72 million Riverwalk project, the Palm Island Seawall, DTMR works on the Warrego, Mitchell, Burnett, Cunningham, Bruce, Landsborough and Dawson Highways and more than 100 projects across the State funded through the \$80 million Betterment fund.

2014 saw the balance of the Betterment fund allocated to approved projects and the majority of projects proceed into construction. Betterment projects completed by year's end including upgrades to the Margate and Bongaree Seawalls (Moreton Bay Regional Council), Yarrabah Range Road (Yarrabah Aboriginal Shire Council), the Gayndah Water Intake Station and Gayndah Mundubbera—Road (North Burnett Regional Council) and a series of betterment projects on Palm Island, which immediately passed their first test when Tropical Cyclone Dylan passed over the Island shortly after completion.

A number of delivery agents were also recognised for their excellence in the delivery of NDRRA works in 2014. Amongst others, DTMR, North Burnett Regional Council and the Reconstructing Cardwell project received major awards in relation to the procurement, project management and engineering excellence of their reconstruction programs. The Queensland Flood Mapping Program, which was initiated by the Authority and Department of Natural Resources in 2011 and has assisted over 100 flood prone towns with a rapid hazard assessment and fit-for-purpose flood mapping, was also recognised at the 2014 Resilient Australia Awards.

Concurrent with overseeing the delivery of works, a key focus for the Authority during 2014 was the acquittal of completed works. Acquittal of works through the lodgement of audited Claims to the Commonwealth is a key step to securing reimbursement of the Commonwealth's contribution to the reconstruction program. The 2012-13 Claim worth \$2.65 billion was finalised during the first half of year and the second half of the year saw commencement of the process to acquit the approximate \$6 billion program of works from the 2011, 2012, 2013 and 2014 disaster periods completed prior to 30 June 2014. When submitted to the Commonwealth in mid-2015, the claim will be the largest in Australia's history.

Looking forward, the joint focus on delivery and acquittal remains into 2015 as reconstruction works continue to be delivered on the ground and the current claim for acquittal is progressed and lodged with the Commonwealth. The Authority has also already commenced the process for preparing the next claim, which will acquit works completed through to June 2015.

The Authority and other agencies also remain ready to stand up and respond should additional natural disasters strike through the year.



The completed Palm Island seawall reconstruction project - July 2014



Yarrabah Range Road betterment project following completion—September 2014

4.2 Program spotlights (continued)

Banana Shire Council Linkes Road betterment project

Located approximately 12km from Biloela town centre, Callide Creek culvert crossing on Linkes Road was severely damaged as a result of the Tropical Cyclone Oswald and Associated Rainfall and Flooding event in January 2013. The inundated road was completely impassable and closed for up to three months following the floods.

Linkes road is a rural major collector road and is the main access to Callide Power Station and Callide Mine. As the spillway of Callide Dam discharges into Callide Creek, the crossing can be submerged by any flood event that hits the area.

Recognising the importance of the road to neighbouring communities and workforces of the power station and coal mine, Council was approved a betterment proposal to make the road more resilient to flood.

The betterment project involved the relocation of the existing concrete box culverts to suit a re-alignment of the road to provide a better approach to the new floodway. Three extra cells were also added because the existing creek channel was altered, thus changing the flow of water. Designers determined that a re-alignment was necessary to provide traffic with a safe approach to the creek crossing.

Complicating the construction project, Callide Creek always has water flows and a major challenge was to construct the culvert with water still flowing in the creek. During construction, Sunwater stopped discharging from Callide Dam for a period of eight weeks. During this time Council constructed the base slab, installed the culvert crowns and the batter protection.

Council's Director of Infrastructure Services, Mr Frank Nastasi, said that the project was a credit to Council's workforce and feedback from the community indicated that the general public was also pleased with the final product.

Major works commenced in June, 2014 and project was completed in late August 2014 at a total cost of approximately \$460,000.



Damage to Callide Creek culvert crossing on Linkes Road after Tropical Cyclone Oswald



Above: Reconstruction and betterment works underway



Callide Creek culvert crossing on Linkes Road betterment project after completion

4.2 Program spotlights (continued)

DTMR

Reconstruction program leaves living legacy in Bundaberg

In addition to reconnecting the Queensland community through reconstruction works, contractors on DTMR's Transport Network Reconstruction Program are leaving a legacy through other community initiatives.

Lend Lease Engineering was involved in the delivery of reconstruction works across sections of the state-controlled road network in the Bundaberg area following the flood events in recent years.

In early August 2014, Lend Lease planted 400 native rainforest and eucalypt trees in the Barolin Nature Reserve, adjacent to Bargara State School, leaving a living legacy to the local community.

The project was a joint initiative of the Lend Lease Foundation and Bundaberg Regional Council, which is the trustee of the reserve.

Local Lend Lease Project Director, Gary Ikin, said the tree planting day was a way for Lend Lease employees to show their commitment and pride in Bundaberg.

"Today we see a practical way that our employees can assist the natural environment, in line with Lend Lease's global focus on sustainability – together, we make a difference to the communities where we live and work," Mr Ikin said.

"Our employees and the whole community can come back year after year and see the trees as they grow up – a living legacy for the Bundaberg community."

As part of the tree planting activity, the team also reused excess mulch material recovered from vegetation clearing activities at reconstruction work sites in the Bundaberg area.



Lend Lease Project Manager Gary Ikin receives a certificate of appreciation from Bundaberg Regional Council at the community tree planting day



Native trees planted at the Barolin Nature Reserve

**Section five:
Communications**



5.0 Communications

The Authority is focused on building stakeholder confidence in the reconstruction by ensuring consistent and regular communication of public information.

5.1 Communicating progress

Media analysis

There has been a total of 131 media items in January 2015 (74 print – 56%, 28 TV – 21%, 29 radio – 22%), which reached a cumulative audience of over 3.6 million people, with the focus this month being on the 2014 year in review, disaster season preparedness and new events, and proposed changes to NDRRA funding.

There were media mentions for regions recovering and rebuilding from natural disasters across Queensland, including articles in the Cairns Post, Townsville Bulletin, The Australian, The Courier-Mail, North West Star, Herbert River Express, Innisfail Advocate, Whitsunday Times, Queensland Times, Toowoomba Chronicle, News Mail Bundaberg, Tully Times, Queensland Country Life, Hervey Bay City Independent, Port Douglas & Mossman Gazette, Fassifern Guardian, Bowen Independent, Gympie Times, Noosa News, Tamborine Times, Longreach Leader, Daily Mercury, Fraser Coast Chronicle and the Oakey Champion; TV coverage on Sky News, the ABC, WIN and Seven networks throughout the State; and radio mentions, including on ABC Radio Queensland, Radio National, 4WK Toowoomba, 4BC, Hot Tomato Gold Coast, 4CA Cairns, and Radio 4KZ Innisfail.

There were also articles covering localised flooding in Mount Isa in the Longreach Leader and the North West Star, as well as for the Banana Shire with articles in the Central Queensland News and the Rural Weekly.

The replacement of two bridges in the Scenic Rim received coverage on local radio together with articles featuring in The Tamborine Times and the Fassifern Guardian. The final stages of Western Downs Regional Council’s multi-phased Regional Flood Recovery Works Program received coverage on radio 4WK together with articles featuring in The Toowoomba Chronicle.

Communications

There are a number of methods available to the public to communicate with the Authority.

The Authority’s website provides information to the public and continues to be enhanced with ongoing updates, including information about Betterment projects. There has been a large number of visits to the website since it was launched on 18 February 2011. At 31 January 2015, total website visits amounted to 452,154 - an increase of 0.5% since last month. *(See Figure 5.1.1)*

In January, the Authority received an additional 25 calls to its dedicated hotline and 193 additional pieces of written correspondence were received. *(See Figure 5.1.2)*

Fig. 5.1.1 Website traffic

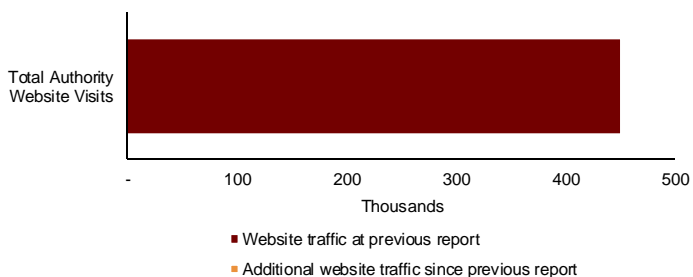
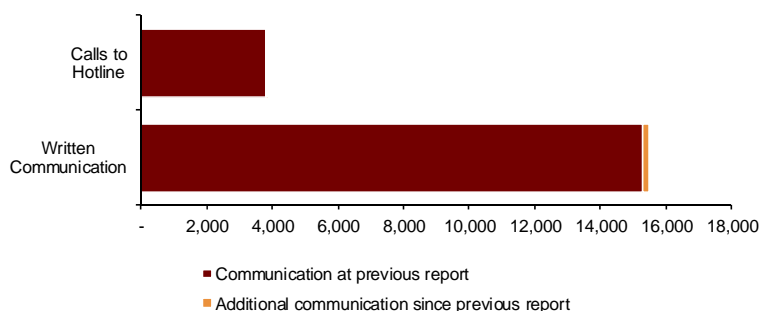


Fig. 5.1.2 Communications



(Source: the Authority at 31 January 2014)

Work starts this week on new Kingsthorpe bridge

Construction works on the new Kingsthorpe-Haden Road bridge are planned to start Tuesday, January 27, weather permitting.

The works include construction of a higher, more flood resilient concrete bridge on a new road alignment approximately 30 metres to the east of the existing bridge with completion expected by mid-June, weather permitting.

Cr Carol Taylor said Civil Mining and Construction would be carrying out the works on behalf of the council.

"The works have been planned to ensure minimal disruption to the local community," Cr Taylor said.

Work will generally be undertaken between 7am and 5pm, Monday to Friday. However some out-of-hours works may be required in which case local residents will be informed ahead of the works.



Motorists are asked to please observe all road signage and follow traffic control instructions during this time.

The council will make every effort to minimise disruption to the local community during construction.

The council apologises for any inconvenience caused and appreciate your patience during this time.

These works have been funded by the Natural Disaster Relief and Recovery Arrangements with 75 per cent of funding coming from the Federal Government and 25 per cent from the State Government.

High Country Herald, 27 January 2014

Canungra bridges to be replaced

TWO bridges south of Canungra will be replaced after council awarded a \$1 million contract to EPOCA Constructions for the works.

Site preparation works at Murphy Bridge and Geiger Bridge are expected to start after Australia Day.

The project is being funded under the Natural Disaster Relief and Recovery Arrangements, with the Queensland Reconstruction Authority (QRA) approving betterment funds to replace the two timber bridges with new concrete structures.

Council is also contributing \$150,000 to the project.

Acting Mayor and Division Three Councillor, Virginia West, said the replacement of Murphy and Geiger bridges was great news for local residents and landholders.

"The QRA had previously approved the necessary repair works, however the allocation of betterment funding to both bridge projects means council can now deliver a more resilient asset which will meet the needs of the local community for many years to come, she said.

"Both bridges sustained substantial damage during flooding in Canungra Creek following ex-Tropical Cyclone Oswald in 2013.

"Floodwaters snapped a bridge pile under Murphy Bridge, causing the structure to bow, while Geiger Bridge sustained damage to both its piers and abutments."

Council remains on track to complete its 2013 disaster restoration program by mid-2015.

Beaudesert Times, 21 January 2015

Disaster funds are welcomed

FLYNN MP Ken O'Dowd welcomed disaster assistance activation for Banana Shire Council following heavy rainfall and flooding from December 8-14, 2014. The assistance was being provided through the jointly funded Commonwealth-State Natural Disaster Relief and Recovery Arrangements to support the clean-up effort.

Gladstone Observer, 21 January 2015

Two Flood-damaged Canungra Bridges To Be Replaced

Murphy Bridge and Geiger Bridge south of Canungra are to be replaced with new concrete bridges as part of Council's disaster restoration program. Council has awarded a contract of \$1.080 million to EPOCA Constructions to undertake the bridge replacement works, with site preparation works expected to commence after Australia Day, weather permitting.

The project is being funded under the Natural Disaster Relief and Recovery Arrangements, with the Queensland Reconstruction Authority (QRA) approving betterment funds to replace the two timber bridges with new concrete structures, an outcome will provide a higher level of resilience during future flood events.

Council is also contributing \$150,000 to the project as part of its complementary works program which delivers additional enhancements in conjunction with disaster restoration works where it represents value for money to the community or long-term improvements were already planned.

Acting Mayor and Division 3 Councillor, Virginia West, (pictured at Geiger Bridge) said the replacement of Murphy and Geiger bridges was great news for local residents and landholders.

Both bridges sustained substantial damage during flooding in Canungra Creek following ex-Tropical Cyclone Oswald in 2013. Floodwaters snapped a bridge pile under Murphy Bridge, causing the structure to bow, while Geiger Bridge sustained damage to both its piers and abutments.



Tamborine Times, 22 January 2015

Ita repairs start at last

REPAIR works have started on Tully Gorge Rd, nine months after cyclone Ita hit the Far North.

It's the first of 23 roads across the Cassowary Coast to benefit from \$2.83 million for rain and flood damage repair.

Cassowary Coast Mayor Bill Shannon said the work was part of council's Natural Disaster Relief and Recovery program funded by the state and federal governments.

Other roads to receive funding are in the Daradgee region north of Innisfail, Mourilyan, Cowley and Tully.

Cairns Post, 29 January 2015

Bridge, road work set to begin soon

WORK will begin soon on Still St in Tully and Shrocks Bridge at Silkwood as part of the Cassowary Coast Regional Council's \$26.3 million capital works program and \$18.4 million 2013 and 2014 disaster recovery programs for cyclones Oswald and Ita.

The two work programs include more than 400 projects, ranging from roadwork, bus shelter upgrades and bridge replacements to water meter replacements, sewerage pump and pipe upgrades and renewal work on boating facilities. Recently completed works include an upgrade to Etty Bay Rd near Mourilyan, a Mena Creek Bridge refurbishment, rehabilitation of Warrami Rd Bridge south of Tully and rectification of Tully Gorge Rd landslips.

Projects soon to be completed include restoration of Ellerbeck Rd south of Tully, a stormwater drainage upgrade at Ernest St in Innisfail, a new section of riverside pathway on McGowan Drive in Innisfail and replacement of the Daveson Rd trunk main to Mission Beach.

Innisfail Advocate, 28 January 2014

FKG wins tender

TOOWOOMBA Regional Council has awarded the contract to upgrade Middle Road at Anduramba and make repairs to Anduramba Range Road to FK Gardner & Sons valued at \$3.7 million.

The Toowoomba-based firm's project tender was considered the best value for money and management of risk by the council.

The upgrade is part of the council's Natural Disaster Relief and Recovery Arrangements flood recovery program and follows multiple land slips on Anduramba Range Road during flooding in 2011 and again in 2013.

Toowoomba Chronicle, 30 January 2014

FLOOD RECOVERY AND RELIEF ACROSS REGION

HEAVY rainfall has had a big impact on the Banana Shire, with the latest flood event coming just last month.

So the activation of disaster assistance for

Banana Shire Council has been welcomed.

The assistance is provided through the jointly-funded Commonwealth-State Natural Disaster Relief and Recovery

Arrangements to support the clean-up effort and to ensure damaged public infrastructure is restored as quickly as possible.

Federal Member for Flynn

Ken O'Dowd said parts of the community had been isolated by flooding and there was damage across the shire.

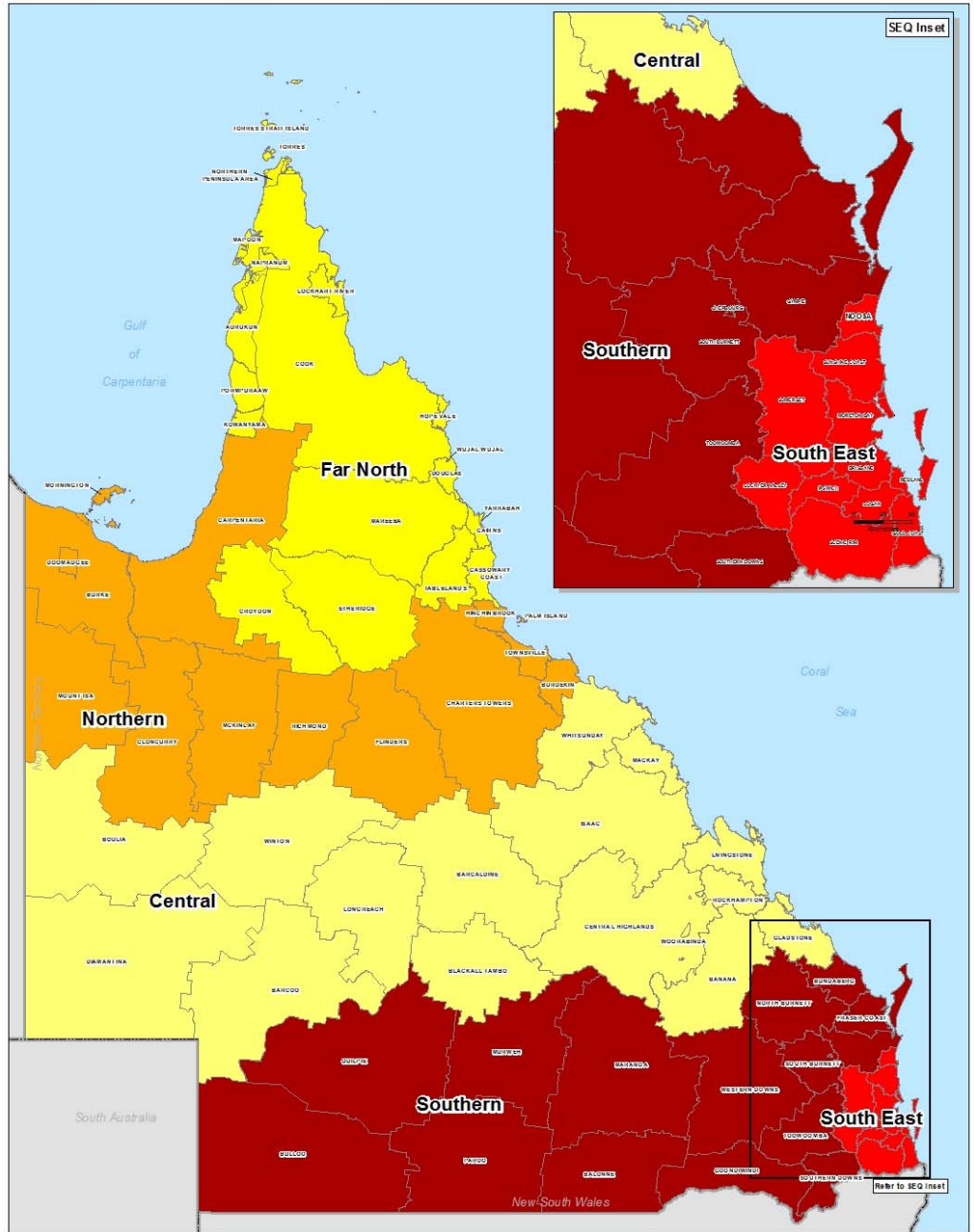
Visit at disaster.qld.gov.au and disasterassist.gov.au.

Rural Weekly, 23 January 2014

Appendices

Appendix A: Local Government Areas by Region

Region	Local Government Areas (LGA's)
Far North Queensland (FNQ)	ASC Aurukun Shire Council CRC Cairns Regional Council CCRC Cassowary Coast Regional Council CoSC Cook Shire Council CrSC Croydon Shire Council DSC Douglas Shire Council ESC Etheridge Shire Council HVASC Hope Vale Aboriginal Shire Council KASC Kowanyama Aboriginal Shire Council LRASC Lockhart River Aboriginal Shire Council MASC Mapoon Aboriginal Shire Council MbaSC Mareeba Shire Council NASC Napranum Aboriginal Shire Council NPARC Northern Peninsula Area Regional Council PASC Pormpuraaw Aboriginal Shire Council TRC Tablelands Regional Council TSC Torres Shire Council TSIRC Torres Strait Island Regional Council WWASC Wujal Wujal Aboriginal Shire Council YASC Yarrabah Aboriginal Shire Council
North Queensland (NQ)	BrdSC Burdekin Shire Council BrkSC Burke Shire Council CSC Carpentaria Shire Council CTRC Charters Towers Regional Council ClSC Cloncurry Shire Council DASC Doomadgee Aboriginal Shire Council FSC Flinders Shire Council HSC Hinchinbrook Shire Council McSC McKinlay Shire Council MoSC Mornington Shire Council MICC Mount Isa City Council PIASC Palm Island Aboriginal Shire Council RSC Richmond Shire Council TCC Townsville City Council
Central Queensland (CQ)	BanSC Banana Shire Council BarRC Barcaldine Regional Council BarSC Barcoo Shire Council BTRC Blackall-Tambo Regional Council BOSC Boulia Shire Council CHRC Central Highlands Regional Council DSC Diamantina Shire Council GSC Gladstone Regional Council IRC Isaac Regional Council LSC Livingstone Shire Council LRC Longreach Regional Council MacRC Mackay Regional Council RRC Rockhampton Regional Council WRC Whitsunday Regional Council WSC Winton Shire Council WASC Woorabinda Aboriginal Shire Council
Southern Queensland (SQ)	BaISC Balonne Shire Council BSC Bulloo Shire Council BRB Bundaberg Regional Council CASC Cherbourg Aboriginal Shire Council FCRC Fraser Coast Regional Council GoRC Goondiwindi Regional Council GRC Gympie Regional Council MarRC Maranoa Regional Council MuSC Murweh Shire Council NBRC North Burnett Regional Council PSC Paroo Shire Council QSC Quilpie Shire Council SBRC South Burnett Regional Council SDRC Southern Downs Regional Council ToRC Toowoomba Regional Council WDRC Western Downs Regional Council
South East Queensland (SEQ)	BCC Brisbane City Council GCCC Gold Coast City Council ICC Ipswich City Council LVRC Lockyer Valley Regional Council LCC Logan City Council MBRC Moreton Bay Regional Council NSC Noosa Shire Council RCC Redland City Council SRRC Scenic Rim Regional Council SRC Somerset Regional Council SCRC Sunshine Coast Regional Council



Disclaimer:
This map has been prepared by the Dept of Community Safety.
Other users may verify whether this is accurate and suitable for their purposes.
The Queensland Reconstruction Authority does not warrant the accuracy or completeness of the information shown on this map.

Local Government Areas and QldRA Reporting Regions

Scale at A4: 1:6,700,000

Legend

- Far North Queensland
- North Queensland
- Central Queensland
- Southern Queensland
- South East Queensland
- Local Government Areas

As at 5/02/2014



This page left blank intentionally

