



OCTOBER 2012

MONTHLY REPORT

**Queensland Reconstruction
Authority**

Document details:

Security classification	Public
Date of review of security classification	October 2012
Authority	Queensland Reconstruction Authority
Author	Chief Executive Officer
Document status	Final
Version	1.0

Contact for Enquiries:

All enquiries regarding this document should be directed to:

Queensland Reconstruction Authority

Phone the call centre - **1800 110 841**

Mailing Address

Queensland Reconstruction Authority

PO Box 15428

City East Q 4002

Alternatively, contact the Queensland Reconstruction Authority by emailing info@qldra.org.au

Licence

This material is licensed under a [Creative Commons - Attribution 3.0 Australia licence](#).



The Queensland Reconstruction Authority requests attribution in the following manner:

© The State of Queensland (Queensland Reconstruction Authority) 2011-2012

Information security

This document has been classified using the [Queensland Government Information Security Classification Framework \(QGISCF\)](#) as PUBLIC and will be managed according to the requirements of the QGISCF.

Message from the Chief Executive Officer

Major General Richard Wilson AO
Chairman
Queensland Reconstruction Authority

Dear Major General Wilson

It is with pleasure that I present the October 2012 Monthly Report – the twentieth report to the Board of the Queensland Reconstruction Authority (the Authority).

The Authority was established under the *Queensland Reconstruction Authority Act 2011* following the unprecedented natural disasters which struck Queensland over the summer months of 2010-11. The Authority is charged with managing and coordinating the Government's program of infrastructure renewal and recovery within disaster-affected communities, and the Authority's role will focus on working with our state and local government partners to deliver best practice expenditure of public reconstruction funds.

On 26 September 2012, the State Government decided to extend the term of the Authority's operations to June 2014. As such, the Authority will continue to monitor progress across the established lines of reconstruction as well as providing the resourcing and support necessary to build the momentum of reconstruction.

The Pipeline of works now includes all events actively managed by the Authority (2009 to 2012) with an estimated program value of \$12.2 billion. The State-wide Reconciliation indicates that:

- \$5.5 billion of works is in 'Works Delivered';
- \$2.7 billion of works is in 'Tender Awarded or Under Construction';
- \$375.4 million of works is in 'Tender Under Consideration'; and
- there is \$881.9 million of 'Near Term' works.

Significant progress has been made against the six Lines of Reconstruction and key tasks outlined in Operation Queenslander for the 2010-11 event period. Indeed, many reactivated key tasks as a result of the 2011-12 event period have also been completed. These include:

- Human and social: seven key tasks are complete for 2010-11 events and three for 2011-12;
- Economic: 20 key tasks are complete for 2010-11 events and all ten key tasks are now complete for 2011-12;
- Environment: ten key tasks are complete for 2010-11 events and three for 2011-12 events;
- Building recovery: all key tasks are complete;
- Roads and Transport: nine key tasks for 2010-11 are complete and three for 2011-12 events; and
- Community Liaison and Communication: five key tasks for both event periods are now complete.

The final DARMsys™ audit is planned to be undertaken in October in the Western floods region. The Authority has no more planned reconstruction audits as all audits will then be completed for areas affected by the 2012 disaster events. Of the 1,400 residential properties that were damaged over the 2012 event period, in excess of 95% have been repaired or have work commenced. In the cases where no work has commenced, these details are passed to local government and the Department of Communities, Child Safety and Disability Services (DCCSDS).

Following the success of the DARMsys™ audit process, the Authority has commenced using the devices for monitoring the progress of inspections to roads reconstruction across the State. Updates will be introduced into future monthly reports when available.

I commend the report to you and recommend its release to the Minister and the public pursuant to Section 41 of the *Queensland Reconstruction Authority Act 2011*.

Yours sincerely



Graeme Newton
Chief Executive Officer
Queensland Reconstruction Authority

Contents

1.0 Framing the challenge	1
1.1 Operation Queenslander	2
Timeline of activations	3
1.2 Events managed by the Authority	4
2.0 State of the State - Progress Snapshot	5
2.1 Current status	6
3.0 State of the State - Pipeline of Works	7
3.1 State-wide Pipeline of Works	8
3.2 Program of works	9
3.3 Media reports on progress	10
4.0 State of the State - Progress by Line of Reconstruction	11
4.1 Human and Social	12
4.2 Economic	15
4.3 Environment	18
4.4 Building Recovery	20
4.5 Roads and Transport	24
4.6 Community Liaison and Communication	31
5.0 State of the State - Disaster Assistance	35
5.1 Disaster Assistance by event period - 2010/2011	36
5.2 Disaster Assistance by event period - 2011/2012	37
5.3 Queensland Disaster Assistance Framework	38
6.0 State of the State - Planning and Authority Projects	39
6.1 Planning	40
6.2 DARMsys™	42
Appendix A: Local Government Areas by Region	43



Section one: Framing the challenge

Operation Queensland, led by the Queensland Reconstruction Authority, is the State Plan that articulates Queensland's reconstruction strategy and the framework for recovery from natural disaster events since 2010/2011.

1.0 Framing the Challenge

Between November 2010 and April 2011, Queensland was struck by a series of natural disasters. Extensive flooding caused by periods of extremely heavy rainfall, destruction caused by a number of storm cells including Cyclones Tasha, Anthony and Yasi, and subsequent monsoonal flooding including in the Maranoa, have resulted in all of Queensland being declared as disaster affected.

In response to the disaster events the Queensland Government established the Queensland Reconstruction Authority (the Authority), pursuant to the Queensland Reconstruction Authority Act 2011. On 26 September 2012, the State Government decided to extend the term of the Authority's operations to June 2014 and the Act will be amended to reflect this new timeframe.

The Authority's mission is to reconnect, rebuild and improve Queensland communities and its economy.

The Authority's role was extended to cover historical and continuing disaster events in Queensland. The natural disaster events that led to the creation of the Authority, and the events that the Authority has since been charged with managing, are summarised on the following page.

1.1 Operation Queenslander

The activities of the Authority will occur under the auspices of a comprehensive and integrated State Community, Economic and Environmental Recovery and Reconstruction Plan, also known as **Operation Queenslander** (the State Plan or Plan). This Plan outlines a roadmap, based on six lines of reconstruction, that provides strategic level guidance for the recovery work that has already begun and a framework for rebuilding a more resilient Queensland.

The Authority is responsible for providing central coordination, control, funding and reporting across these activities. Responsibility for delivery is decentralised across responsible agencies aligned with the six lines of reconstruction.

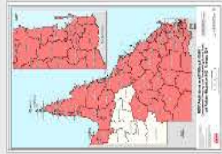
The Lines of Reconstruction will continue to evaluate the key tasks for the natural disasters managed by the Authority, whilst concurrently responding to current and emerging events designated to be managed by the Authority.

The six lines of reconstruction and the Department or Agency with primary responsibility for each are outlined below.

Line of Reconstruction	Primary Responsibility
Human and Social - to restore and strengthen local human services and community capacity through provision of direct assistance individuals and communities, and supporting communities to drive and participate in their own recovery	Department of Communities, Child Safety and Disability Services (DCCSDS)
Economic - to set the conditions to facilitate the rapid restoration of a competitive, sustainable Queensland economy	Department of State Development, Infrastructure and Planning (DSDIP)
Environment - to recover and conserve disaster-affected terrestrial and marine natural resources and ensure that reconstruction activities do not cause environmental harm	Department of Environment and Heritage Protection (DEHP)
Building Recovery - to lead and coordinate the planning and implementation of all statewide building reconstruction functions	Department of Housing and Public Works (DHPW)
Roads and Transport - to manage the recovery and reconstruction of Queensland's integrated transport environment in order to reconnect Queensland communities and economies	Department of Transport and Main Roads (DTMR)
Community Liaison and Communication - to gain and maintain the confidence of Queenslanders in the reconstruction effort, by providing a regular and consistent source of coordinated public information	Department of the Premier and Cabinet (DPC)

2010/2011 events managed by the Authority

2011/2012 events managed by the Authority



Old flooding TC Anthony V30 - November 2010 - February 2011



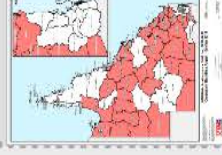
Severe Tropical Cyclone Yasi V22 - 2 February 2011 - March 2011



Qld Monsoonal Flooding V6 - 28 February 2011 - March 2011



South West Flooding V3 - April 2011



Queensland Bushfires V5 - August - October 2011



Localised Heavy Rainfall Northern Queensland V1 - October 2011



Southern Queensland Flooding V3 - November - December 2011



South East Queensland Heavy Rainfall and flooding V2 - 23-26 January 2012



Western Queensland Tropical Low V12 - 27 January - February 2012



Far-Northern Queensland Tropical Low V4 - 3-4 February 2012



North Coast Storms and flooding & East Coast Hybrid Low V7 - 24 February - 7 March 2012



Northern & Far Northern Queensland Heavy Rainfall & Flooding V10 - 15 March 2012

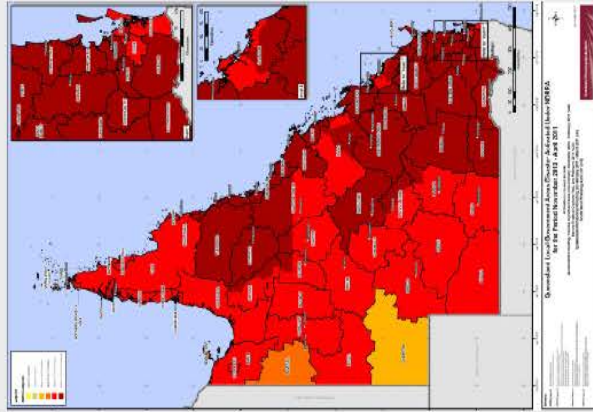


East Coast Low V2 - 22 March 2012

Nov Dec Jan Feb Mar Apr May Jun Jul Aug Sept Oct Nov Dec Jan Feb Mar Apr May June

2010

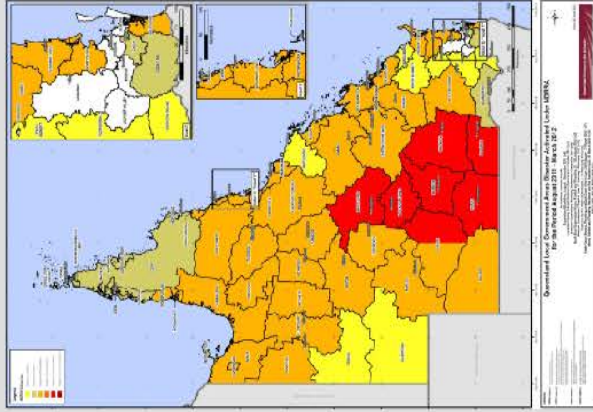
2010



2010-2011 events managed by the Authority (at May 2012)

2011

2012



2011-2012 events managed by the Authority (at 30 June 2012)

1.2 Events managed by the Authority

2011-2012 natural disaster events managed by the Authority:

- Queensland Bushfires, August to October 2011
- Localised Heavy Rainfall Northern Queensland, October 2011
- Southern Queensland Flooding, November to December 2011
- South East Queensland Heavy Rainfall and flooding, 23-26 January 2012
- Western Queensland Tropical Low, 27 January to February 2012
- Far Northern Queensland Tropical Low, 3-4 February 2012
- North Coast Queensland Storms and flooding and East Coast Hybrid Low, 24 February - 7 March 2012
- Northern and Far Northern Queensland Heavy Rainfall & flooding, 15 March 2012
- East Coast Low, 22 March 2012

2010-2011 natural disaster events managed by the Authority:

- Queensland Flooding and Tropical Cyclones Tasha and Anthony, November 2010 to February 2011
- Severe Tropical Cyclone Yasi on 2 February 2011
- Queensland Monsoonal Flooding Event on 28 February 2011,
- South West Flooding, April 2011

Pre 2010-2011 events managed by the Authority:

- South East and North Coast Queensland East Coast Low, August 2007
- Central and Southern Queensland storms, October 2007
- South West Queensland storms and flooding, 23-30 November 2007
- Central Western Queensland storms and flooding, December 2007
- South East Queensland East Coast Low, December 2007 - January 2008
- Queensland Monsoonal flooding, January 2008
- Queensland Monsoonal flooding, February - March 2008
- South East and Western Queensland storms and flooding, 3-8 February 2008
- South East Queensland storms, 29 May - 2 June 2008
- South West Queensland flooding, June 2008
- Queensland storms and associated flooding, 16-22 November 2008
- Baralaba storms, 7 December 2008
- Queensland Monsoonal flooding and Tropical Cyclone Charlotte and Ellie, January - February 2009
- Tara storms, 15 February 2009
- Tropical Cyclone Hamish, 5-11 March 2009
- Sunshine Coast, Gympie and Fraser Coast flooding, April 2009
- South East Queensland Low, May 2009
- Queensland Bushfires, September – October 2009
- South West Flooding, 20 – 25 November 2009
- Northern, Central and South West Queensland Flooding, 22 December 2009 to 8 January 2010
- Queensland Monsoonal Flooding and Tropical Cyclones Olga, Neville, Ului and Paul, January to April 2010
- 2010 South East Queensland Flooding, 9-12 October 2010
- South West Queensland Low and Associated Flooding, September 2010



Section two:
State of the State - Progress Snapshot

2.1 Current Status

During the period 1 July 2011 to 30 June 2012, there were a total of nine activations for Commonwealth and State Natural Disaster Relief and Recovery Arrangements (NDRRA), involving 65 of Queensland's 73 Local Government Authorities (LGAs). At 30 June 2012, 65 of the 73 LGAs in Queensland remained activated, while eight (8) LGAs had not been affected during the disaster period. There have been no new activations since 30 June 2012.

During the 2010/2011 (November 2010 - 30 June 2011) disaster event period, there were four (4) events with 105 activations across Queensland's 73 LGAs. *See Figure 2.1*

During the 2011/2012 (1 July 2011 - 30 June 2012) disaster event period, there were nine (9) events with 124 activations across 65 affected LGA's. *See Figure 2.2.*

Fig. 2.1 Number of LGA's impacted by event - 2010/2011 events

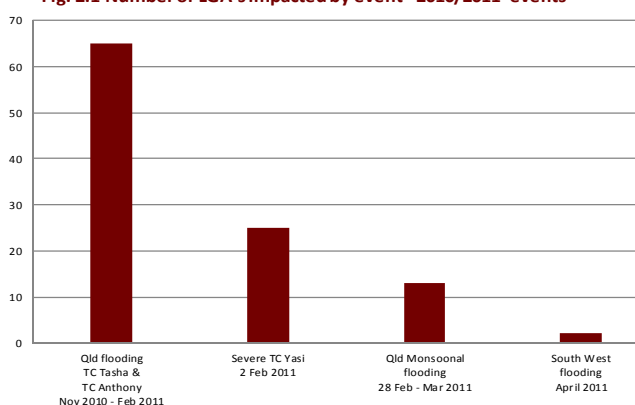
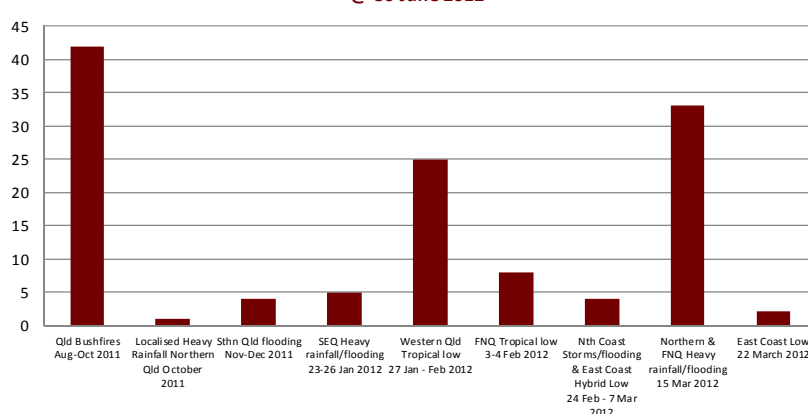


Fig. 2.2 Number of LGA's impacted by event - 2011/2012 events @ 30 June 2012



Scale of Impact	2010/2011 Events	2011/2012 Events
LGA's disaster activated	73	65
Residential properties affected	136,000	1,400
State road network affected (kms)	20,610	10,890
State rail network affected (kms)	4,748	4,180
Schools affected	411	7
Other government buildings affected	4,381	135
Homes and businesses without power	480,000	9,000
National parks affected	162	22
Insurance - claims (Source: ICA 28 March 2012)	131,935	6,408
Insurance - Estimated reserve value	\$3,780M	\$124.7M



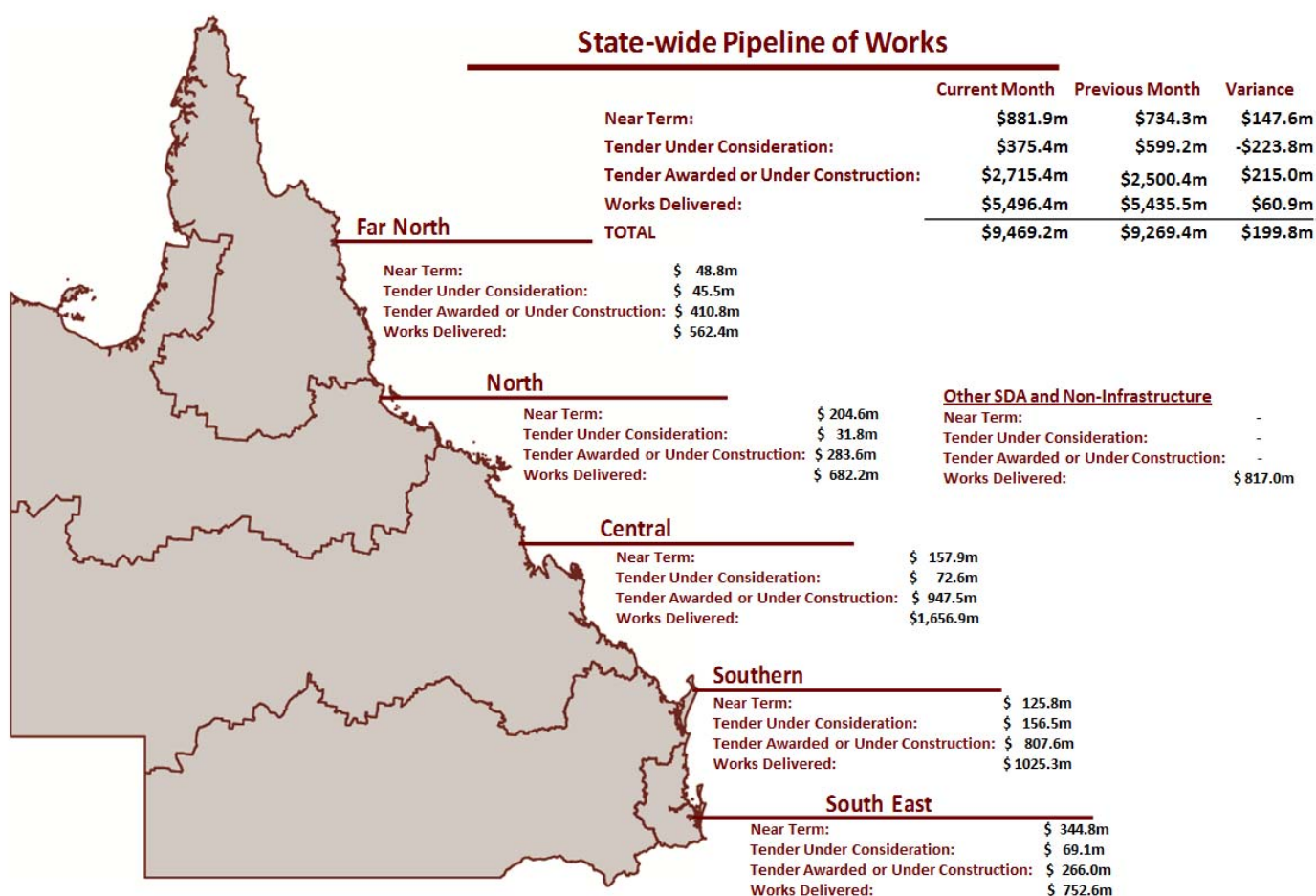
Section three:
State of the State - Pipeline of Works

3.1 State-wide Pipeline of Works

The Pipeline of works includes all events actively managed by the Authority (2009 to 2012) with an estimated program value of \$12.2 billion. Previous versions of the pipeline were based on 2010/11 events only (\$7.5 billion estimate).

The State-wide reconciliation indicates that:

- \$5.5 billion of works is in 'Works Delivered';
- \$2.7 billion of works is in 'Tender Awarded or Under Construction';
- \$375.4 million of works is in 'Tender Under Consideration'; and
- there is approximately \$881.9 million of 'Near Term' works.



(Source: the Authority: 5 October 2012)

1. The pipeline now represents all open 2009-2012 events with a cumulative value of \$12.2 billion. Previous versions of the pipeline only included the 2010/11 program of \$7.5 billion.
2. Additional works may have been conducted but are yet to be reported to the Authority
3. Other SDA and non-infrastructure encompasses SDAs other than DTMR and non-infrastructure NDRRA grants received by the Authority.

Pipeline of Works - Program Stage Description

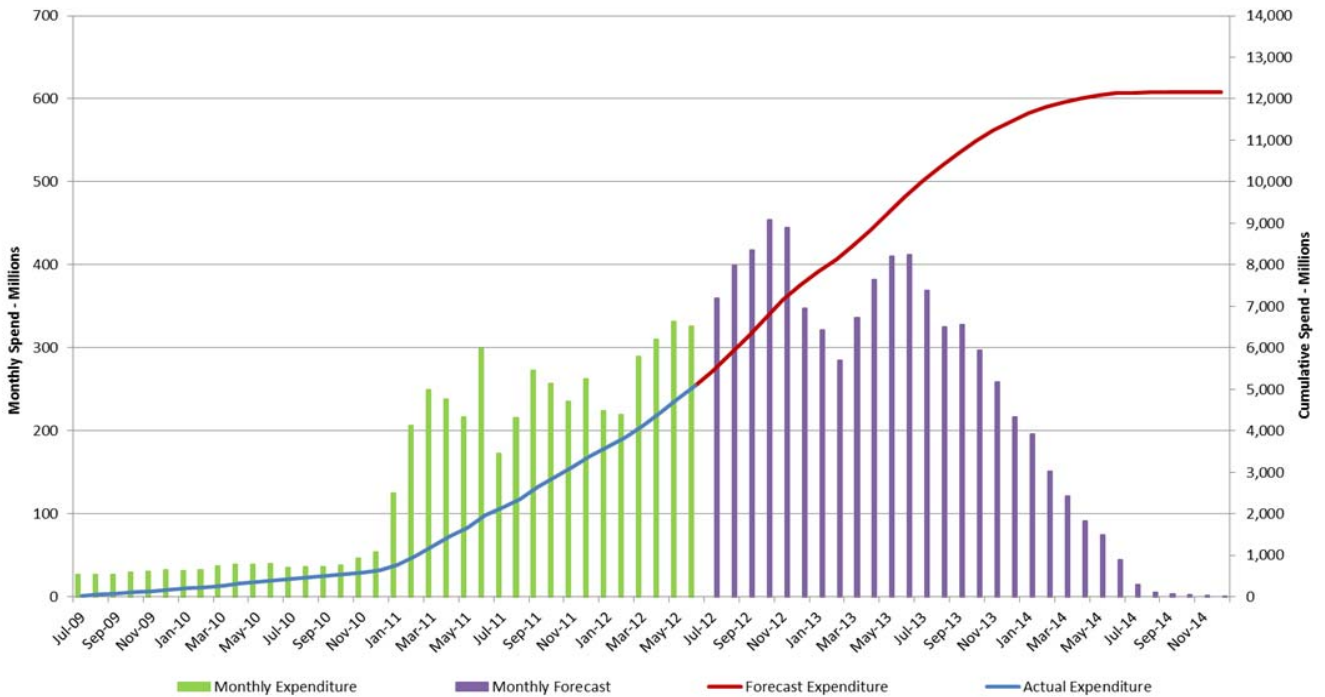
	DTMR	LGA
Near Term	Packages being prepared for tender	Applications for packages which are currently under assessment by the Authority or are awaiting additional information from the LGA
Tender Under consideration	Packages in tender process	Applications for packages which have been approved by the Authority and are in the tender or contract process.
Tender Awarded / Under Construction	Packages assessed and tender awarded, and packages under construction	Applications for packages which have been approved by the Authority and have a tender awarded or are under construction.
Works Delivered	Expenditure on packages in delivery or completed.	Expenditure on packages in delivery or completed.

3.2 Program of works

Combined Program of Works (Updated Quarterly)

The figure below represents the monthly expenditure and estimated costs for all events managed by the Authority.

Figure 3.2 Combined Program of Works



Source: the Authority: June 2012 Quarterly Review

Timing

The focus of the reconstruction effort is now shifting from approving submissions to ensuring project delivery, with the bulk of reconstruction work occurring over the next 18 months.



	Mar-11	Jun-11	Sep-11	Dec-11	Mar-12	Jun-12	Sep-12	Dec-12	Mar-13	Jun-13	Sep-13	Dec-13	Mar-14	Jun-14
Establishment & Mobilisation	Establishment & Mobilisation													
QRA mobilisation	QRA mobilisation													
Submission Preparation 2010/11	Submission Preparation 2010/11				2011/12									
Assessment and approval	Assessment and approval				2011/12									
Project Delivery	Project Delivery													
Progress payments - program monitoring and reporting	Progress payments - program monitoring and reporting													
Project Completion	Project Completion													
Acquittal and close out	Acquittal and close out													

Source: the Authority at May 2012

3.3 Media Reports

Innisfail Advocate, 1 September 2012

Cardwell repair work rolling out

THE \$12 million jointly funded project to reconstruct Cardwell's esplanade and highway is well on its way, with early works starting in the past two weeks.
Senator Jan McClean and Member for Hinchbrook Andrew Cropp went to the town on Thursday to see first hand the start of the enormous task of rebuilding after the destruction of Cyclone Yasi.



CHECK: MP Andrew Cropp, Queensland Reconstruction Authority chairman Major General Richard Wilson, Senator Jan McClean, Casuarina Coast Deputy Mayor Bruce Macdonald and Cr Glenn Palmer inspect the rock wall construction site. *Picture: John Anderson*

\$60m in next road program

COUNCIL this week launched the 2011 Natural Disaster Relief and Recovery Arrangements restoration program with an industry briefing which saw more than 90 contractors and suppliers gather at the Reef Gateway Hotel.

90 contractors attend meeting

Bowen Independent, 14 September 2012

The Ayr Advocate, 19 September 2012

City's flood-devastated playground resurrected

Queensland Times, 26 September 2012

Work is under way to resurrect the playground at the city's flood-devastated playground area.



PHOTO BY PETER ROYLE: Aerial view of Colleges Crossing being reconstructed. August 2012.

Gympie Times, 15 Sept 2012

\$186m to Wide Bay

THE Wide Bay region will receive \$185.8 million in funding in the 2012-13 financial year to progress flood restoration works, Deputy Premier Jeff Seeney announced yesterday.

Queensland Times, 6 September 2012

\$1m roads repair job at Thornton

FLOOD repairs to seven roads across the Thornton area south of Gatton will begin this week. Lockyer Valley Mayor Steve Jones said the \$900,000 flood restoration project started on Monday and would take about three weeks to complete.

Western Star (Roma), 7 September 2012

Region prepares for future floods

THE Queensland Reconstruction Authority is set to provide details of flood hazard mapping. Floods in the Roma region have caused the loss of lives and property.



WATER HAZARD: The QRA is set to provide details of flood hazard mapping of Roma.

Funding ensures repair

THE Wide Bay region will receive an estimated \$185.8 million in funding in the 2012-13 financial year to progress flood restoration works.

Fraser Coast Chronicle, 15 September 2012

Program will repair roads

WHITSUNDAY Regional Council yesterday launched the 2011 Natural Disaster Relief and Recovery Arrangements restoration program.

Daily Mercury Mackay, 12 September 2012

\$5m for Scenic Rim flood repair work

MORE than \$5m in flood repair work has been awarded by the Scenic Rim Regional Council. RDS Roadworks was awarded a \$5,157,120.90 contract to deliver the sixth construction package of the region's disaster recovery program.

Queensland Times, 27 September 2012

Whitsunday Guardian, 12 September 2012

Groper Creek repairs to jetty approved

RAIDS to the Groper Creek boat ramp and jetty are a step closer, with works approved by the Queensland Reconstruction Authority.

WRC launches restoration program

Whitsunday Regional Council (WRC) yesterday launched the 2011 Natural Disaster Relief and Recovery Arrangements (NDRRA) restoration program with an industry briefing which saw more than 90 contractors and suppliers gather at the Reef Gateway Hotel Cannonvale to discuss upcoming works.



Section four: State of the State - Progress by Line of Reconstruction

Operation Queensland is centred along six lines of reconstruction: Human and Social, Economic, Environment, Building Recovery, Roads and Transport and Community Liaison and Communication. *Operation Queensland* identifies key milestones against which reconstruction progress is measured. Each line of reconstruction sub-committee developed an Implementation Plan to support the achievement of each of these key milestones. This section reports the progress made across these lines of reconstruction and includes a summary of quantitative performance indicators.

4. Situational Report: Lines of Reconstruction

4.1 Human and Social

The objective of the human and social line of reconstruction is to assist individuals and communities to recover from the effects of the disasters.

Human and social		2010/2011 Events	2011/2012 Events	Current Status ¹
LGA's disaster activated	No. of LGAs affected	73	65	73
Educational facilities <i>(Source: DH&PW - 30 June 2012)</i>	Schools affected	411	7	418
	Schools fully repaired	411	7	418
Personal Hardship Assistance Scheme (PHAS) <i>(Source: DCCSDS - 25 September 2012)</i>	Amount paid	\$44.19M	\$3.42M	\$47.61M
	Claims granted	67,766	5,946	73,712
Australian Government Disaster Recovery Payments (AGDRP) <i>(Source: Centrelink - 13 January 2012)</i>	Amount paid	\$775.5M	-	\$776M
	Claims granted	673,480	-	673,480
Disaster Income Recovery Subsidies (DIRS) <i>(Source: Centrelink - 9 December 2011)</i>	Amount paid	\$69.5M	-	\$69.5M
	Claims granted	59,129	-	59,129
Charities and Non-Profit Groups <i>(Source: QRAA - 20 September 2012)</i>	Amount paid	\$4.92M	\$0.288M	\$4.83M

¹ Status indicates the current total impact on reported metrics for both disaster event periods.

The current state of activity:

Through the Mental Health Disaster Recovery Package (funded by the Commonwealth Government and Queensland Government through the NDRRA), community-based non-government organisations are available to assist disaster-affected individuals, carers, families and communities with emotional wellbeing and mental health support services.

At 31 July 2012, the funded organisations had:

- reported 19,956 contacts for advice, information, and referral;
- provided 2,863 people with one or more individual counselling sessions; and
- held 2,889 group sessions with a total attendance of 27,441 people.

Through the NDRRA funded Financial Counselling Program, non-government organisations are available to assist disaster-affected individuals and families with financial counselling services.

At 31 August 2012, funded organisations have provided approximately 30,800 hours of direct support to 29,235 new clients who have been specifically disaster affected.

At 25 September 2012, 73,719 Personal Hardship Assistance Scheme (PHAS) claims had been granted amounting to \$47.61 million.

The \$20 million Community Development and Recovery Package is continuing to support people and communities affected by natural disasters. As part of that package, Community Development Officers have been employed to work with Councils in 17 priority locations. Their role is to plan and implement a wide range of events and activities to support recovery and resilience-building. These events and activities have recently included:

- a pamper day for over 20 disaster affected women in Jambin;
- the production and launch of a Seniors Calender featuring social and service contacts for isolated seniors in the Somerset Region; and
- the launch of the Tinaroo/Kairi All Hazards Community Disaster Plan, which includes an awareness presentation featuring eight students who are completing their Certificate II in Public Safety – Fire fighting Operations.

(Source: DCCSDS - 25 September 2012)

Human and Social Line of Reconstruction Case example 2013 Seniors Calendar - Somerset Regional Council

During the January 2011 flooding event, seniors in the Somerset Region experienced many hardships and challenges. Their recovery has been assisted by regular participation and involvement in group projects and meetings that has culminated in an increased number of community events, particularly events that celebrate Seniors Week 2012.

The 2013 Seniors' Calendar has been developed as a resilience building activity and to assist in decreasing the effects of isolation experienced by seniors residing in the Somerset region.

Funding for the calendar was provided under the Community Development Engagement Initiative and Flexible Funding Package, which are joint initiatives of the Australian Government and Queensland Government under the Natural Disaster Relief and Recovery Arrangements.

The calendar includes photographs of local seniors groups, highlighting a positive image of ageing, and promotes awareness of the various groups and supports available to seniors in the region.



Above: Fernvale and Surrounds Social Group

This project has come together with the support of the Somerset Regional Council, Ipswich Community Aid Active Living for Seniors who are funded by the Department of Communities, Child Safety and Disability Services. Active participation from a number of seniors groups and respite organisations from across the region has been crucial to the success of the project.

Community feedback indicates that the project has helped connectivity in the community and that participants feel greater self confidence and reduced feelings of isolation.



Above: Esk 50 and Over Club

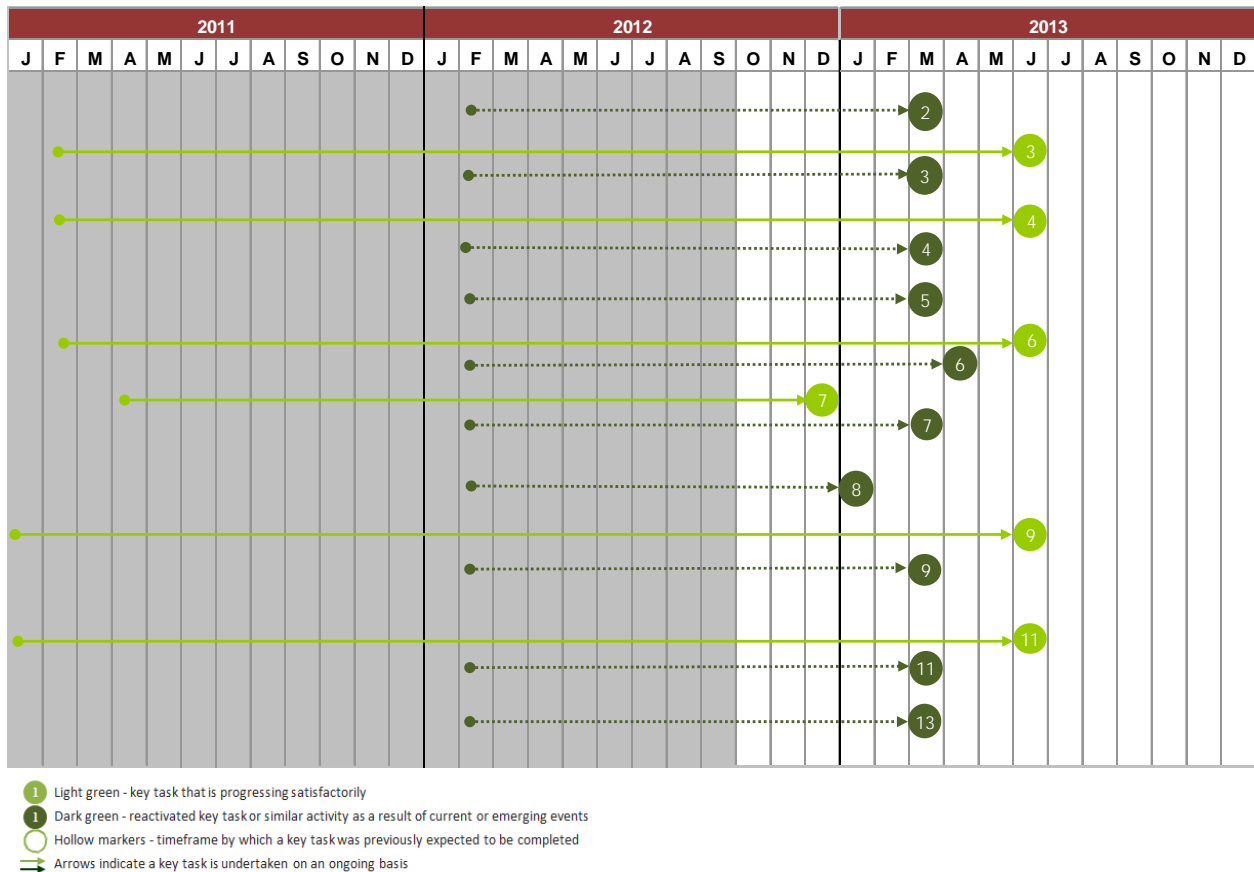
(Article courtesy DCCSDS - September 2012)

Human and Social - progress of remaining key tasks against Implementation Plan

The progression of key tasks against the Implementation Plan for the Human and Social Line of Reconstruction was updated during the annual review process for Operation Queensland Update 2011-2013. Key tasks that have been reactivated in response to the current and emerging natural disaster events of 27 January - February 2012 are indicated with dark green markers.

2010/2011 events managed by the Authority - At 28 September 2012, seven key tasks are complete with the six remaining key tasks on track to be completed within the proposed timeframes.

2011/2012 events managed by the Authority - At 28 September 2012, three key tasks are complete and ten of the remaining reactivated activities are on track to be completed within proposed timeframes.



2010/2011 events managed by the Authority

Remaining key tasks:	
3	Provide public information and advice on community and public health issues
4	Contribute to a reconstruction communication strategy to manage community expectation and inform communities
6	Provide community development support, including community engagement and capacity building activities
7	Support the development and implementation of both cross-cutting planning and local community, economic and environmental recovery and reconstruction plans
9	Connect displaced householders to housing assistance and support mechanisms
11	Provide additional services including counselling, personal support and specialised mental health services

2011/2012 events managed by the Authority (shown in dark green)

Remaining reactivated key tasks	
2	Activate and process emergency assistance payments, Natural Disaster Relief and Recovery Arrangements (NDRRA) grants and other relevant sources of relief
3	Provide public information and advice on community and public health issues
4	Contribute to a reconstruction communication strategy to manage community expectation and inform communities
5	In conjunction with Queensland Treasury, seek federal and state funding for additional costs associated with disaster related service delivery
6	Provide community development support, including community engagement and capacity building activities
7	Support the development and implementation of both cross-cutting planning and local community, economic and environmental recovery and reconstruction plans
8	Transition local health, social, education and community services to normal
9	Connect displaced householders to housing assistance and support mechanisms
11	Provide additional services including counselling, personal support and specialised mental health services
13	Develop subordinate implementation plans to achieve key tasks at project level

4.2 Economic

The economic line of reconstruction focuses on returning businesses back to operation and growing these businesses and improving economic conditions overall across the State.

Economic		2010/2011 Events	2011/2012 Events		
NDRRA Small business grants & loans <i>(Source: QRAA - 27 September 2012)</i>	Amount paid	\$86.23M	\$1.10M		
	Claims granted	5,682	104		
NDRRA Primary producers grants & loans <i>(Source: QRAA - 27 September 2012)</i>	Amount paid	\$228.58M	\$9.31M		
	Claims granted	10,102	717		
Coal exports <i>(Source: DSDIP - 26 September 2012)</i>	Aug-11	14.25 Mt			
	Aug-12	13.2 Mt			
	Total for 2010-11	162.6Mt			
	Total for 2011-12	164.9 Mt			
	Forecast Total for 2012-13	169Mt			
Primary Industry Estimate of Gross Value of Production (GVP) <i>(Source: DSDIP - Prospects update March 2012)</i>	Annual forecasts at	2009/10	2010/11	Sep-11	Mar-12
	Grain sorghum	\$155M	\$320M	\$313M	\$291M
	Cotton (raw)	\$355M	\$660M	\$872M	\$930M
	Fruit & vegetable	\$2,208M	\$2,146M	\$2,365M	\$2,362M
	Sugarcane	\$1,425M	\$940M	\$1,218M	\$1,150M
Employment - Full-time labour force <i>(Source: ABS - 26 September 2012)</i>	Aug-11 ('000)	2,342			
	Aug-12 ('000)	2,337			

GVP is an estimate of production based on data forecasts received from industry representatives, statistical information, weather forecasts and market conditions including price. Initial forecasts for the current financial year are published in September. These forecasts are then reviewed during the year and adjusted in March.

The current state of activity:

Natural Disaster Relief and Recovery Arrangements (NDRRA) Category C assistance for those affected by the 2011 floods, Cyclone Yasi and the 2012 flooding in South West Queensland, was extended to 31 October 2012 due to wet conditions over 2011-12 further delaying work. NDRAA Category B and D assistance programs ended on 30 June 2012.

At 27 September 2012, the NDRRA program (jointly funded by the Commonwealth and State governments) had approved assistance to 16,660 small businesses and primary producers, to a maximum value of \$333.25 million.

Western Queensland Tropical Low, 27 Jan-Feb 2012:

NDRRA Category B and Category C assistance has been activated in Balonne, Barcaldine, Blackall-Tambo, Maranoa, Murweh, Paroo and Quilpie (specified area) Shires.

At 27 September 2012, Category B Loans approved:

- \$0.25 million to 1 small business
- \$0.34 million to 3 primary producers.

At 27 September 2012, Category C recovery grants approved:

- \$9.33 million to 722 primary producers
- \$1.13 million to 105 small business
- \$0.35 million to 33 not for profit organisations.

Employment - Queensland's trend employment increased by about 500 persons over August, following nine months of contraction. However, trend employment in Queensland declined 5,200 persons (0.2%) over the year to August 2012. Employment growth in Australia was 1,200 persons for the month in trend terms. (ABS, cat no. 6202).

With global economic conditions continuing to weigh on business sentiment, any employment growth in Queensland will likely be subdued over the near-term, as also suggested by continued weakness in forward indicators, such as ANZ Job Advertisements for both the state and the nation.

4.2 Economic (Continued)

Statewide Status

Mining: In 2011-12, Queensland coal exports totalled 164.88Mt - 1.4% higher than that achieved in 2010-11.

In 2012-13, year-to-date coal exports (to 31 August 2012) total 25.8Mt - a 3.6% decrease on the same period in 2011.

Exports for the month of August 2012 total 13.2Mt, a 7.4% decrease on August 2011.

During 2012-13, coal demand has continued to weaken as world economic growth continues to slow; more European countries move into recession; and as steelmakers in Europe and China cut back their production.

The Queensland coal ship queue (a broad indicator of future demand), currently stands at 18 ships, the lowest queue in two years.

In the Queensland State Budget 2012-13, coal royalties will be increased from 10% to 12.5% for coal valued at more than A\$100/t, and to 15% for coal valued at more than A\$150/t. The royalty on coal valued at less than A\$100/t remains unchanged at 7.5%.

The Department of Transport and Main Roads' forecast for 2012-13 Queensland coal exports is 169Mt, a 2.5% increase on 2011-12. The Indicative value of Queensland coal exports for 2012-13 is estimated at A\$26.8 billion, a decrease of 21.5% on 2011-12.

(Source: DSDIP 26 September 2012)

Agriculture: Next update will be provided after the release of the main edition of 'Prospects'.

Tourism: International visitor numbers to Queensland fell 2% in the year to June 2012, to 1.9 million. These visitors spent 41.2 million nights in Queensland (up 2% from June 2011), or an average of 21 nights per visitor. The most dramatic decline in international visitation to Queensland was the UK and Japanese markets (both down 13%), however visitation from China increased 21% in the year to June 2012 offsetting the declines from the European and US markets. International expenditure in Queensland was also up 3%, to a total of \$3.8 billion in the year to March 2012.

Total domestic overnight visitor numbers to Queensland increased 10% in the year to June 2012, to 18 million visitors. These visitors stayed a total of 76.8 million nights, up 10%. Average length of stay was 4.1 nights. Overnight domestic expenditure also increased by 19% to \$13.9 billion in the year to June 2012. Queensland also received 37.3 million domestic day visitors (up 7%), who spent \$4.1 billion in the year to June 2012.

(Source: DSDIP 26 September 2012)

Economic - progress of remaining key tasks against Implementation Plan

The progression of key tasks against the Implementation Plan for the Economic Line of Reconstruction was updated during the annual review process for Operation Queensland Update 2011-2013. Key tasks that have been reactivated in response to the natural disaster events of 27 January-February 2012 are indicated with dark green markers.

2010/2011 events managed by the Authority - At 27 September 2012, 20 key tasks are complete with the remaining 2 key tasks still on track for completion by the estimated timeframes.

2011/2012 events managed by the Authority - At 27 September 2012, all reactivated key tasks are now complete, with key tasks 10 and 15 which were due for completion in October being completed ahead of time. Regional staff have worked with industry bodies, chambers of commerce etc to support economic recovery activities through strong networks and referrals. Ongoing work continues as part of the Department's core business.



- 1 Light green - key task that is progressing satisfactorily
- 1 Dark green - reactivated key task or similar activity as a result of current or emerging events
- 1 Hollow markers - timeframe by which a key task was previously expected to be completed
- Arrows indicate a key task is undertaken on an ongoing basis

2010/2011 events managed by the Authority

2011/2012 events managed by the Authority (shown in dark green)

Remaining key tasks:		Remaining reactivated key tasks	
1	Rapid restoration of a competitive and sustainable Queensland economy		Nil
10	Advise on Natural Disaster Relief and Recovery Arrangements (NDRRA) measures		

4.3 Environment

The Environment Line of Reconstruction is focused on recovering and conserving natural resources and related infrastructure affected by the Queensland flood and cyclone disasters and making sure that these efforts do not adversely impact the State's natural resources.

Environment		2010/2011 Events	2011/2012 Events	Current Status ¹
National parks <i>(Source: EHP 13 August 2012)</i>	Affected	162	22	184
	Partially/fully open	162	22	184
	Remain Closed	0	0	0
Sewerage and water schemes <i>(Source: EHP 21 June 2012)</i>	Affected	188	3	191
	Operating (needing permanent repairs)	15	0	15
Streamflow gauges <i>TASK COMPLETED - March 2012</i>	Affected	40	4	44
	Repaired and operational	39*	4	43

¹ The status indicates current total impact on reported metrics for both disaster event periods.

5 parks have partially opened and 10 have been reopened fully.

* Two sites were amalgamated and replaced by a single site. All gauging stations are operational.

As the Environmental Line of Reconstruction is now reporting quarterly, the next update is due in December 2012.

The current state of activity at the previous reporting period:

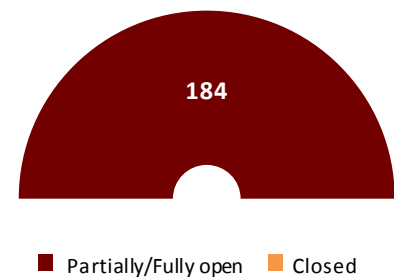
- National Parks – At 13 August 2012, all National Parks impacted by the 2010/11 events were open. All National Parks impacted by the 2012 flood events were also open. **See Figure 4.3.**

Restoration of national parks damaged as a result of the 2010-11 events was 56% complete. **Figure 4.4** represents progress against the work plan.

- Sewerage and Water Infrastructure – All water supply and sewerage schemes damaged by either 2010-11 or 2011 - 12 events were operational. Seven water supply schemes and eight impacted sewerage treatment schemes were operational but required permanent repairs. One sewerage treatment scheme was permanently repaired.
- 28 of the 105 established cassowary feeding stations were in use and 171 tonnes of fruit had been delivered to the feeding stations.

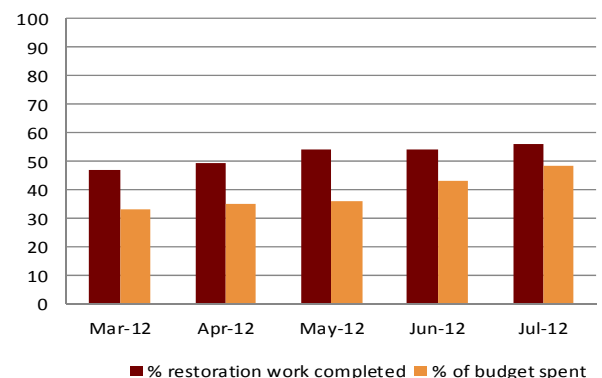
All work related to non-mining industry related Transitional Environmental Programs (TEPs) issued as a result of the 2010-11 disasters is now finalised. Following a review of development application conditions, standards and guidelines, new revised/updated guidelines were developed relating to the regulation of sewage pump stations and incident/overflow notification.

Figure 4.3 Affected national parks (2010/2011 & 2011/2012 events combined)



(Source: EHP - 13 August 2012)

Figure 4.4 Progress against work plan for National Parks restoration - 2010-11 events (Total for State)



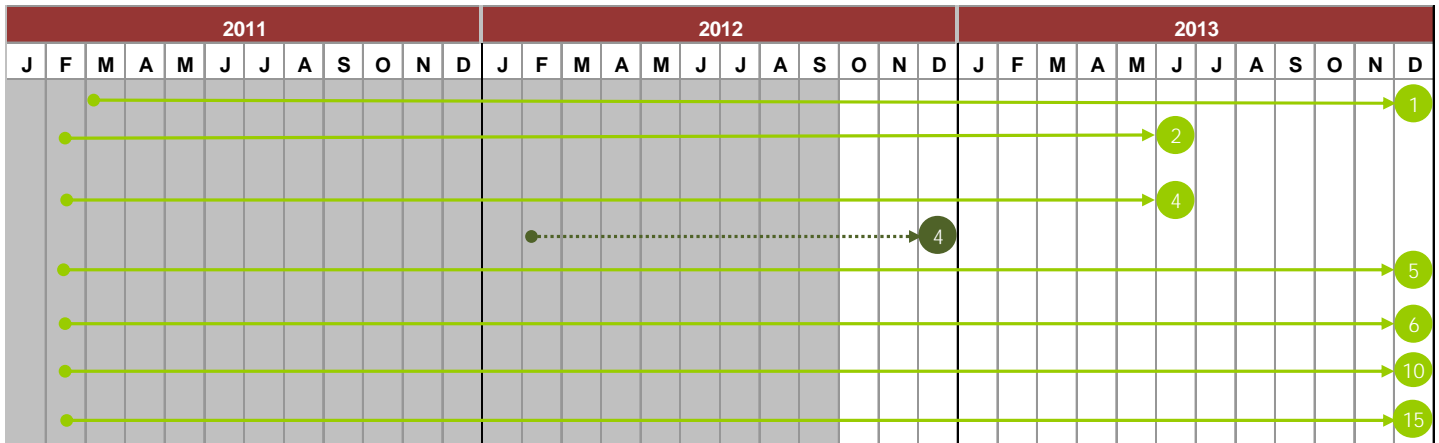
(Source: EHP - 13 August 2012)

Environment - progress of remaining key tasks against Implementation Plan

The progression of key tasks against the Implementation Plan for the Environment Line of Reconstruction was updated during the annual review process for Operation Queensland Update 2011-2013. Key tasks that have been reactivated in response to the current and emerging natural disaster events of 27 January-February 2012 are indicated with dark green markers.

2010/2011 events managed by the Authority - At 31 August 2012, 10 key tasks were complete and seven remained on track to be completed within the proposed timeframes.

2011/2012 events managed by the Authority - At 31 August 2012, three reactivated key tasks were complete and only key task 4 remained due for completion in December 2012. Impact assessments had been extended due to previous wet weather restricting access to the parks.



- 1 Light green - key task that is progressing satisfactorily
- 1 Dark green - reactivated key task or similar activity as a result of current or emerging events
- Hollow markers - timeframe by which a key task was previously expected to be completed
- Arrows indicate a key task is undertaken on an ongoing basis

2010/2011 events managed by the Authority

2011/2012 events managed by the Authority (shown in dark green)

Remaining key tasks:		Remaining reactivated key tasks	
1	Coordinate and prioritise rehabilitation of the natural environment and community assets including reserves, parks, waterways and wildlife	4	Restore damaged infrastructure on State protected areas
2	Implement through planning, monitoring, assessment and advice, strategies to reduce future impacts on the natural environment in both urban and rural landscapes, focusing on long-term resilience and sustainability		
4	Restore damaged infrastructure on State protected areas		
5	Conduct ecological assessment and restoration of protected areas, ecosystems and species		
6	Assess and reconstruct soil health and biodiversity in upland areas and flood plains		
10	Assess event impacts on the natural environment and natural resources		
15	Support the expeditious repair of water and sewerage infrastructure		

4.4 Building Recovery

The building line of reconstruction is aimed at coordinating the planning and implementation of the statewide rebuilding program. Its particular focus is on housing and maximising the efficiency of resource allocation.

This is the final report submitted by the Department of Housing and Public Works for the Building Recovery line of reconstruction as all key tasks for both the 2010-11 and 2011-12 events have now been completed. Future updates, however, will continue to be reported in relation to the Cyclone Shelter program.

Building recovery		2010/2011 Events	2011/2012 Events	Current Status ¹
Power to homes and businesses <i>(Source: DPW 21 March 2012 and Ergon Energy 3 October 2012)</i>	Affected	480,000	9,000	489,000
	Restored	479,870	9,000	488,870
Insurance* <i>(Source: ICA 28 March 2012)</i>	Claims	131,935	6,408	138,343
	Estimated reserve value	\$3,780M	\$124.7M	\$3,904M
	Paid	\$2,810M	-	\$2,810M
Government owned buildings <i>(Source: DHPW 30 September 2012)</i>	Assets affected	4,381	135	4,516
	Assets repaired	4,379 ²	135	4,514
Significantly affected residential housing <i>(Source: ICA 28 March 2012 and DCCSDS 9 October 2012)</i>	Category A - Non-liveable residential properties	3,636	-	3,636
	Category B - Residential properties vacated for repair	2,040	-	2,040
	Structural assistance grants	1,046	46 [#]	1,092

¹ The status indicates the current total impact on reported metrics for both disaster event periods.

² The two remaining assets relate to Queensland Health school dental health facilities, for which the tender procurement process is expected to commence by early October 2012 and completion of works anticipated by late January 2013

* There has been no insurance update from the Insurance Council of Australia since March 2012.

An additional 15 applications have been received and are being considered.

The current state of activity:

- Power to homes and business - The number of properties still without power from the 2010-11 events is 130 at 3 October 2012.
- Buildings - Of the 135 other government-owned buildings impacted by the 2012 events, all 135 have been repaired at 31 August 2012.
- At 28 March 2012, there have been 6,408 insurance claims with an estimated reserve value of \$124.7 million as a result of the South West Queensland border floods.
- 2010-2011 events - At 9 October 2012, a total of 1,046 structural assistance grant claims with a value of \$8.6 million had been received.
- 2011-2012 events - At 9 October 2012, 46 structural assistance grant claims had been paid with a value of \$449,736. An additional 15 applications are currently being considered.
- The Building Services Authority (BSA) continues to provide advice as necessary.

Cyclone Shelter Project

In May 2011, a \$60 million fund was announced to construct 10 cyclone shelters and multi-purpose facilities in North Queensland (see map on next page). The shelters are being funded by a gift of \$30 million from the Emirate of Abu Dhabi and a further \$30 million contribution by the Queensland Government. The new cyclone shelters will be active civic assets with multi-functional uses and capable of housing up to 800 people at a time in the event of a cyclone. The new cyclone shelter in Cairns, incorporates a double basketball court in the facility, and will be able to accommodate approximately 1500 persons.

The Department of Housing and Public Works (DH&PW) is facilitating the design, delivery and project management of the program over the two financial years of 2011-12 and 2012- 13.

The Authority is responsible for distributing and acquitting the funds against agreed milestones under the program and managing the ongoing liaison with the Emirate of Abu Dhabi.

The target completion date for the Cyclone Shelter projects was originally planned for November 2012, weather permitting, in time for the commencement of the cyclone season.

The extended wet weather conditions and unforeseen latent conditions on some sites have resulted in delays to several projects being managed by DH&PW, in particular Proserpine, Port Douglas, Tully, Townsville, Ingham and Weipa.

The Cairns Regional Council (CRC) is managing the delivery of the Edmonton Leisure Centre Cyclone Shelter. The contract was awarded on 31 May 2012, being the first Council meeting post the election, and is anticipated to be completed in March 2013.

DH&PW has developed a communications strategy to inform affected communities and Local Disaster Management Groups of potential delays in completion of the shelters.

See Table 4.4.1 for the status of cyclone shelter progress.



Above: Updated progress of Cyclone Shelter - Bowen SHS - nearing completion in mid October

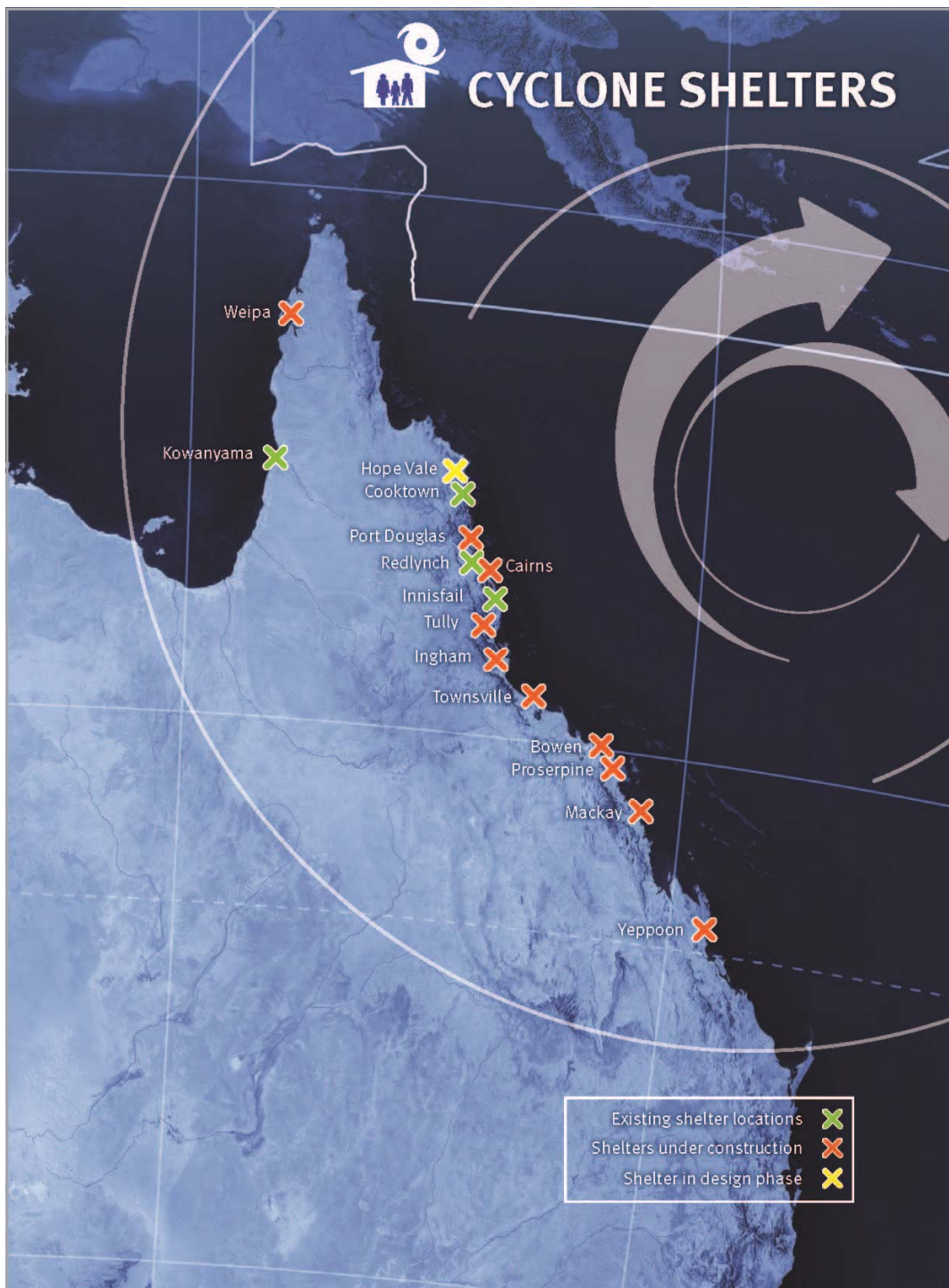
Table 4.4.1 Cyclone Shelter Progress Status

Cyclone shelter location	Delivery agency	Forecast Completion Date	% Complete
Bowen SHS	DH&PW	mid October	96%
Townsville, Heatley Secondary College	DH&PW	early December	65%
Ingham SHS	DH&PW	mid December	52%
Port Douglas SS	DH&PW	early December	65%
Proserpine SHS	DH&PW	early December	62%
Tully SS	DH&PW	early December	65%
Weipa	DH&PW	late December	45%
Yeppoon SHS	DH&PW	mid October	87%
Mackay, new SHS	DET&E	late December	25%
Cairns, Edmonton Leisure Centre	Cairns Regional Council	March 2013	16%

(Source: DHPW 30 September 2012)



Above: Updated progress of Cyclone Shelter - Yeppoon State High School - also due for completion mid October.



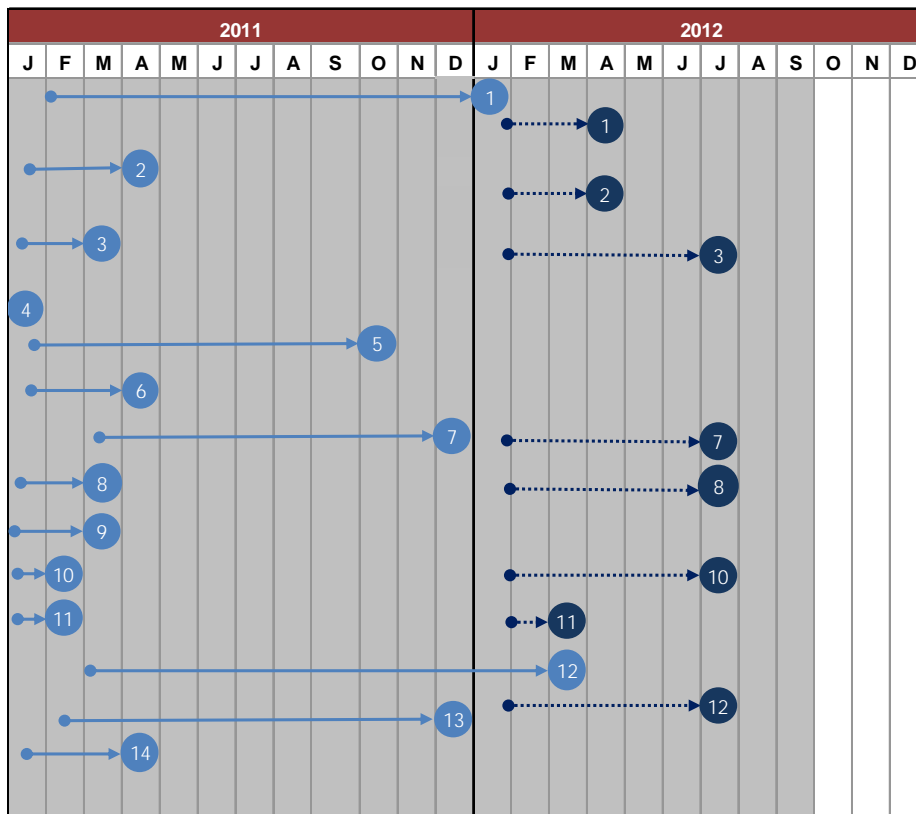
(Map courtesy Department of Housing and Public Works)

Building Recovery - progress against Implementation Plan

The progression of key tasks against the Implementation Plan for the Building Recovery Line of Reconstruction was updated during the annual review process for Operation Queensland Update 2011-2013. All key tasks are confirmed as complete and are now being monitored in line with normal business functions.

2010/2011 events managed by the Authority - All key tasks are complete.

2011/2012 events managed by the Authority - All reactivated key tasks are complete.



- Light blue markers indicate a key task that has been completed on or before planned schedule
- Dark blue markers indicate a reactivated key task that has been completed on or before planned schedule
- Arrows indicate a key task is undertaken on an ongoing basis

2010/2011 events managed by the Authority

2011/2012 events managed by the Authority (shown in dark blue)

Key tasks	Reactivated key tasks
1 Develop and implement solutions for temporary and long-term accommodation	1 Develop and implement solutions for temporary and long-term accommodation
2 Conduct assessment of damage to building stock, particularly housing	2 Conduct assessment of damage to building stock, particularly housing
3 Repair government building assets to allow functional operations	3 Repair government building assets to allow functional operations
4 Facilitate the repair of identified iconic buildings	
5 Determine repair/rebuild approach for community assets	7 Support, monitor and advise on reconstruction supply chain activities
6 Coordinate and prioritise medium to long-term demolition, repair and rebuilding	8 Support the Department of Communities Structural Assistance Grant assessments and develop contractor engagement strategy
7 Support, monitor and advise on reconstruction supply chain activities	10 Facilitate community access to independent building repair advice
8 Support the Department of Communities Structural Assistance Grant assessments and develop contractor engagement strategy	11 Identify and recommend action, where necessary, to address any regulatory impediments to successful building recovery
9 Support the Appeal Fund process and contractor engagement strategies	12 Monitor and report on the progress of Building Recovery program
10 Facilitate community access to independent building repair advice	
11 Identify and recommend action, where necessary, to address any regulatory impediments to successful building recovery	
12 Monitor and report on the progress of Building Recovery program	
13 Support the development and implementation of both cross-cutting planning and local community, economic recovery and reconstruction plans	
14 Develop subordinate implementation plans to achieve key tasks at project level	

4.5 Roads and Transport

The roads and transport line of reconstruction is aimed at reconnecting people and enabling the re-supply of communities across the State.

Roads and transport		2010/2011 Events	2011/2012 Events
State road network (kms) <i>(Source: DTMR 31 Aug 2012)</i>	Affected	20,610	10,890
	Reopened	19,922 [#]	9,737 [^]
State rail network (kms) <i>(Source: DTMR 29 Aug 2012)</i>	Affected	4,748	4,180
	Recovered	4,596	4,180
Ports <i>(Source: DTMR 8 December 2011)</i>	Affected	11	*
	Recovered	11	*

[#] Roads declared closed during the natural disasters of the summer of 2010/11, km closed refers to roads clearly signed as 'closed', restricted to '4WD/high clearance vehicles' (4WD vehicles high ground to chassis clearance), 'excess mass/dimension/80% of legislative axle group (road closed to vehicles of excess mass or over dimension /80% of the mass permitted for the axle type)', 'load restriction', 'closed to all vehicles/closed to km shown are unique km closed' (eg. the unique km closed of state-controlled roads during (declared) natural disasters during the 2010-11 summer was 20,610 km.) Source: EMQ declarations and 131940

[^] Note – the formal recovery or emergent works period expired on 31 July 2012 for events in the 2011/12 year. Recovery reporting will commence for the 2012/13 year as required when new natural disasters are declared which affect the state's transport network.

The official recovery/emergent works phase for the 2011/12 summer has ended. Future recovery reporting will occur following any newly activated natural disaster and activation of Restoration of Essential Public Assets (REPA) under NDRRA.

At 27 September 2012, only 5kms of state-controlled roads were closed or with limited access as per the map (page 27) showing the Operational Status of the Road Network. The current dry period is providing all TNRP delivery agents with an excellent opportunity to deliver reconstruction works with minimal impact by wet weather.

The current state of activity:

- Roads – TMR had its highest expenditure since the reconstruction program commenced with a \$190.9 million spend during August 2012. The cumulative spend by the TNRP to 31 August 2012 was \$2.183 billion consisting of \$450 million on recovery works and \$1.733 billion on reconstruction works.
- Rail - All Queensland rail lines that closed due to weather events in the 2011/12 summer have been recovered and services have resumed.
- Maritime - 99% or 69 of the 70 aids to navigation damaged as a result of natural disasters in 2010 and 2011 are now reconstructed.

Key achievements:

- 27 contracts with a total value of \$142 million were awarded in August 2012, including a \$25 million package for overlay stabilisation works in the North Burnett. Since the commencement of the Transport Network Reconstruction Program, 431 contracts worth over \$3.681 billion have been awarded.
- Construction commenced on 36 road reconstruction projects in August 2012 including ten projects valued at \$40 million in the Far North Region, four projects in the Mackay/Whitsunday Region including two projects on the Bruce Highway, and in the South West Region two projects on the Warrego Highway valued at \$20.5 million and the Carnarvon Highway valued at \$8.9 million.

4.5 Roads and Transport (Continued)

Key achievements (continued):

- TMR's South West Region has the greatest value of reconstruction works to complete following natural disasters in 2010, 2011 and 2012. Despite the disasters and associated flooding this region is generating momentum with the program of works. Good progress was made during August 2012 with expenditure of \$22.6 million against a target of \$18.9 million. Dry weather over the past few months has provided reconstruction crews with ideal opportunities to maximize delivery of reconstruction works across the south west.



Above: Landsborough Highway near Morven – during construction



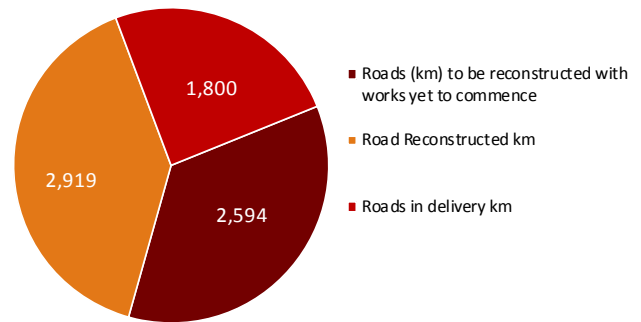
Above: Warrego Highway at Blyth Creek after reconstruction works, August 2012

- Due to extensive flooding which again occurred across the state in 2011/12, a review of the network damage has been undertaken and an estimate of the reconstruction costs completed. Additional funding of \$1,127 million to reconstruct transport assets damaged during the 2011/12 disasters is now approved and submissions are being finalised.

Reconstruction of damage in 2010-2011

- TMR plans to reconstruct 7,313 kms of roads damaged as a result of Cyclone Yasi and floods in 2010-2011. By 31 August 2012, over 2,919 kms of these roads had been reconstructed with 1,800 kms currently in delivery. **See Figure 4.5.1**

Fig. 4.5.1 Roads Damaged Reconstructed Yasi/Floods 2010/11



(Source: DTMR 31 August 2012)

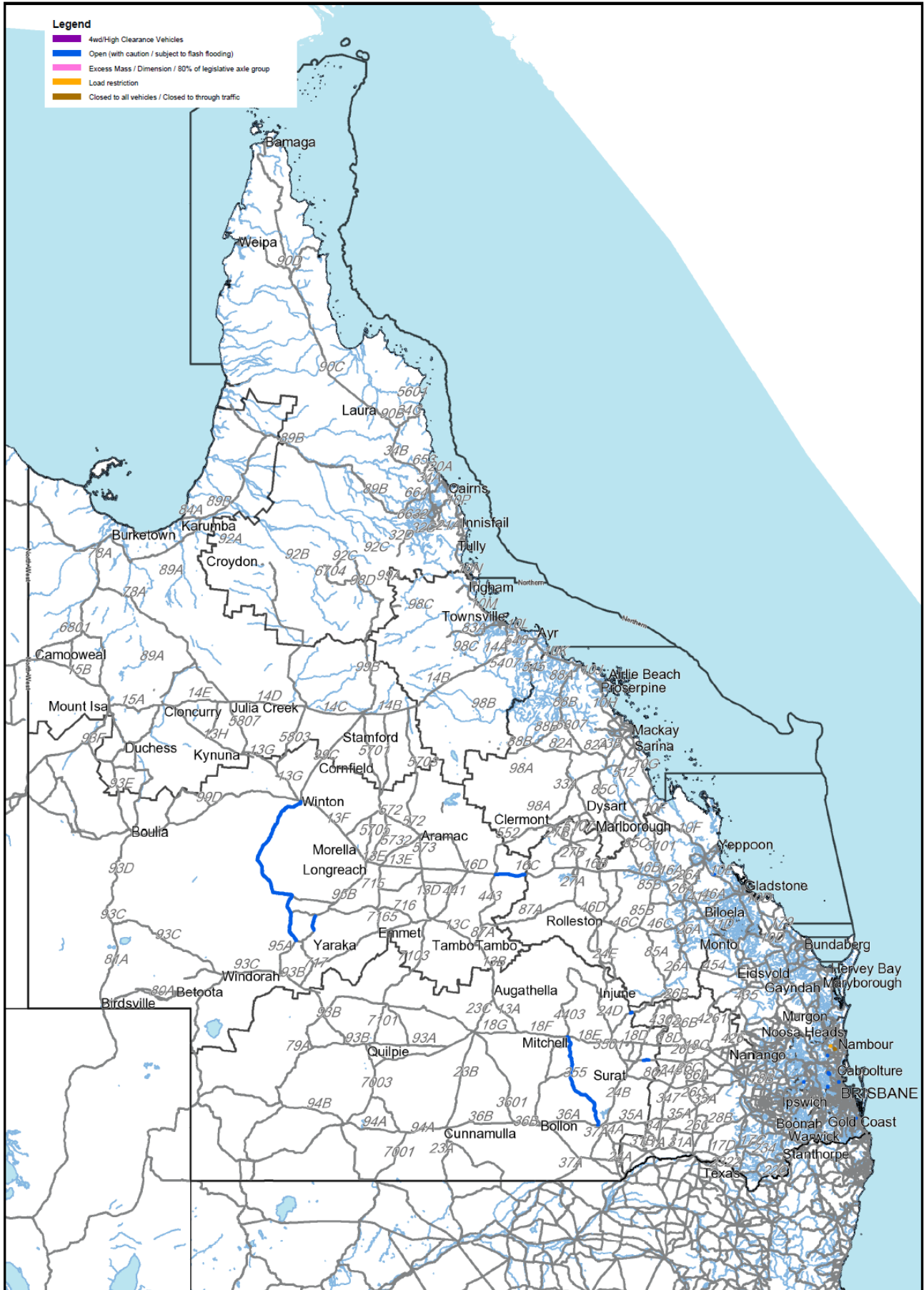
The status of road recovery and reconstruction packages at 14 September 2012 is:

- \$918 million of packages are completed for both recovery and reconstruction works as follows:
 - \$440.3 million of packages are completed for recovery works;
 - \$477.9 million of packages are completed for reconstruction works;
- \$2,762 million of reconstruction works are currently underway;
- \$301 million in reconstruction works tenders are currently being assessed for approval;
- \$86 million of reconstruction works packages are out to tender; and
- \$303 million of reconstruction works contracts are being prepared to go to market in the next month.

Note: these values include costs to reconstruct works from damage caused by events in 2010 and 2011.

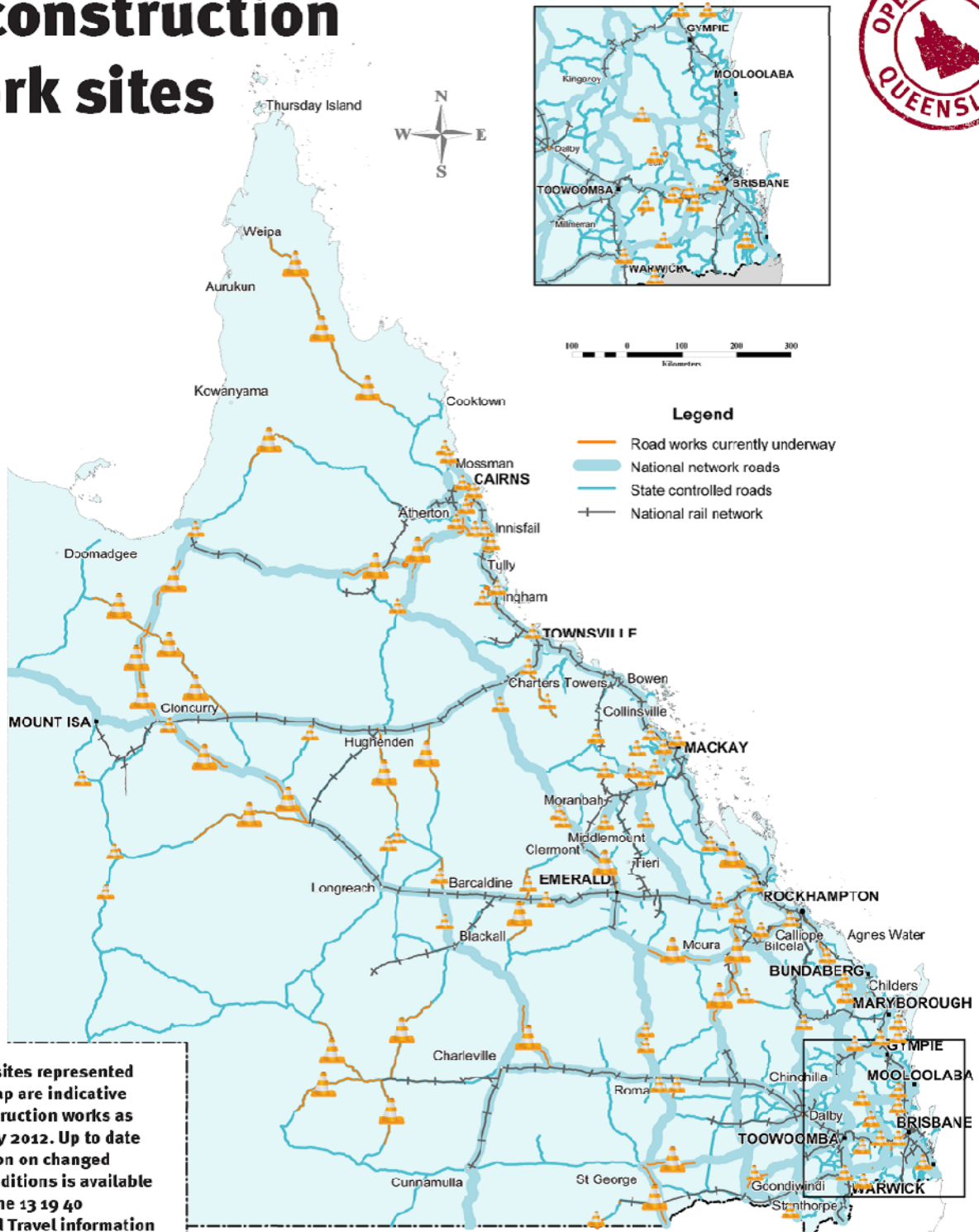
- For 2010-11 events, 811 reconstruction contracts have been awarded and construction completed for 395 contracts.

(Source: DTMR 31 August 2012)



The State of Queensland (including the Department of Transport and Main Roads) does not make any statement, representation, or warranty about the accuracy, currency, reliability, suitability for any purpose, or completeness of the information contained in this document/map. To the maximum extent possible, the State of Queensland disclaims all responsibility and all liability (including without limitation, liability in negligence) for all expenses, losses, damages and costs which you or anyone else might incur as a result of using this document/map or as a result of it being inaccurate or incomplete in any way and for any reason.

Transport and Main Roads reconstruction work sites



The worksites represented on this map are indicative of reconstruction works as at late July 2012. Up to date information on changed traffic conditions is available through the 13 19 40 Traffic and Travel information website.

Updated August 2012

Roads and Transport Line of Reconstruction Case example, Mackay and Whitsunday coastal waters **Maritime Safety Queensland – Mackay Maritime Region Beacon Reconstruction**

Significant damage occurred to navigational aids in the Mackay Region as a result of the destructive weather created by Tropical Cyclone “Ului” which crossed the Queensland coast in March 2010. Damage occurred to more than fifty beacons in the Mackay Region.

The damaged beacons required full reconstruction as they are important navigational aids for local recreational and small commercial vessels using the waterways in this popular part of the Queensland coast.

Extensive work was undertaken by TMR to compile data on the individual beacon sites in order to determine the full scope of works required to ensure the necessary navigational standards were in place.

Early consideration was given to a complete redesign and upgrade to the structures to withstand future cyclones. TMR marine engineers advised the existing beacon design were suitable only for sheltered waters.

Although the beacons had been used in more exposed waters in some regions in the past, new engineering 'safety in design' requirements meant that it was no longer appropriate to reinstate a beacon in an area that was known to exceed its engineering design.



Photos: Typical examples of beacons damaged or destroyed in waters around Mackay and the Whitsundays in 2010.



Above: New beacon design in place for Seaforth Creek No 2 Beacon

Redesign work resulted in a new 355mm diameter pile design, upgraded from 150mm pile diameter.

The new design meets current engineering standards and will cope with the local weather conditions, provide a safer structure to ensure workplace health and safety and meets operational requirements.

Most beacons are now reconstructed with final works to be completed.

(Article courtesy DTMR 28 September 2012)

Roads and Transport Line of Reconstruction Case example - South Coast region Cunninghams Gap Reconstruction

The Cunningham Highway is part of the federally funded national network providing a crucial east-west connection between Ipswich and Warwick for industry, tourism, businesses and the community.

Urgent safety works commenced in November 2010 to manage the risk of major rock falls at Cunninghams Gap as a result of two metres of rain between December 2010 and early March 2011. Cunninghams Gap sustained an enormous amount of damage and work to repair the damage was essential to the safety of Cunningham Highway road users.

Major reconstruction work at Cunninghams Gap has now been completed at ten of the 11 reconstruction sites.



Above: damage to Cunningham Highway, Cunninghams Gap

The work at Clayton's Gully to construct a new stretch of road 600 metres long was required due to the embankment settling 2-4 metres across the road after the 2 metres of rainfall over the 2010-2011 summer. The geology of the area required a realignment of the road corridor along this section of the highway. Work on the realignment is progressing with almost 130,000m³ of material removed from the site, ahead of pavement laying, road surfacing, line marking and the installation of signage.

Due to wet weather in the first half of 2012, the estimated completion date is now November 2012. Once reconstruction is complete, the road will be safe, efficient and more reliable in future extreme weather events. The reconstruction will ensure safe access is maintained for the many road users who rely on this link each day.

As Clayton's Gully is a new section of road, there will be minimal disruption to traffic while construction is underway. Traffic controllers are on site to assist construction vehicles in and out of the site and the speed limit has been reduced to 40km/h.

This project is being delivered under the Natural Disaster Relief and Recovery Arrangements (NDRRA), a joint federal and state initiative. Under these arrangements, the Australian Government provides 75 per cent of the funding, with 25 per cent from the Queensland Government.

CUNNINGHAM'S GAP RECONSTRUCTION

New road no 'clayton's' project

*Fassifern Guardian, Boonah
29 August 2012*

Normally, Clayton's Gully carries little more than a flow of mountain seepage from Mt Mitchell. It runs under the Cunningham's Highway and down to Tarome where it meets Warrent Creek. It was a recognised weak point in the highway near the heights of Cunninghams Gap as flood rains could turn the trickle into a gully.

The road surface at Clayton's Gully had been monitored by the Department of Main Roads with a high-tech measuring device for several years, but only minor movement was detected until the first week of December, 2010. That's when the first major slip occurred taking with it almost three of the four lanes of the highway. Traffic was slowed to stop-go conditions on the remaining intact inside lane while Main Roads and contractors, Fulton Hogan, worked to restore the damaged section before the Christmas rush of traffic. The highway was re-opened just before Christmas Day. But continuing flood rains weakened another slipage point below the original fault line and by late December parts of the outer lanes had dropped by about a metre and a half down the mountainside. Over 6,000 cubic metres of material was brought in to buttress the highway but the 'fix' was only temporary.

After exhaustive investigations were carried out, the decision was made to realign the highway to a point further up the slope which offered a more stable foundation. But the work was put on hold as the ten other 'crisis points' on the upper reaches of the highway were reconstructed.

More than twelve months after the second slip, work began on the realignment in February, this year. This marked the start of the final stage of the \$40 million reconstruction of the 11 flood damaged sites along the Cunningham's Gap section of the highway.

They WENDY CREIGHTON photo DREW CREIGHTON RECONSTRUCTING four lanes of highway over Clayton's Gully along its historic alignment was judged to be impractical.

"All the options we assessed had geotechnical issues," explained Fulton Hogan Project Manager Alan Black.

Clayton's Gully, one of the eleven major flood affected sites along the Cunningham's Gap project, was judged as having sustained the worst of the devastation caused by the flood rains in December 2010 and January 2011.

A significant assessment considering the extent of the damage which began east of the looped corner and ran through to the highest point of the highway through the Gap.

In February this year, reconstruction works were completed on the ten other hazard points. All that was left to sign off on the \$40 million project was the project on the corner at Clayton's Gully.

Department of Transport and Main Roads Program Delivery Manager, Alan Stone, says when it came to Clayton's Gully the only option to ensure the highway was "future-proofed" was to cut further back into the mountain.

"We are now well into the construction of a completely new alignment," he said. "We have gone in behind the original steep road embankment to form up a 400 metre stretch of four lane highway on an alignment that offers a solid foundation away from the slippage sites."

Simple words which understate the scope of a major engineering project.

To construct the road along the new alignment first called for an Act of Parliament.

"We were forced to cut into World Heritage Listed National Park and that can't be done without Parliament approving to the process," Mr Stone added.

Environmental, engineering and geological impact assessments had to be completed before the work could be given the go ahead.

"Concurrent with the road construction, we had to redesign the bed of the gully to reduce the impact of high volume water flows," he said.



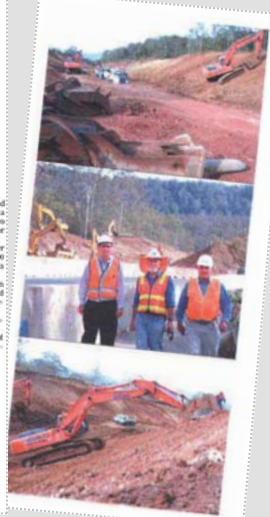
In number terms, 300,000 tonnes of earth and rock had to be trucked down the mountain to a site below the looped corner. That equated to two hundred truck movements each working day for many weeks as the material was relocated.

"By the time the work is finished and weather permitting that will be in October this year, 13,000 man hours will have been spent on the Clayton's Gully project," Mr Stone said.

By then all the earth and rock will have been dug out, a gravel rock layer will have been placed on top to a depth of 30cm and overlaid by pavement to a depth of 30cm.

"And while ensuring that traffic continues to flow over the Gap," he added.

"That when it is finished it will signal the end of nearly two years of hard work and a raft of innovative engineering projects."

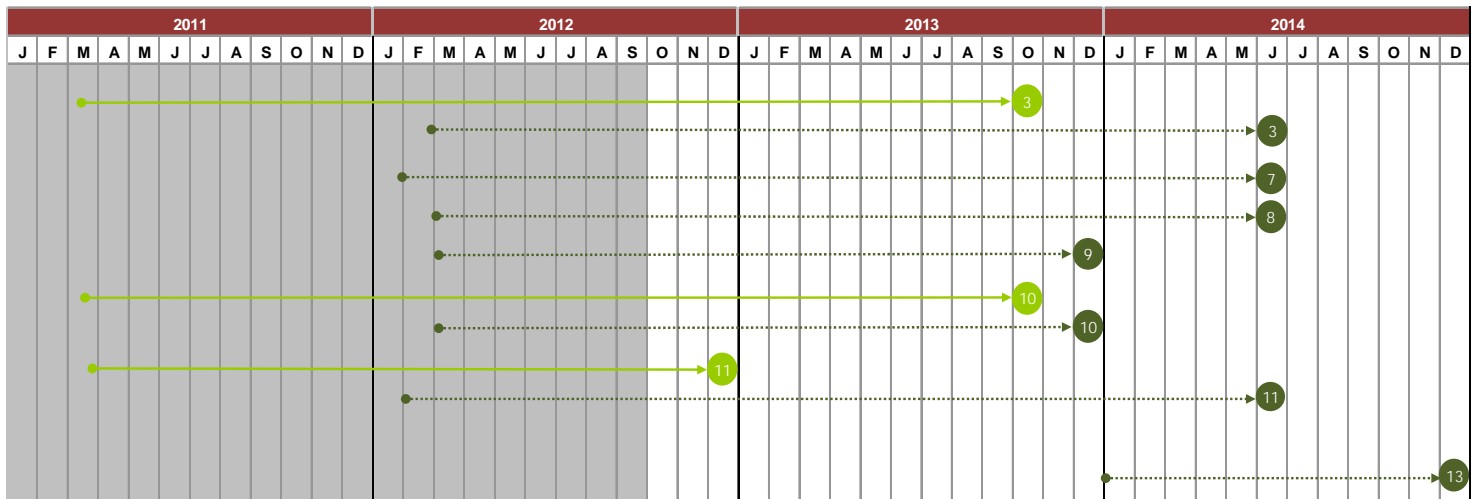
(Article courtesy DTMR 28 September 2012)

Roads and Transport - progress of remaining key tasks against Implementation Plan

The progression of key tasks against the Implementation Plan for the Roads and Transport Line of Reconstruction was updated during the annual review process for Operation Queensland Update 2011-2013. Key tasks that have been reactivated in response to the current and emerging natural disaster events of 27 January-February 2012 are indicated with dark green markers.

2010/2011 events managed by the Authority - At 28 September 2012, nine key tasks are complete and three key tasks remain on track to be completed within the proposed timeframes.

2011/2012 events managed by the Authority - At 28 September 2012, key task 12 is now complete and the seven remaining key tasks are on track to be completed within expected timeframes.



- 1 Light green - key task that is progressing satisfactorily
- 2 Dark green - reactivated key task or similar activity as a result of current or emerging events
- Hollow markers - timeframe by which a key task was previously expected to be completed
- Arrows indicate a key task is undertaken on an ongoing basis

2010/2011 events managed by the Authority

Remaining key tasks:	
3	Continue to implement, monitor and review the transport reconstruction plan
10	Review existing Queensland Transport and Roads Investment Program (QTRIP) (capital works plans) to accommodate the NDRRA program
11	Support the development and implementation of both cross-cutting planning and local community and economic recovery and reconstruction plans

2011/2012 events managed by the Authority (shown in dark green)

Remaining reactivated key tasks	
3	Continue to implement, monitor and review the transport reconstruction plan
7	Develop regional reconstruction projects and activities accounting for regional reconstruction priorities and goals.
8	Moderate regional reconstruction projects within the state-wide reconstruction program and other roads and transport infrastructure programs
9	Prepare NDRRA submissions as required
10	Review existing Queensland Transport and Roads Investment Program (QTRIP) (capital works plans) to accommodate the NDRRA program
11	Support the development and implementation of both cross-cutting planning and local community economic and environmental recovery and reconstruction plans
13	Program closure

4.6 Community Liaison and Communication

This line of reconstruction is focused on building stakeholder confidence in the reconstruction by ensuring consistent and regular communication of public information.

Communicating progress

On 24 September 2012, the Authority's e-newsletter - **Reconstruction Update** - was circulated to approximately 900 subscribers.



The newsletter featured council case studies from each Queensland region as well as Transport and Main Roads and environmental recovery case studies.

Interest in reconstruction progress remains strong with an "open" rate of nearly 40% for the newsletter.

Reconstruction Update

The Authority has developed and launched a new online interface for reconstruction case studies that shows the progress being made in each region. Visit www.qldreconstruction.org.au/case-studies.

During September, the Department of Transport and Main Roads continued to keep stakeholders informed of reconstruction works. New and updated project information, including images of reconstruction progress, was loaded on their website at www.tmr.qld.gov.au.

TMR also distributed updates to external stakeholders. One advised motorists and local communities in the Darling Downs of reconstruction-related roadworks underway in their region. Another provided an update on the Statewide critical materials required, including plant and machinery, transport logistics and operators to link the supply chain from end-to-end.

Queensland Government's Traffic and Travel Information (TTI) website www.131940.qld.gov.au was updated with information on works across the State and associated changes to traffic conditions. Information was also made available to road users through community service announcements, VMS, SMS subscription services, A3 posters in service stations and truck stops, and through the local print media via media statements.

Queensland Health distributed Recovery News, a quarterly newsletter developed by the Centre for Trauma, Loss and Disaster Recovery. The Family Bereavement Service also continued to provide telephone and face-to-face counselling and support to individuals across the State who were bereaved as a result of the 2010-11 floods and cyclones.

Engagement activities

Between 1 September and 30 September 2012, Authority staff met with members of council and/or inspected the following areas: Wujal Wujal, Cassowary Coast, Boulia, Cloncurry, Maranoa, Whitsunday, Hinchinbrook and Charleville.

The Authority also took part in numerous meetings in relation to flood plain management and flood mitigation.

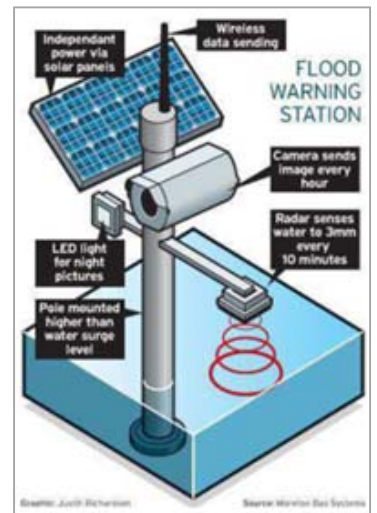
Representatives from the Authority delivered presentations on progress of the reconstruction program at key forums including the Central Region Engineers Conference and the Australian Industry Group.

Chair of the Authority, Major-General Dick Wilson, attended the completion of the Peranga Pioneers' Bridge (formerly the Cockatoo Creek Bridge) 70km north-west of Toowoomba.

Media analysis

There have been a total 319 reconstruction media items from 1-28 September (149 print, 33 television and 137 radio) with the main focus being announcements about the extension of the Authority until June 2014.

Flood mitigation stories, including the development and State-wide implementation of new flood early warning system technology featured prominently.



4.6 Community Liaison and Communication (Continued)

Flood portal

In order to implement the recommendations of the Queensland Floods Commission of Inquiry and provide Queenslanders with better access to Government data, the Authority has launched the Queensland Flood Portal on its website.

The portal will feature an updated version of the existing 'Floodcheck' website.

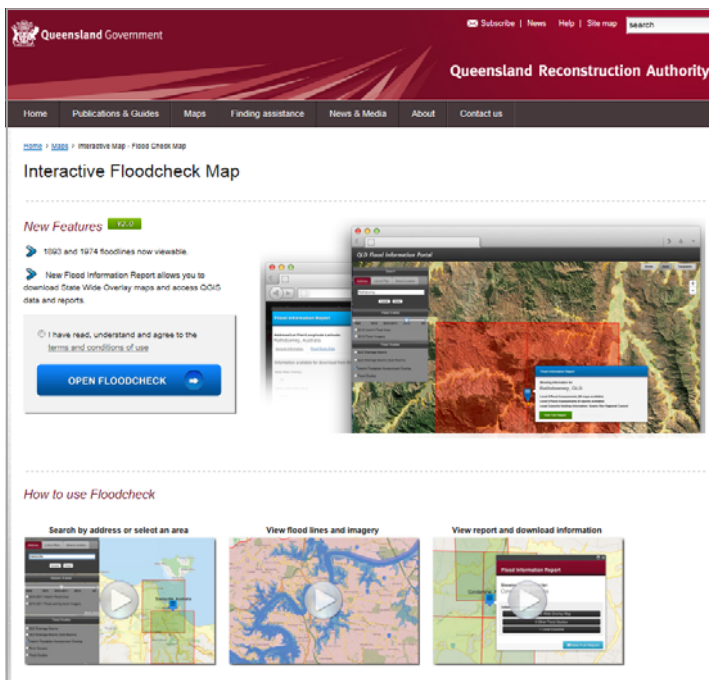
New features include imagery of historic flood events, including the 1893, 1974 and 2011 flood events, the locations of river gauges, and flood simulations for Queensland's flood-prone areas. It also features hundreds of case studies from towns across Queensland.

State-of-the-art simulations include animations showing potential areas of flood inundation based on various flooding events such as a 1 in 10, 1 in 50 and 1 in 100 year events.

The new portal is phase 1 of a two-stage process that will provide a detailed picture of Queensland's proclivity to flood.

Stage 2 will see the Authority publish comprehensive flood hazard maps on its website for up to 100 flood-prone towns by 31 January 2013.

The Queensland Flood Portal can be accessed on the Authority's website - www.qldreconstruction.org.au/flood-check-map.



The Authority's new Floodcheck portal

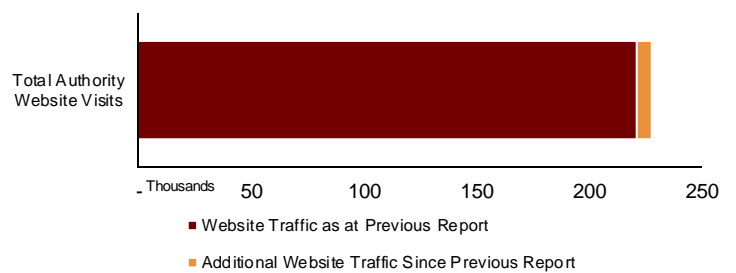
Communications

There are a number of methods available to the public to communicate with the Authority.

The Authority's website provides information to the public and continues to be enhanced with ongoing updates.

At 30 September, total visits to the Authority's website amounted to 228,267 – an increase of 3 per cent since the previous reporting period. *See Figure 4.6.1*

Fig. 4.6.1 Website Traffic

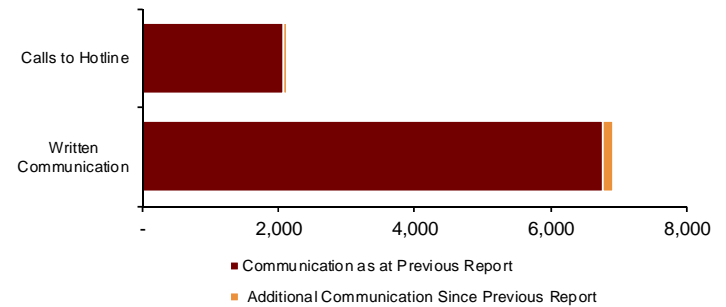


(Source: the Authority at 30 September 2012)

At 30 September, the Authority had received an additional 45 calls to its dedicated hotline and 143 additional pieces of written correspondence were received since the previous report.

See Figure 4.6.2

Fig. 4.6.2 Communication



(Source: the Authority at 30 September 2012)

Community Liaison and Communication Line of Reconstruction Case example *Banana Shire Council's reconstruction well underway*

As a result of the flooding and heavy rains during early January 2011, Broadmere Road in the Taroom area of the Banana Shire experienced three roadway embankment slips due to saturation.

There were collapses all along Robinson Creek and one site resulted in the road subsiding into the creek.

The other two sites were on the verge of collapse. Side tracks were put in so the road could continue to be used.

Council worked with consulting engineers and surveyors to develop a design for the project.

Rock gabion walls are currently being constructed to hold the road in place.

Construction work commenced on the project in August 2012 and should be completed by the end of November 2012.

A total of \$780,745 was approved for these projects and councils envisage that the projects will be delivered on cost.

To date, Banana Shire Council is approximately 75% through its reconstruction program and expect to have all work delivered by June 2013.



Above: Broadmere Road, Taroom was badly damaged by floodwaters in January 2011



Rock gabion walls are currently being constructed to hold the road in place

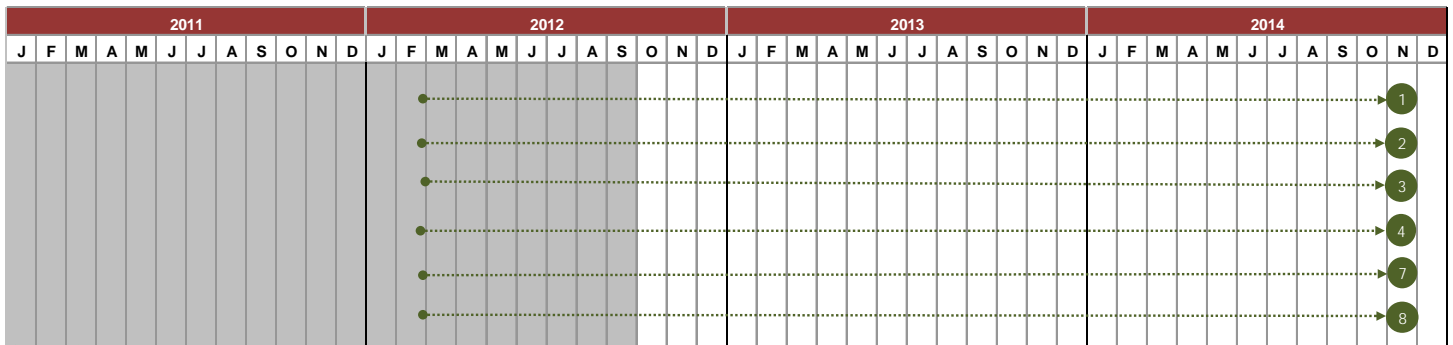
(Source: the Authority 30 September 2012)

Community Liaison and Communication - progress of remaining key tasks against Implementation Plan

The progression of key tasks against the Implementation Plan for the Community Liaison and Communication Line of Reconstruction was updated during the annual review process for Operation Queensland Update 2011-2013.

Markers shown in dark green indicate the combined key tasks for 2011/12 events and key tasks that have been reactivated in response to the current and emerging natural disaster events of 27 January-February 2012.

Combined 2010/2011 and 2011/12 events managed by the Authority - At 30 September 2012, five key tasks are complete and all six remaining tasks are on track to be completed within proposed timeframes.



1 Dark green – combined 2010/11 & 2011/12 key tasks that are progressing satisfactorily
 → Arrows indicate a key task is undertaken on an ongoing basis

Combined 2010/11 and 2011/2012 events managed by the Authority (shown in dark green)

Remaining key tasks:	
1	Reconnecting people and communities connected through the regular sharing of significant information, including cross-department coordination and local councils
2	Provide strategic communications and information advice to the Queensland Government and the Queensland Reconstruction Authority
3	Identify developing sentiments within communities and provide advice on the most appropriate reinforcement and response measures
4	Coordinate community liaison and communication activities
7	Engage media and communities engaged as key milestones are achieved
8	Monitor and report measures of progress and effectiveness



Section five: State of the State - Disaster Assistance

The following section provides an overview of the status of the disaster assistance associated with the 2010/2011 events and the current 2011/2012 events managed by the Authority.

5.1 Disaster Assistance by event period - 2010/2011

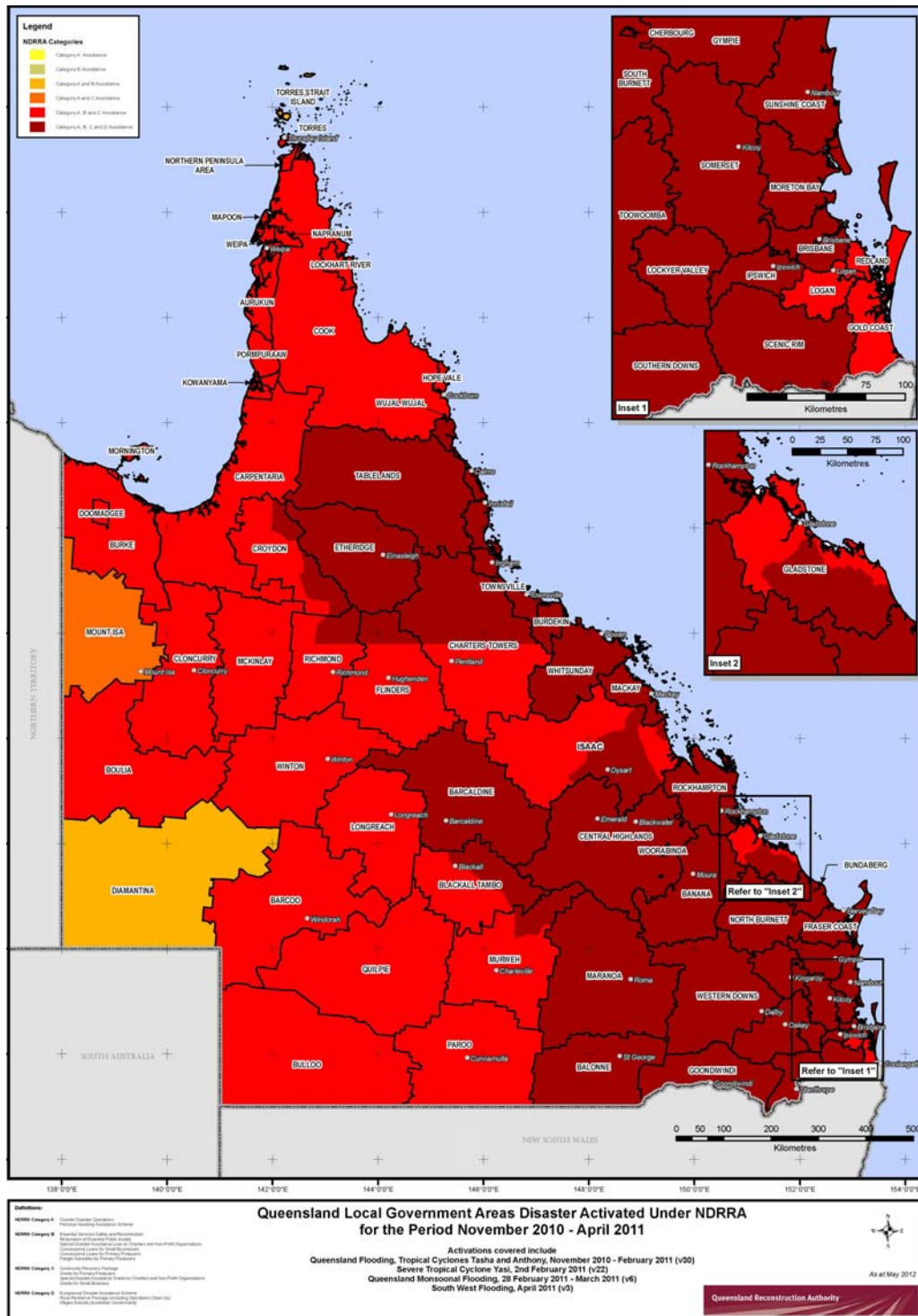
The following section provides a summary of the disaster assistance in relation to the July 2010 to June 2011 period Queensland natural disaster events. The events occurring in this period are listed in the Timeline of Activations (p.3) of this report.

The values represent all applications approved by the Authority and grants/loans assistance paid under the Queensland Disaster Assistance Framework described in **Table 5.3**.

Key Developments since last report:

The Authority has received 1,865 applications with a value of \$7.98 billion. This is an increase of 34 applications, worth approximately \$201.5 million since the last report. A total of \$5.8 billion has been processed, an increase of \$118 million.

Map 1 - LGAs disaster activated under NDRRA for 2010-2011 events managed by the Authority



5.2 Disaster Assistance by event period - 2011/2012

The following section provides a summary of the disaster assistance in relation to the July 2011 to June 2012 period Queensland natural disaster events. The events occurring in this period are listed in the Timeline of Activations (p.3) of this report.

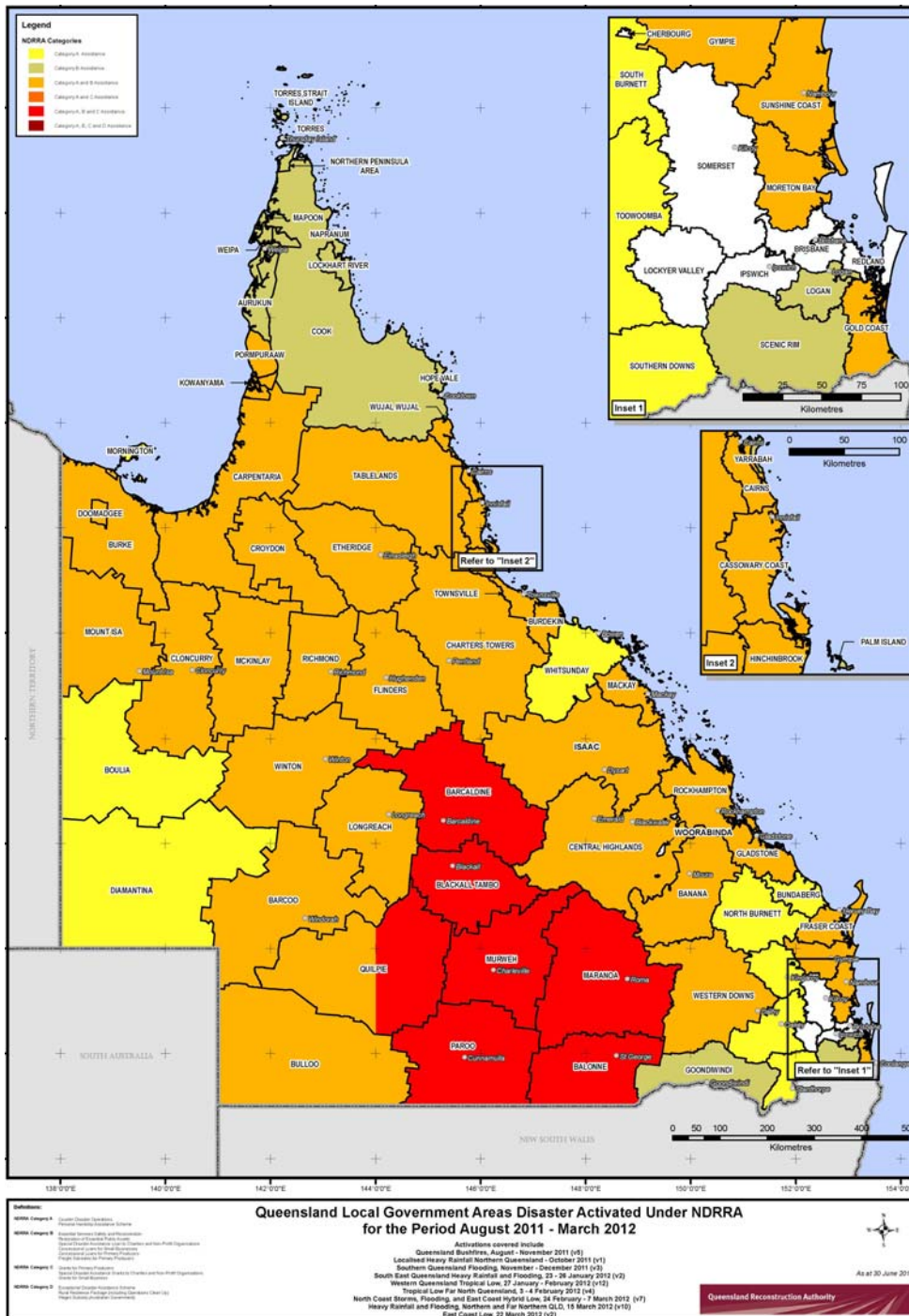
The values represent all applications approved by the Authority and grants/loans assistance paid under the Queensland Disaster Assistance Framework described in **Table 5.3**.

It is anticipated that the Authority will receive applications for restoration/CDO/emergent works and grants/ loans assistance for these events in the next few months. The Authority is continuing to revise the damage estimate for the 2011/2012 events and this will be included in future reports.

Key Developments since last report:

At 2 October 2012, the Authority had received 172 applications with a value of \$484 million. Total funding acquitted for individuals, small business, primary producers and charities and non-profit organisations amounts to \$16.89 million.

Map 2 - LGAs disaster activated under NDRRA for 2011-2012 events managed by the Authority



5.3 Queensland Disaster Assistance Framework

The available Queensland Disaster Assistance schemes are separated between NDRRA (jointly funded by the Commonwealth and State governments) and Non-NDRRA funding allocation. For reporting purposes, the schemes are divided into the sections outlined below.

Table 5.3 - Grant Assistance Available for Queensland Disasters

	NDRRA	Non-NDRRA
Individuals and families	Personal Hardship and Assistance Scheme (PHAS) Emergent Assistance Grants Essential Household Contents Grants Structural Assistance Grants Essential Services and Safety Reconnection (ESSR) Safety Inspections Repairs	Premier's Disaster Relief Appeal Australian Government Disaster Recovery Payments
Local Governments, State Departments and Agencies	Counter Disaster Operations Restoration of Essential Public Assets Queensland Local Council Package	
Small Businesses, Primary Producers and Charities and Non-Profit Groups	Concessional Loans Grants Freight Subsidies for Primary Producers Rural Resilience Fund Operation Clean-up Special Disaster Assistance Loans to Charities and Non-Profit Organisations Exceptional Concessional Loans	Disaster Income Recovery Subsidies Cyclone Yasi Wage Assistance Sport Flood Fight Back Scheme Tourism Industry Support Package Queensland Natural Disaster Jobs and Skills Package Racetrack Recovery Assistance Flood Recovery Program QLD Flood and Cyclone Legal Help



Section six: State of the State - Planning and Authority Projects

The Queensland Reconstruction Authority is legislatively empowered to perform accelerated planning, development and decision-making activities to expedite reconstruction and recovery efforts. This section provides an overview of these activities and an update on how they have been undertaken in the past month.

6.1 Planning

Floodplain Management Project

To assist Queensland's Councils, the Queensland Reconstruction Authority (the Authority) in collaboration with the former Department of Environment and Resource Management, developed a toolkit **Planning for stronger, more resilient floodplains**. The toolkit includes:-

- **Part 1 Guideline** – *Interim measures to support floodplain management in existing planning schemes*
- **Part 2 Guideline** – *Measures to support floodplain management in future planning schemes*
- **Level 1 - Statewide Floodplain Mapping**

Together, the Statewide mapping and the two-part guideline help Councils introduce consistent and specific planning controls to manage flood risks, a recommendation identified and supported in the Floods Commission of Inquiry's Final Report (QFCI).

Queensland Floods Commission of Inquiry

On 16 March 2012, the QFCI handed down its final report. The final report included 177 recommendations across a number of areas including land use planning, building controls, emergency management, mining and insurance.

On 7 June 2012, the Queensland Government tabled its detailed response to the Queensland Floods Commission of Inquiry (QFCI) recommendations. The Authority has been nominated as lead agency for delivery of a number of these recommendations specifically those relating to Chapter 2: Floodplain Management.

Queensland Flood Mapping Program

As part of the Queensland Government's response to the QFCI, the Authority has developed the Queensland Flood Mapping Program (QFMP). The QFMP will implement a number of specific recommendations including 2.4, 2.5, 2.6, 2.11, 2.16 and 2.19. These recommendations relate to flood information and investigations; collation and repository of flood data; and the display of flood information and mapping.

As of 1 October 2012, the Authority had implemented recommendations 2.11 and 2.16 of the QFCI. Recommendation 2.11 stated that the *Queensland Government and Commonwealth should ensure there is a maintenance of a repository of data of the type used in flood studies which Councils, QG and Commonwealth can access*. This recommendation was implemented through the development of the Queensland Flood Information Database. A custom built access database that provides a central repository of flood data.

To date the Authority has loaded over 100 flood studies into the database. Access to around 1200 additional studies is currently in progress.

Queensland Flood Mapping Program (Cont'd)

Recommendation 2.16 – *Councils and QG should display on their websites all flood mapping they have commissioned or adopted*. This recommendation has been delivered through the release of the updated Floodcheck website (www.qldra.org.au/floodcheck).

New features include:-

- Imagery of historic events including floodlines from 1893, 1974 and 2011.
- Flood study information drawn from the Queensland database that displays the location and extent of flood studies and summaries the content of the flood study.
- Location of River Gauges.

As more information becomes available and as further Level 2 flood investigations are completed more website features will be added.

In addition to the collation, storage and display of information, the QFMP is delivering with the support of industry, flood investigations for up to 100 flood prone towns by the end of January 2013. This activity is supporting QFCI recommendations 2.4, 2.5 and 2.6.

The Authority has completed 22 towns with 29 towns currently out with industry for completion. These investigations will result in flood hazard maps being produced for a range of flood events (ie. 10%, 1%, 2%). Importantly, these maps will allow a better understanding of what further more detailed investigations may need to be undertaken as well as informing land use planning strategies that contribute to improved resilience to flooding.

Flood Mitigation

The Authority is actively working with Central Highlands, Balonne and Maranoa Councils providing advice on flood mitigation approaches. The Authority will be supporting these Councils to understand potential mitigation options including land use responses and structural mitigation works, prioritising a works schedule and identify appropriate funding sources including the South West Flood Mitigation Fund and the Royalties for the Regions – Flood Security Scheme.

The Authority is an advice agency supporting Department of State Development Infrastructure and Planning, Department of Local Government and the Department of Community Safety.

This advice is provided in support of the various funding programs that these agencies administer.

Land Use Planning and Building Codes Taskforce

The Authority recently led a significant body of work on behalf of the National Land Use Planning and Building Codes Taskforce (Taskforce), a working group of the Standing Council on Police and Emergency Management (SCPEM) reporting to the Council of Australian Governments (COAG).

The project supports the *National Strategy for Disaster Resilience* including a nationwide review of land use planning and building codes as they relate to natural disasters.

Four reports have now been delivered including a Vision Statement, Current State Review, Gap Analysis and a Roadmap. The Roadmap outlines the actions, including the requirement for State based Capability and Investment Plan's. The reports were endorsed by the National Emergency Management Committee on Friday 25 May 2012 and noted by SCPEM on Friday 29 June 2012.

The Taskforce has endorsed the National Capability and Investment Plan template developed by the Authority for use by all jurisdictions. The Capability and Investment Plan will underpin the development of a detailed Implementation Strategy in each State and Territory. The Queensland Capability and Investment Plan are being progressed utilising the template delivering clear direction on the actions that Queensland needs to prioritise.

Recovery and Reconstruction Projects

The Authority has been working with a number of Councils and organisations to support specific recovery projects and facilitate state agency input to streamline the approvals process.

Cardwell Esplanade and Marine Infrastructure Recovery Project

The Authority is an active member of the Cardwell Esplanade and Marine Infrastructure Recovery Project Steering Committee. On 26 June 2012, the Honourable Jeff Seeney MP, Deputy Premier and Minister for State Development, Infrastructure and Planning announced the \$32.47 million contract to reconstruct Cardwell had been awarded to See Civil Pty Ltd. Works on this project have now commenced and are expected to be completed by June 2013.

Works have also commenced on Dunk Island to restore Council assets within the camping ground. All works will be completed by the end of October 2012.

Tenders for design and construction of the Dunk Island and Clump Point jetties have been awarded to Civil Plus Pty Ltd. Works to restore the Dunk Island jetty will commence in early November 2012, Clump Point Jetty replacement will commence in January 2013 will all works expected to be completed by June 2013.

Recovery Projects

The Authority continues to provide assistance to a number of Councils supporting the streamlining of development applications associated with recovery and reconstruction projects.

A number of exemptions supporting the streamlining of recovery and reconstruction projects were due to expire in early 2013. The Authority is actively working with the agencies to ensure that the exemptions are extended and continue to streamline delivery.

The Authority is actively supporting a number of Local Governments including Brisbane City Council with a number of reconstruction projects and will also support the approvals process for the RiverWalk and Ferry Terminals.

6.2 Damage Assessment and Reconstruction Monitoring - DARMsys™

A key success factor in recovery and rebuilding from natural disasters is undertaking structured and planned assessments of damage and commencing reconstruction as early as possible.

The devastating weather events in 2011 underlined the importance of gathering early, comprehensive and accurate damage assessment information on the extent of damage as soon as safely possible after the event.

The aim of DARMsys™ is to ensure the Queensland Government has the capability to undertake timely and accurate damage assessments and monitor the reconstruction effort in a way that enables the State to respond and recover as soon as possible from any future disaster event.

Learn more at www.qldra.org.au/about/darmsys.

Assessments commenced in July 2011 and were undertaken by the Authority and Building Services Authority staff.

A total of 1,400 residential properties were damaged over the 2012 event period, consisting of:

- 832 - Western Queensland Floods
- 145 - Townsville Storm Event
- 108 - Sunshine Coast February Event
- 315 - Sunshine Coast March Event

(Source: the Authority June 2012)

Upcoming Reconstruction Monitoring:

Western floods

- 22-24 October 2012

Western Floods Region Flooding Update

(February 2012 event)

Data from the July 2012 Western Floods region audit indicates that:

- Of the 1,699 buildings assessed in the Western Floods region, 90.2% (1,533) are no longer damaged, have been repaired, or have work commenced. This is up from 69% (1,172) in the March 2012 audit.
- The Authority has planned a reconstruction audit for this region to be conducted on 22-24 October 2012 targeting 358 properties (includes 96 in Mitchell and 224 in Roma).

Sunshine Coast Region Flooding Update

(February & March 2012 events)

The Authority completed reconstruction audits for this on 29 August 2012.

Data from the August 2012 Sunshine Coast Region audit indicates that:

- Of the 2,197 buildings assessed in the Sunshine Coast region 99.1% (2,177) are no longer damaged, are repaired, or have had work commenced.
- 44 properties remain damaged with 24 having work underway.
- The Authority has no more planned reconstruction audits for the Sunshine Coast region.

Townsville Storm Update

(March 2012 event)

The Authority completed planned reconstruction audits in the Townsville Storm region on 10 September 2012.

Data from the September 2012 Townsville Storm region audit indicates that:

- Of the 247 buildings assessed for the Townsville Storm, 95.1% (235) are no longer damaged, repaired, or have work commenced. This is up from 207 (83.8%) observed in the June 2012 audit.
- 24 properties remain damaged with 12 having work underway.
- The Authority has no more planned reconstruction audits for the Townsville Storm region.

(Source: the Authority 27 September 2012)

Appendix A: Local Government Areas by Region

